

DOCUMENT AND DRAWING 提出図書		No. of Copies	CLIENT: 顧客:		
	FOR CONFERENCE 協議用図		SASEBO HEAVY INDUSTRIES CO.,LTD.		
	FOR SPECIFICATION 納入仕様書	7			
	FOR APPROVAL 御承認用図		SHIP No.: 船番: 761 / 762		
	FOR CONSTRUCTION 工事用図	5	SERVICE: 用途: No.1 No.2 FUEL OIL PURIFIER		Q'TY 2 set(s)
○	FOR COMPLETION 完成図	4			set(s)
			MODEL No.: 型番: SJ50GH		
			NOTICE: Refer to the following publication before designing and setting out the installation work aboard the ship. MITSUBISHI SELFJECTOR OUTLINE OF FITTING-OUT ABOARD		
			注意: 機装設計及び艦装工事に際しては、弊社発行の 「三菱油清浄機船内艦装工事要領」 を御参照願います。		
			MACHINERY ENGINEERING DEPARTMENT MITSUBISHI KAKOKI KAISHA, LTD. 三菱化工機株式会社 産業機械技術部 SJ設計G		
			Approved 承認: <i>S. Kimura</i>		
			Checked 確認: <i>S. Kita</i>		
			Made 作成: <i>H. Sasaki</i>		
			Date 日付: SEP-24-'08		Scale 尺度: NONE
			Our order No. : 弊社工番: A1001140-1000 / A1001141-1000		
			Revision	Date	Appr.

SUPPLY LIST
供給品リスト

Our order No.: A1001140-1000/A1001141-1000
弊 社 工 番:

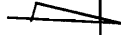
*	No.	NAME 名 称	Q'TY数量	REMARKS 備 考
○	1	Oil purifier 油 清 浄 機	2	Leakage monitor func., Water detector func. Discharge detector function.
	2	Oil purifier starter 油 清 浄 機 始 動 器		
○	3	Automatic control device 自 動 化 装 置	2	Control panel and valves Type : GSH-1
	4	Alarm device 警 報 装 置		Alarm panel and valves Type :
	5	Water detector 水 分 検 知 器		With electrostatic capacity type water detector 静電容量式水分検知器付き
	6	Temperature switch 温 度 ス イ ッ チ		
	7	Separated feed pump 別 置 ポ ン プ		With separated feed pump starter 別置ポンプ始動器付き
	8	Oil heater (Steam type) 蒸 気 式 油 加 熱 器		With temperatue regulator 温調弁付き Steam trap valve unit スチームトラップユニット
	9	Electric oil heater 電 気 式 油 加 熱 器		With heater control box 加熱器制御ボックス付き
	10	Oil strainer 油 こ し 器		
○	11	Butterfly valve バ タ フ ラ イ 弁	2	
	12	Work table 掃 除 台		
○	13	Tool 工 具	1	
○	14	Spare parts 予 備 品	2	
	15			

NOTE :

The items in a circle in the first column (*) show items to be supplied by MITSUBISHI KAKOKI KAISHA, LTD.

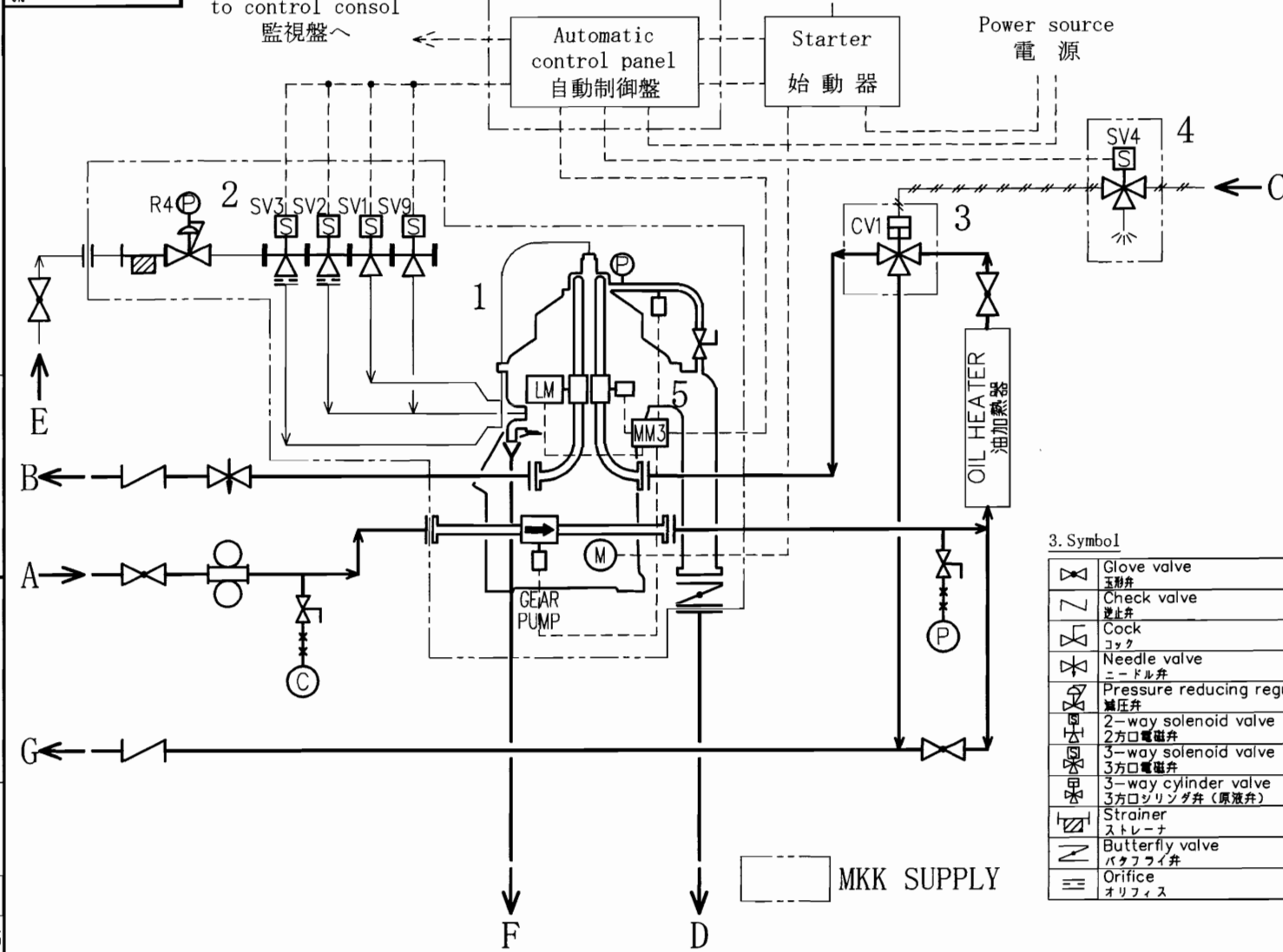
注 記:

第一欄(*)に○印を付してあるものが、弊社供給品目です。

USE :		SPECIFICATIONS				
用途 :		仕様				
TYPE/MODEL 型番	MITSUBISHI SELFJECTOR 三菱セルフジェクタ			MODEL : SJ50GH		
THROUGHPUT CAPACITIES (L/Hr) 容量表	Actual capacity	Marine diesel oil A 重油		14 mm ² /s at 40°C 11600		
		Heavy fuel oil C 重油		180 mm ² /s at 50°C 6900		
	容 量 表	容 量 表			380 mm ² /s at 50°C 4900	
					500 mm ² /s at 50°C 3900	
					600 mm ² /s at 50°C 3450	
					700 mm ² /s at 50°C 3150	
Lubricating oil 潤滑油		Cross H. Trunk P.	Det. Det.	100/150 mm ² /s at 40°C 5450		
100/150 mm ² /s at 40°C 4550						
PUMP ポンプ (L/Hr)	Feed pump (Gear pump) 吸込みポンプ	(for FO.) GP50GA		5700 L/h Suction head -4 m		
	Discharge pump 吐出ポンプ	(Centripetal pump)		Delivery head 20 m		
BOWL 回転体	No of Revolution 回転数 7800 min ⁻¹		Bowl mass 回転体質量 110 kg			
MOTOR 電動機	AC 440V, 60Hz,		Output 出力 11 kW, 4 poles			
ELECTRIC SOURCE 供給電源	Power source 動力電源		AC 440V, 60Hz, 3 phases			
Control source 制御電源		AC 110V, 60Hz, 1 phase				
CABLE ENTRANCE/S 電線引込方式	Detector & Solenoid valves : Gland (JIS F8801) 検知器 & 電磁弁 : グランド サイズ			Refer each drawing. 各図面を参照願います。		
Panel : パネル :		Coaming コーミング				
CLASS OF SHIP 船級	ABS		TOTAL MASS 総質量	(With motor 電動機含む) 590 kg		
NAME PLATE 銘板	For use : 用途銘板 : English 英文		For Notice : 注意銘板 : English 英文			
FINISH COLOR 塗装色	Munsell. No. : マンセル No. : 7.5BG7/2					
UTILITY ユーティリティ	Flange connection フランジ接続	Oil 油 JIS 5 K		Water 水 JIS 5 K		
		Sludge outlet スラッジ出口 JIS 5 K				
	Pressure 圧力	Water 水 0.35~0.5 MPa {3.5~5.0kg/cm ² }	Air 空気 0.5~0.9 MPa {5.0~9.0kg/cm ² }	Steam 蒸気		
REMARKS 備考	Pressure gauge is SI unit. A1001140-1000/A1001141-1000			Doc. No. :		

This drawing and the design it covers are the property of MITSUBISHI KAKOKI KAISHA, LTD. They are hereby licensed and the licensee's express agreement that they will not be reproduced, copied, loaned, exhibited, or used except in the limited way and purpose as permitted by any written consent given by the licensor to the licensee.

1st 3rd ANGLE SYSTEM
DWG. NO. 351346



1. Equipment

1	Selfjector 油清浄機
2	Water valve (For sealing water, opening and closing bowl) 作動水電磁弁 (封水用、開弁用、閉弁用)
3	Feed valve 原液弁
4	3-way solenoid valve 3方口電磁弁
5	Multi-Monitor (MM3type) マルチモニタ (MM3)

2. Connection

A	Dirty oil inlet (F.O.:from Settling tank, L.O.:from Sump tank) 原液入口
B	Purified oil outlet (F.O.:to Service tank, L.O.:to Sump tank) 清浄液出口
C	Compressed air inlet (0.5~0.9MPa) 圧縮空気入口
D	Sludge and water outlet スラッジ、水出口
E	Water inlet (0.35~0.5MPa) 清水 (高圧水) 入口
F	Operating water drain 作動水ドレン
G	Circulation (F.O.:to Settling tank, L.O.:to Sump tank) 循環出口

3. Symbol

	Glove valve 玉形弁		Duplex type strainer 複式ストレーナ
	Check valve 止弁		Pressure gauge 圧力計
	Cock ジョック		Compound gauge 連成計
	Needle valve ニードル弁		Motor 電動機
	Pressure reducing regulator 減圧弁		Oil line 油配管
	2-way solenoid valve 2方口電磁弁		Sludge and drain line スラッジ、ドレン配管
	3-way solenoid valve 3方口電磁弁		Water line 水配管
	3-way cylinder valve 3方口シリンダ弁 (原液弁)		Capillary line 細管
	Strainer ストレーナ		Air line 空気配管
	Butterfly valve バタフライ弁		Electric wiring 電気配線
	Orifice オリフィス		Sensor センサー

MF AP A B C D E F G H J K
RL A B C D E F G H J K

NO.	DESCRIPTION	DATE	DRAWN	CHKD.	APPR.
		SEP-28-'07	A.Nakamura		
	Review revision		KPEC	K.Usui	S.Kimura
	Review revision				

REVISIONS

MITSUBISHI KAKOKI KAISHA, LTD.
TOKYO JAPAN

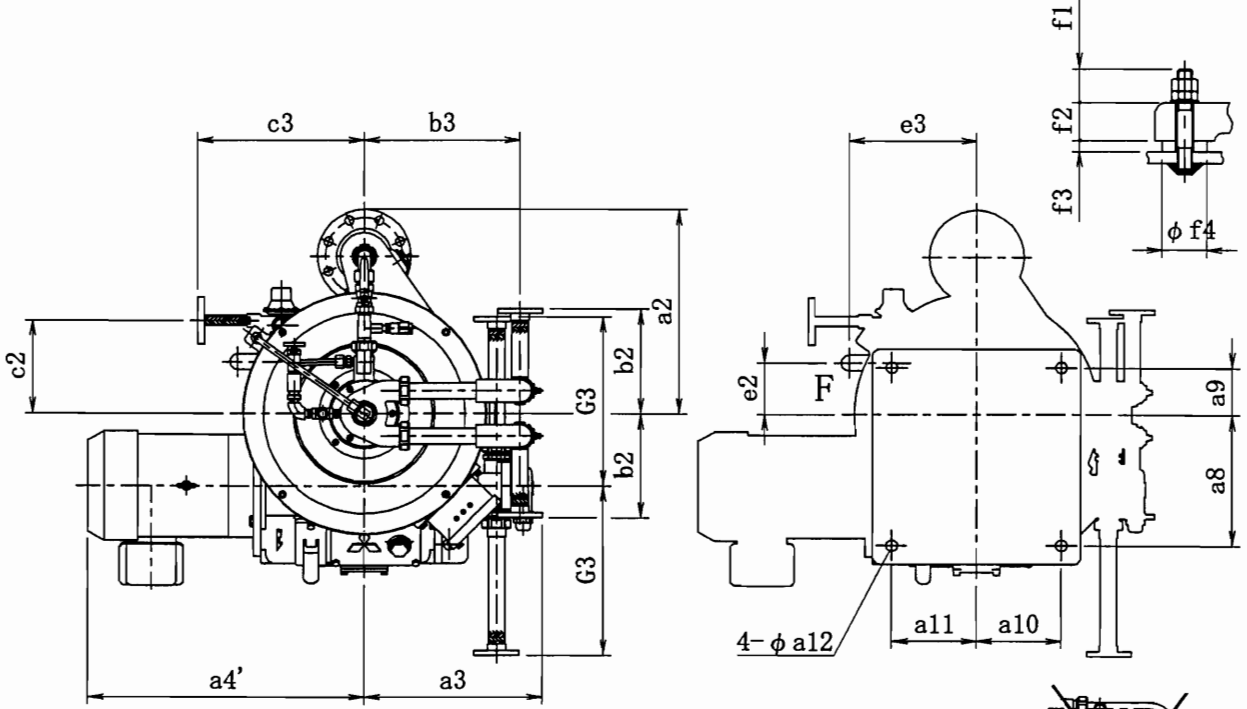
DUPLICATE ISSUED TO

TITLE		FLOW DIAGRAM SJ-G (GSH)	
SCALE	NONE	NO.REQD.	
DRAWN BY & DATE	KPEC	MAY-23-'02	JOB NO.
CHKD. BY & DATE			DOC.NO.
APPR. BY & DATE	CHIEF DESR.		DWG.NO.
	PROJ. ENGR.		351346S
			REV. B

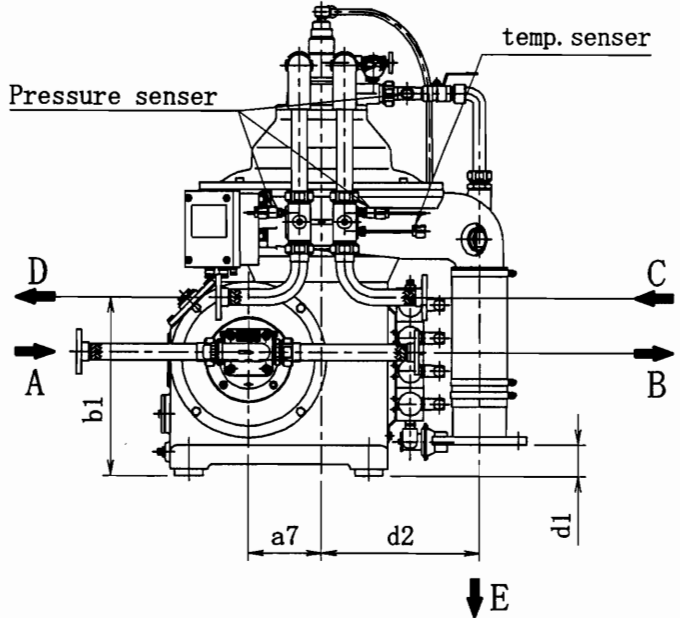
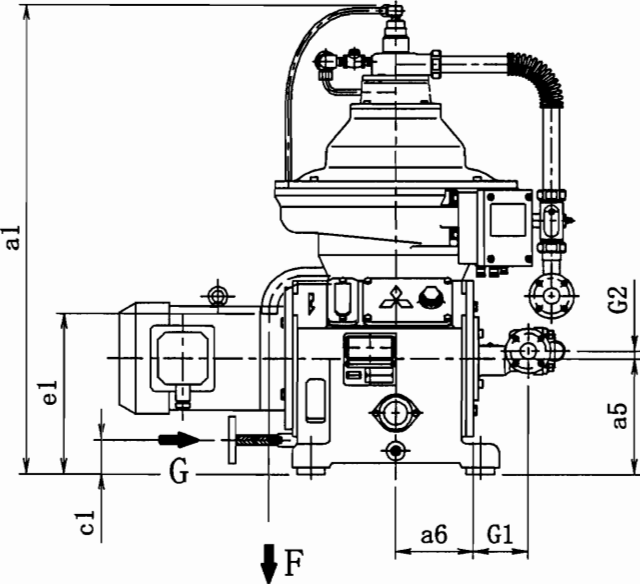
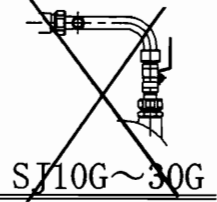


This drawing and the design it covers are the property of MITSUBISHI KAKOKI KAISHA, LTD. They are hereby loaned and on the borrower's express agreement that they will not be reproduced, loaned, exhibited, nor used except in the limited way and private use permitted by any written consent given by the lender to the borrower.

GENERAL THREE VIEW



※This size is designed for our standard motor.



Piping Connection	Bore		
	10GH~30GH	50GH~70GH	100GH~150GH
A Gear pump inlet	SEE *ASEE	*ASEE	*A
B Gear pump outlet	SEE *BSEE	*BSEE	*B
C Dirty oil inlet	25 A	40 A	50 A
D Purified oil outlet	25 A	40 A	50 A
E Sludge & Water outlet	100 A	100 A	150A
F Operating water outlet	25 A	25 A	40 A
G Operating water inlet	15 A	15 A	15 A

Dimensions & Bore					
Pump No.	G1	G2	G3	*A	*B
GP10G	112.5	16.2	361	25 A	25 A
GP20G	121	19	366	25 A	25 A
GP30G	130	19	366	25 A	25 A
GP50G	126.5	28.5	402	40 A	40 A
GP70G	135	28.5	402	40 A	40 A
GP100G	150	28.5	402	50 A	50 A



MITSUBISHI KAKOKI KAISHA, LTD.

DWG. NO.

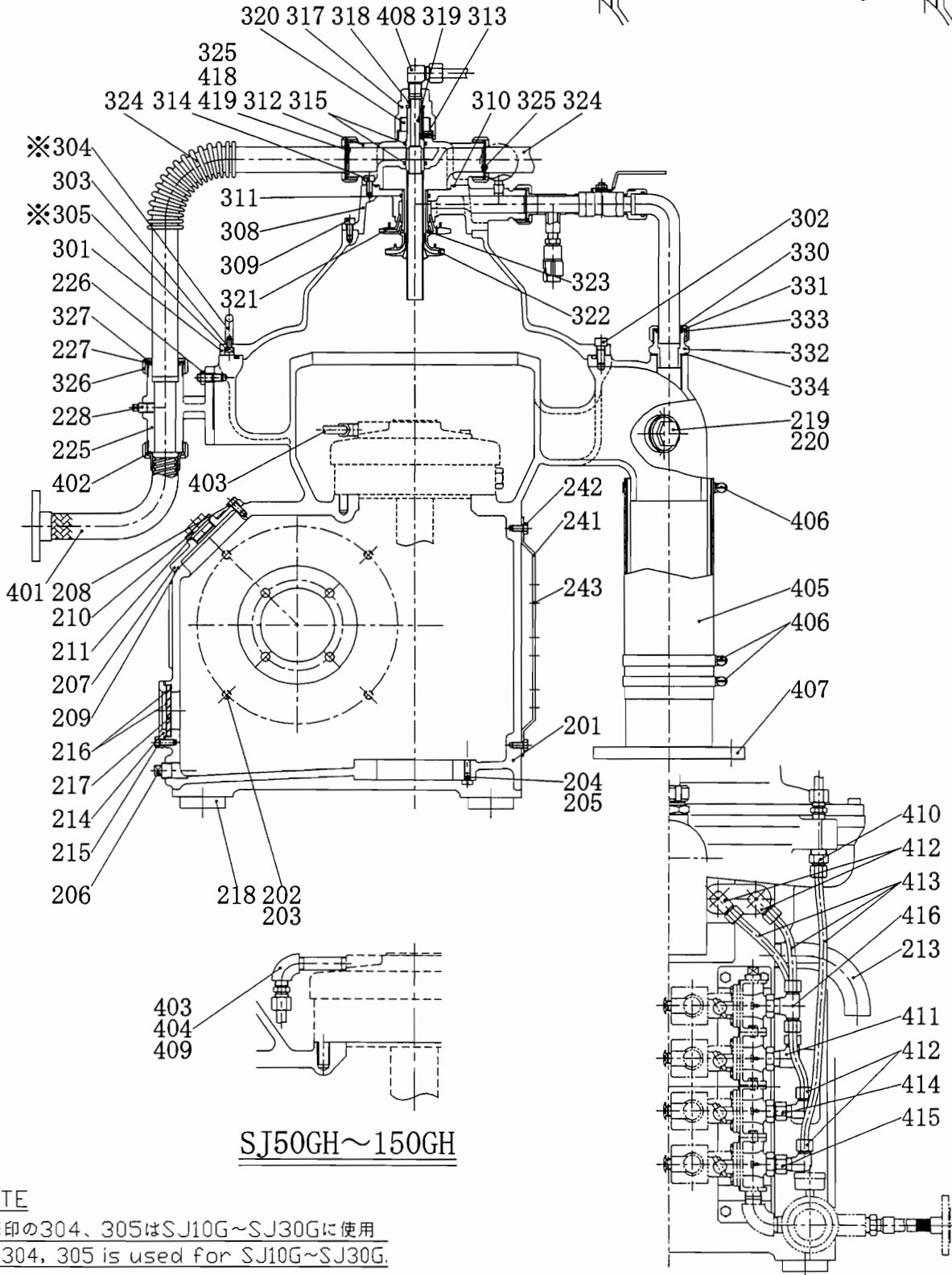
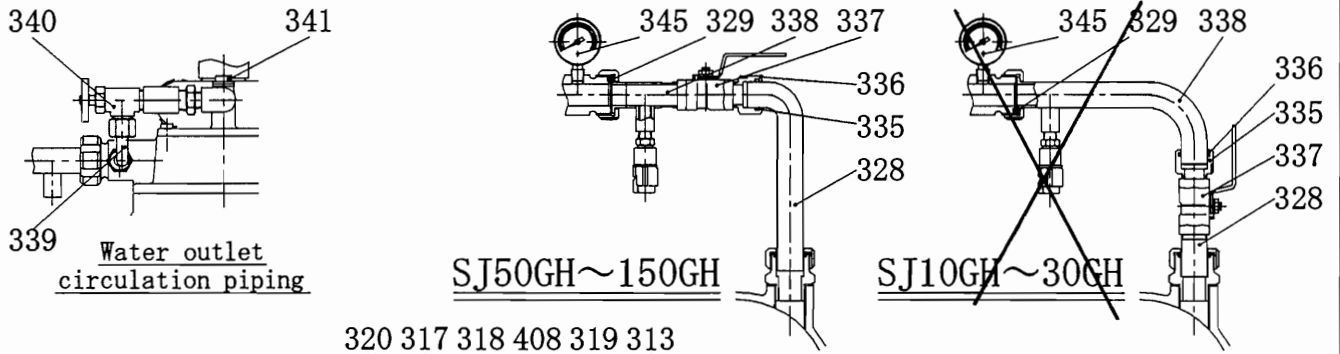
206429A

DIMENSION OF SJ-G

	SJ10G,GH	SJ20G,GH	SJ30G,GH	SJ50G,GH	SJ60G,GH	SJ70G,GH	SJ100G,GH	SJ120G,GH	SJ150G,GH
a 1	996	1002	1027	1216	1216	1236	1407	1407	1444
a 1'	1234	1240	1265	1522	1522	1541	1712	1712	1749
a 2	435	435	435	500	500	500	623	623	643
a 3	378	378	393	480	480	480	565	565	590
a 4	508	505	505	688	755	755	880	880	880
a 4'	595	633	633	755	755	755	907	907	880
a 5	245	245	245	315	315	315	330	330	330
a 6	165	165	165	200	200	200	220	220	220
a 7	155	155	155	160	160	160	160	160	165
a 8	280	280	280	300	300	300	290	290	315
a 9	100	100	100	135	135	135	150	150	150
a 10	180	180	180	210	210	210	240	240	240
a 11	180	180	180	210	210	210	240	240	240
a 12	24	24	24	24	24	24	28	28	28
b 1	378	378	378	449	449	449	469	469	469
b 2	253	253	253	373	373	373	490	490	490
b 3	330	330	345	420	420	420	500	500	525
c 1	75	75	75	75	75	75	100	100	100
c 2	198	198	198	233	233	233	258	258	258
c 3	526	526	526	561	561	561	571	571	571
d 1	67	67	67	145	145	145	80	80	80
d 2	335	335	335	400	400	400	490	490	510
e 1	340	340	340	430	430	430	445	445	445
e 2	110	110	110	145	145	145	155	155	155
e 3	270	270	270	300	300	300	380	380	380
f 1	44	44	44	44	44	44	52	52	52
f 2	50	50	50	55	55	55	60	60	60
f 3	15	15	15	15	15	15	20	20	20
f 4	60	60	60	60	60	60	80	80	80

SEE DWG No.	With Gear pump				Without Gear pump (NP)			
	GAP,MAN	GBC	GSH	GSH(W)	GAP,MAN	GBC	GSH	GSH(W)
SJ10G~SJ150G	206750A	206412A	<u>206429A</u>	206895A	206893	206892 206897	206894	206896

FRAME & COVER ASSEMBLY



NOTE

- 1. *印の304、305はSJ10G~SJ30Gに使用
- *304、305 is used for SJ10G~SJ30G.



MITSUBISHI KAKOKI KAISHA, LTD.

DWG. NO.

206353A

MAR. 15. 2006 Date APR. 28. 2000 DRAWN R. SAITO DESIGNED K. Uchi CHECKED S. Kawai MODEL GSH SJ10GH~SJ150GH
 a. Nakamura
 R. Saito
 K. Uchi
 S. Kawai

This drawing and the design it covers are the property of MITSUBISHI KAKOKI KAISHA, LTD. They are hereby loaned and on the borrower's express agreement that they will not be reproduced, loaned, exhibited, nor used except in the limited way

Parts List

DWG. No. 206353A

Symbol	Parts Name		Material	Q'ty	Parts No
201	フレーム	frame	cast iron	1	032587001
202	六角ボルト	bolt	structural steel	4	F1016045C
203	ばね座金	spring washer	carbon steel wire	4	H1016D1
204	すりわり付平小ねじ	set screw	copper-alloy	4	E100810I3
205	シートパッキン	gasket	fiber	4	L01400805
206	プラグ	plug	cast iron	1	NA0015C1
207	ギヤカバ	gear cover	cast iron	1	205545001
208	六角ボルト	bolt	structural steel	4	F1008020C
209	シートパッキン	gasket	fiber	1	455820001
210	プラグ	plug	carbon steel	1	453714001
211	Oリング	O ring	NBR	1	A10032A
213	ドレンパイプ	drain pipe	carbon steel pipe	1	456331001
214	油面計枠	oil gauge retainer	cast iron	1	450538001
215	六角ボルト	bolt	structural steel	2	F1008016C
216	シートパッキン	gasket	fiber	2	L06805010
217	視窓ガラス	sight glass	glass	1	403809001
218	フレームゴム座	rubber plate	NBR	4	420695001
219	プラグ	plug	carbon steel	1	453713001
220	Oリング	O ring	NBR	1	A10032A
225	ブラケット	bracket	cast iron	1	206547001
226	六角ボルト	bolt	structural steel	4	F1010025C
227	Oリング	O ring	NBR	2	A10048A
228	プラグ	plug	cast iron	2	NA0008C1
241	電磁弁取付座	base plate	structural steel	1	350205001
242	六角ボルト	bolt	stainless steel	4	F1008012B
243	六角ボルト	bolt	stainless steel	6	F1005010B
301	スラッジカバ	sludge cover	aluminium alloy casting	1	032461001
302	六角穴付きボルト	socket cap screw	chromium molybdenum steel	4	F3010025G
303	Oリング	O ring	NBR	1	A20625A
308	下部フード	lower hood	cast iron	1	206255001
309	六角穴付きボルト	socket cap screw	chromium molybdenum steel	4	F3008020G
310	Oリング	O ring	NBR	1	A20120A
311	Oリング	O ring	NBR	1	A20045A
312	上部フード	upper hood	cast iron	1	206254001
313	六角穴付き止めねじ	socket set screw	chromium molybdenum steel	1	E400612G5
314	六角穴付きボルト	socket cap screw	chromium molybdenum steel	3	F3008020G
315	Oリング	O ring	NBR	2	A10032A
317	カバーナット	cover nut	structural steel	1	316121001
318	Oリング	O ring	NBR	1	A10015A
319	液入口管	inlet pipe	stainless steel	1	201064103
320	六角ナット	nut	carbon steel	1	G1027A110
321	重液インペラ	impeller (2)	bronze casting	1	207215001
322	軽液インペラ	impeller (1)	bronze casting	1	205621001
323	Oリング	O ring	NBR	1	A10044A
324	液接続管	connecting pipe (2)	stainless steel	2	337640102
325	シートパッキン	gasket	fiber	2	L06004215
326	ユニオンナット	union nut	cast iron	2	409815001
327	Oリング押え	O ring retainer	structural steel	2	450640001
328	重液接続管	connecting tube (2)	stainless steel	1	350649102
329	シートパッキン	gasket	fiber	1	L03802815

Symbol	Parts Name		Material	Q'ty	Parts No
330	ユニオンナット	union nut	cast iron	1	410688001
331	Oリング押え	O ring retainer	carbon steel	1	456030001
332	継手	joint	structural steel	1	456029001
333	Oリング	O ring	NBR	1	A10028A
334	シートパッキン	gasket	fiber	1	L05003815
335	Oリング	O ring	NBR	1	A10026A
336	接手(1)	joint(1)	stainless steel	1	456430001
337	ボールバルブ	ball valve	copper-alloy	1	P3020DA
338	接手(2)	joint(2)	stainless steel	1	351208104
339	ハーフユニオン	half union	copper-alloy	1	N9001413
339	銅管	copper tube	copper-alloy	1	206256001
340	ニードルバルブ	needle valve	copper-alloy	1	P4014DA
341	逆止弁	check valve	bronze casting	1	P2015DA
345	圧力計	pressure gauge	stainless steel	1	M2106004
401	液接続フレキ管	connecting tube (1)	stainless steel	2	319989ABS
402	シートパッキン	gasket	fiber	2	L06105115
403	エルボコネクタ	elbow connector	copper-alloy	2	N00012I1
403	テフロンチューブ	teflon tube	teflon	2	NF0012L0
403	おねじコネクタ	male connector	copper-alloy	2	ND0012I1
404	ロングニップル	nipple	stainless steel	2	N4D010H1
405	スラッジ接続管	sludge pipe	rubber	1	315078001
406	ホースバンド	hose band	structural steel	3	NB0100G0
407	接続フランジ	connecting flange	structural steel	1	205480102
408	ハーフユニオン	half union	copper-alloy	1	N90012I11
408	封水入口銅管	sealing water tube	copper-alloy	1	350270003
408	エルボユニオン	elbow union	copper-alloy	1	N80012I11
409	90° エルボ	elbow	stainless steel	2	N1A010H1
410	おねじコネクタ	male connector	copper-alloy	1	ND0012I1
411	エルボコネクタ	elbow connector	copper-alloy	1	N00012I3
412	エルボコネクタ	elbow connector	copper-alloy	4	N00012I1
413	テフロンチューブ	teflon tube	teflon	1	NF0012L0
414	ノズル継手	nozzle joint	copper-alloy	1	456664001
415	ノズル継手	nozzle joint	copper-alloy	1	456664004
416	ティーコネクタ	tee connector	copper-alloy	1	NE0012I3
418	オリフィス	orifice	structural steel	1	*1
419	シートパッキン	gasket	fiber	1	L05004015

*1 オリフィス リストを参照ください。

Please refer to the orifice list

PART LIST
部品表

Orifice
オリフィス

SELFJECTOR model: SJ10G/GH 清浄機型番 : SJ10G/GH	
Gear Pump Model ギヤポンプ型番	Orifice オリフィス
GP10G	456970001
GP20G	414213002
GP30G	456971001
GP50G	—
GP70G	—
GP100G	—

SELFJECTOR model: SJ20G/GH 清浄機型番 : SJ20G/GH	
Gear Pump Model ギヤポンプ型番	Orifice オリフィス
GP10G	456970001
GP20G	414213002
GP30G	456971001
GP50G	456972001
GP70G	—
GP100G	—

SELFJECTOR model: SJ30G/GH 清浄機型番 : SJ30G/GH	
Gear Pump Model ギヤポンプ型番	Orifice オリフィス
GP10G	456970001
GP20G	414213002
GP30G	456971001
GP50G	456972001
GP70G	456973001
GP100G	456974001

SELFJECTOR model: SJ50G/GH 清浄機型番 : SJ50G/GH	
Gear Pump Model ギヤポンプ型番	Orifice オリフィス
GP10G	—
GP20G	414213003
GP30G	456971002
GP50G	456972002
GP70G	456973002
GP100G	456974002

SELFJECTOR model: SJ60G/GH 清浄機型番 : SJ60G/GH	
Gear Pump Model ギヤポンプ型番	Orifice オリフィス
GP10G	—
GP20G	414213003
GP30G	456971002
GP50G	456972002
GP70G	456973002
GP100G	456974002

SELFJECTOR model: SJ70G/GH 清浄機型番 : SJ70G/GH	
Gear Pump Model ギヤポンプ型番	Orifice オリフィス
GP10G	—
GP20G	414213003
GP30G	456971002
GP50G	456972002
GP70G	456973002
GP100G	456974002

SELFJECTOR model: SJ100G/GH 清浄機型番 : SJ100G/GH	
Gear Pump Model ギヤポンプ型番	Orifice オリフィス
GP10G	—
GP20G	—
GP30G	456971003
GP50G	456972003
GP70G	456973003
GP100G	456974003

SELFJECTOR model: SJ120G/GH 清浄機型番 : SJ120G/GH	
Gear Pump Model ギヤポンプ型番	Orifice オリフィス
GP10G	—
GP20G	—
GP30G	456971003
GP50G	456972003
GP70G	456973003
GP100G	456974003

SELFJECTOR model: SJ150G/GH 清浄機型番 : SJ150G/GH	
Gear Pump Model ギヤポンプ型番	Orifice オリフィス
GP10G	—
GP20G	—
GP30G	456971003
GP50G	456972003
GP70G	456973003
GP100G	456974003

(Number indicate Parts No. : 表中の番号は部品の部品番号を示す。)

BOWL ASSEMBLY

MODEL SJ10G~SJ150G

CHECKED S. A. K.

DESIGNED R. SAITO

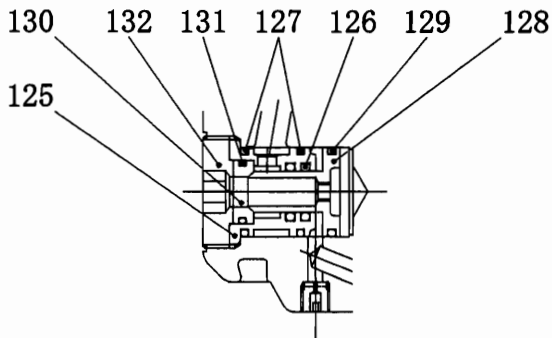
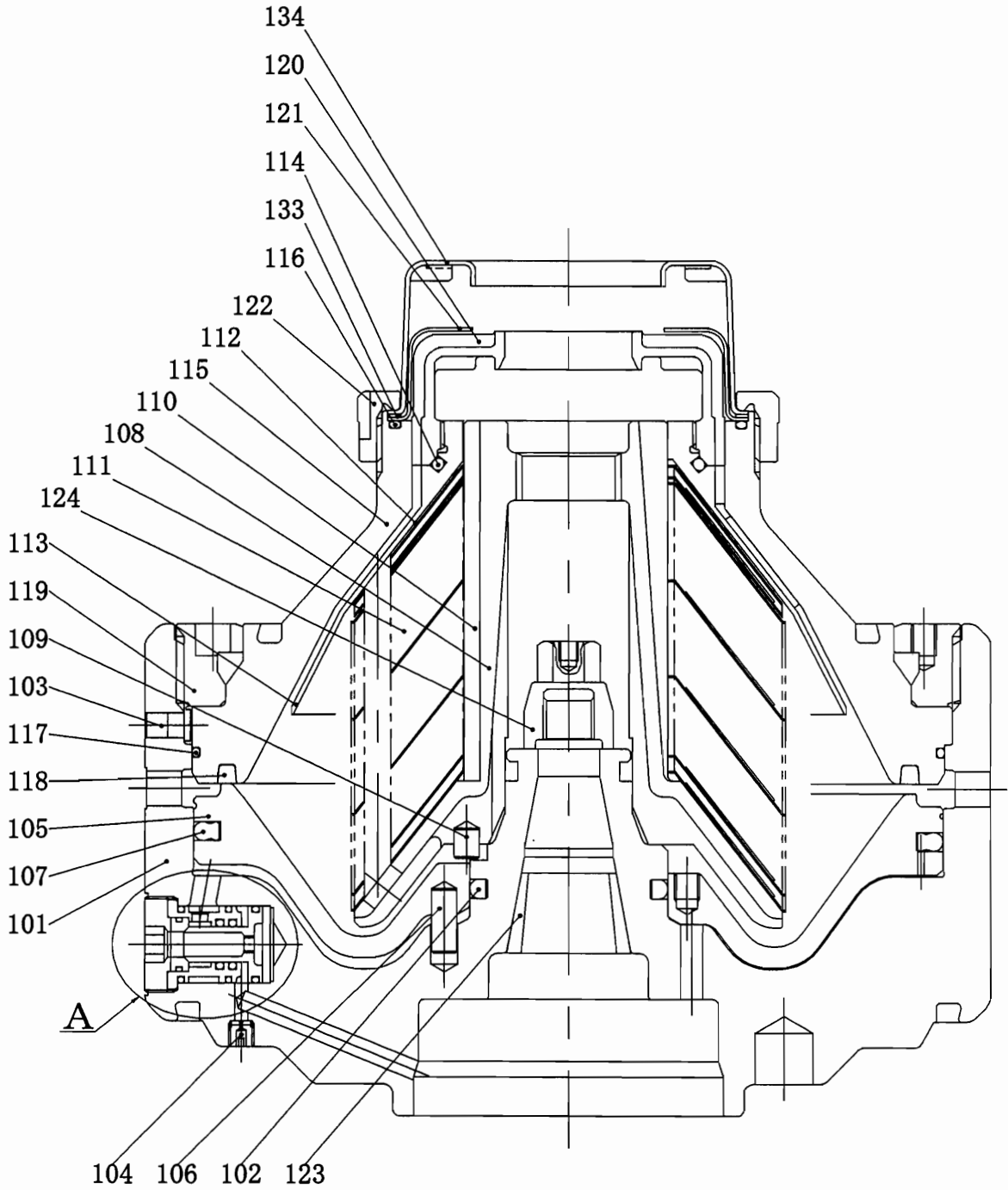
DRAWN R. SAITO

Date NOV. 1. 2001

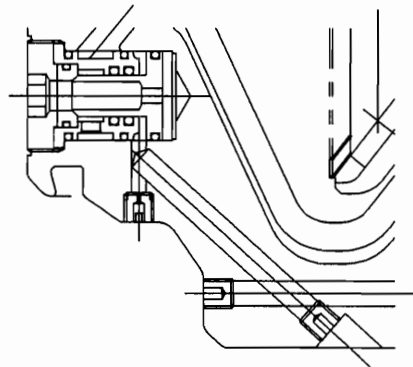
Film No.

This drawing and the design it covers are the property of MITSUBISHI KAKOKI KAISHA, LTD. and are hereby loaned and on the borrower's express agreement that they will not be reproduced, loaned, exhibited, nor used except in the limited way and private use permitted by any written consent given by the lender to the borrower.

MP
AP
RL
ABC
DE
FG
HI
JK
LM
NO
PQ
RS
TU
VW
XY
Z



DETAIL A



SJ50G~150G



MITSUBISHI KAKOKI KAISHA, LTD.

DWG. NO.

206346

Parts List

DWG. No. 206346

Symbol	Parts Name	Material	Q'ty	Parts No
	101 回転胴	bowl body	1	032427001
	102 Oリング	O ring	1	455870001
	103 ノックピン	knock pin	1	450533001
	104 水抜きノズル	drain nozzle	2	450553002
*1	105 弁シリンダ	main cylinder	1	132704001
	105 弁シリンダ	main cylinder	1	131312001
	106 平行ピン	pin	1	452351001
	107 Oリング	O ring	1	455785002
	108 案内筒	distributor	1	131309001
	109 平行ピン	pin	1	452437001
	110 平行キー	key	1	455783001
	111 分離板	disc (1)	1組	205491102
	112 上部分離板	upper disc	3	205616102
	113 水取板	top disc	1	131310104
	114 Oリング	O ring	1	A30100B
	115 回転体蓋	bowl hood	1	131307001
	116 Oリング	O ring	1	A80253B
	117 Oリング	O ring	1	455900001
	118 弁パッキン	main seal ring	1	455784001
	119 回転体ナット	bowl nut	1	131311001
	120 軽液チャンバ	light liquid chamber	1	205492001
*2	121 調節板	gravity disc	1組	*2
	122 ディスクナット	disc nut	1	205493001
	123 回転体ブッシュ	bowl bush	1	450531001
	124 袋ナット	cap nut	1	436336001
	125 バルブガイド	valve guide	2	317750001
	126 Oリング	O ring	4	A10011F
	127 Oリング	O ring	4	A42017F
	128 パイロットバルブ	pilot valve	2	450529001
	129 Oリング	O ring	2	A42017F
	130 バルブシート	valve sheet	2	436000001
	131 Oリング	O ring	2	A41013F
	132 バルブナット	valve nut	2	450489001
	133 パッキン	packing	1	455808001
	134 重液チャンバ	heavy liquid chamber	1	337082102

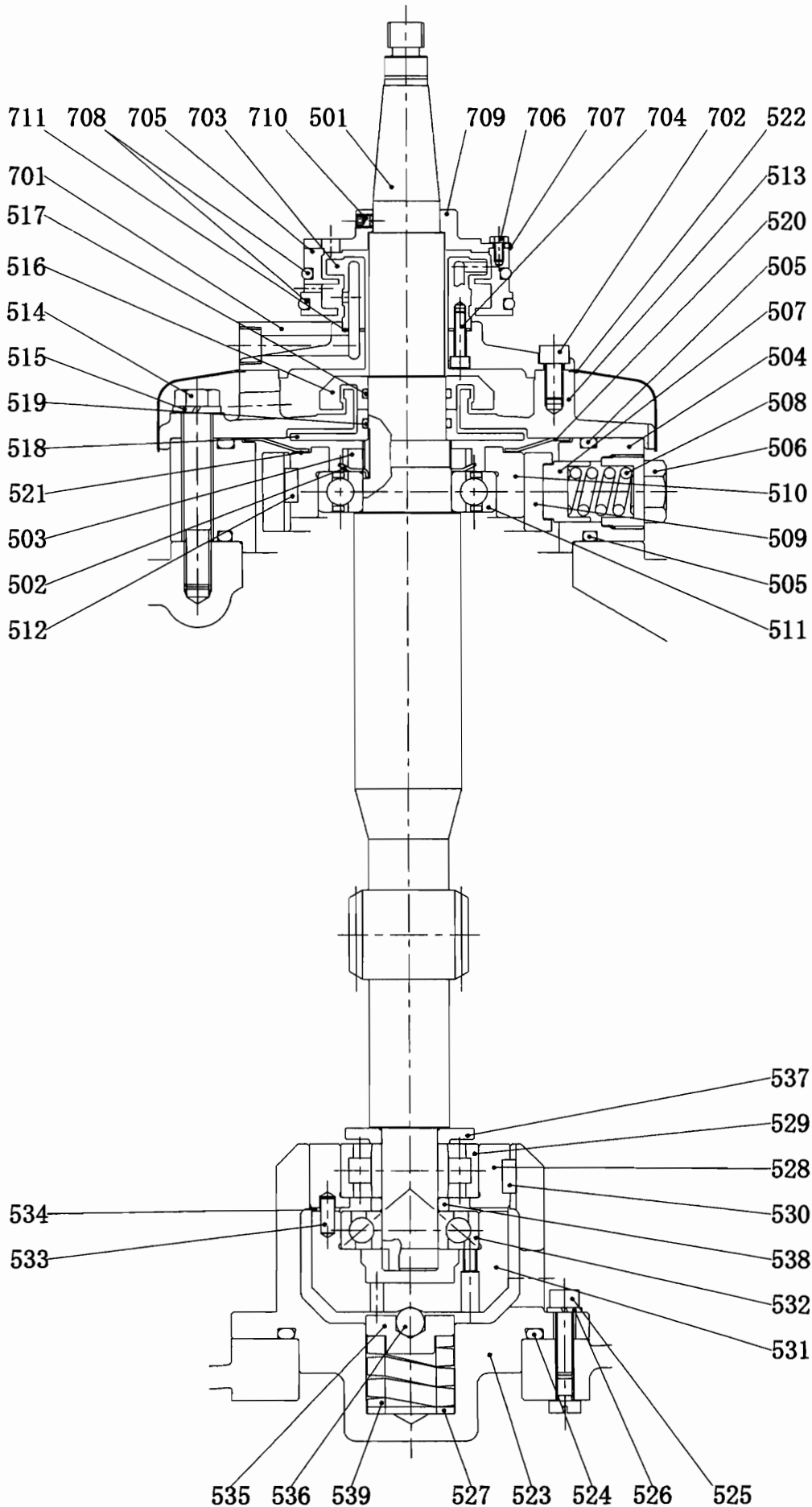
*1 C重油用特殊コーティング部品

Special coated parts for c heavy oil.

*2 付属品調節板リストを参照ください。

Please refer to the list of gravity discs.

VERTICAL SHAFT ASSEMBLY



Film No. SJJ10G~SJ150G

Model

Checked

Designed

Drawn R. SAITO

Date APR. 17. 2003

Film No.

merely loaned and on the borrower's express agreement that they

This drawing and the design it covers are the property of MITSUBISHI KAKOKI KAISHA, LTD. It will not be reproduced, loaned, exhibited, nor used except in the limited way

M
 A B C D E F G H I J K
 R A B C D E F G H I J K



MITSUBISHI KAKOKI KAISHA, LTD.

DWG. NO.

206348

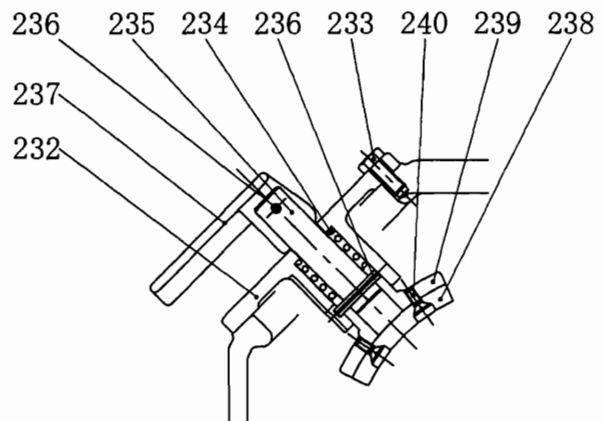
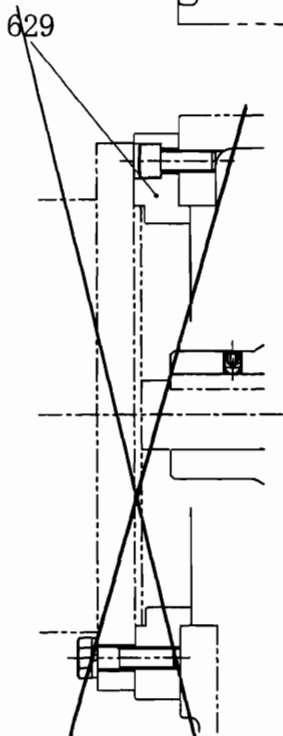
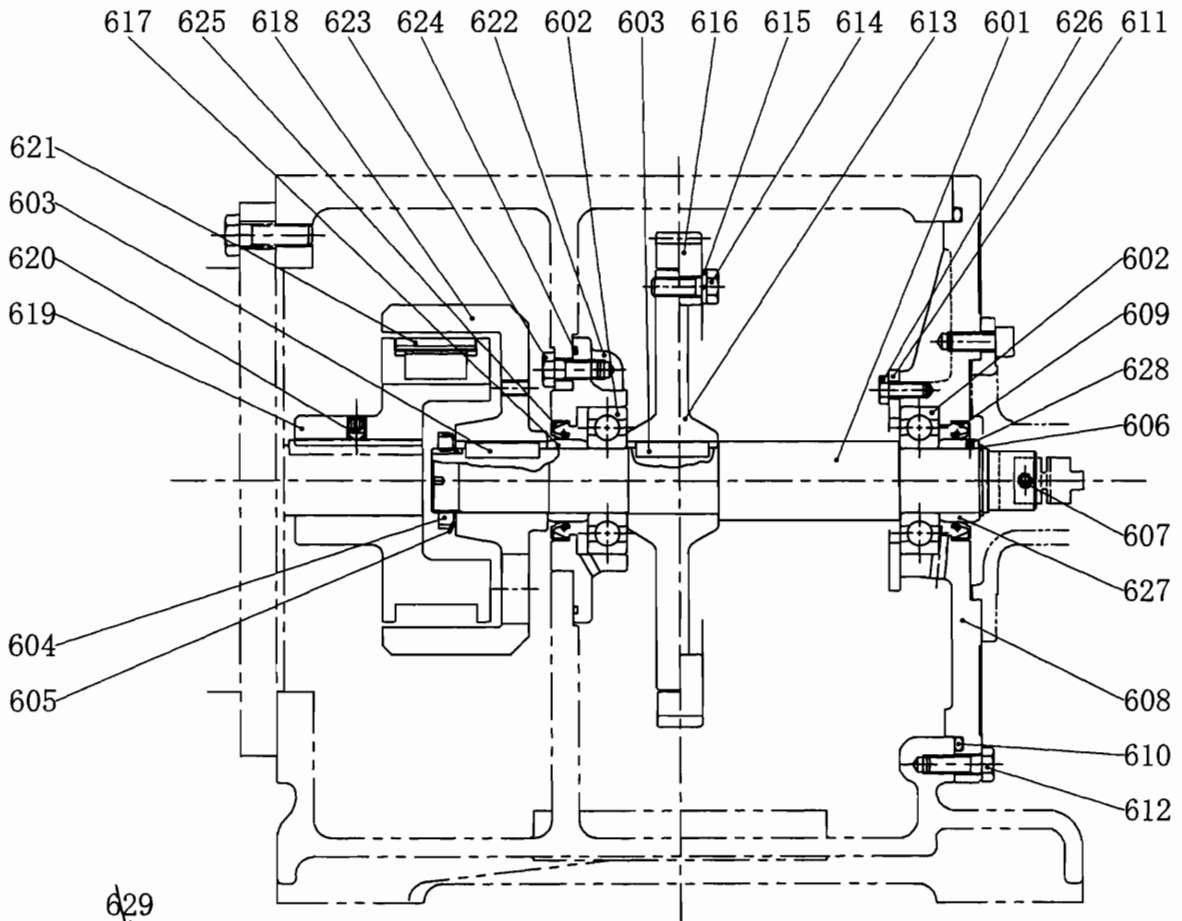
Symbol	Parts Name	Material	Q'ty	Parts No
501	堅軸(50Hz)	vertical shaft(50Hz)	1	131316001
501	堅軸(60Hz)	vertical shaft(60Hz)	1	131315001
502	軸受用座金	lock washer	1	J3010C0
503	軸受用ナット	locknut	1	J2010C0
504	上部軸受ハウジング	bearing housing (1)	1	201065001
505	Oリング	O ring	2	A20200A
506	上部ばね押え	spring retainer (1)	6	450630001
507	上部ばね受	spring case	6	450631001
508	上部ばね	upper spring	6	411984001
509	上部軸受スリーブ	bearing sleeve	1	314581001
510	上部軸受ケース	bearing case (1)	1	337284001
511	深溝玉軸受	ball bearing (1)	1	I16210J8
512	平行キー	key	1	C106025A2
513	上部軸受カバー	bearing cover (1)	1	201066001
514	六角ボルト	bolt	3	F1016100C
515	ばね座金	spring washer	3	H1016D1
516	上部軸受キャップ1	bearing cap (1)	1	450628001
517	Oリング	O ring	1	A10045A
518	上部軸受キャップ2	bearing cap (2)	1	450629001
519	Oリング	O ring	1	A10045A
520	板ばね	flat spring	1	314587001
521	スペーサ(1)	spacer (1)	1	*1
522	ミストカバ	mist cover	1	314584001
523	下部軸受ハウジング	bearing housing (2)	1	205593001
524	Oリング	O ring	1	A10145A
525	六角穴付きボルト	socket cap screw	4	F3008030G
526	ばね座金	spring washer	4	H1008D1
527	平座金	washer	1	H4033A2
528	下部軸受ケース	bearing case (2)	1	314585001
529	円筒ころ軸受	bearing (2)	1	I42307J1
530	平行キー	key	1	C106025A2
531	アンギュラ軸受ケース	bearing case (3)	1	337176001
532	アンギュラ玉軸受	ball bearing (3)	1	I27307J2
533	平行ピン	pin	2	B3006016A
534	スペーサ(2)	spacer (2)	1	436494001
535	下部ばね受	spring seat	1	436305001
536	鋼球	steel ball	1	J1020J0
537	下部軸受カバー	bearing cover (2)	1	436306001
538	カラー	collar	1	436307001
539	下部ばね	lower spring	1	409646001
701	給水盤	operating water disc	1	200110001
702	六角穴付きボルト	socket cap screw	3	F3008016B
703	給水ノズル	operating water nozzle	1	314588001
704	六角穴付きボルト	socket cap screw	3	F6006020B
705	給水チャンバ	operating water chamber	1	314589001
706	六角ボルト	bolt	4	F1005010B
707	両舌付き座金	tongued washer	4	H5005B2
708	Oリング	O ring	2	A90110A
709	チャンバカバ	chamber cover	1	316127001
710	六角穴付き止めねじ	socket set screw	1	E400608G7

Symbol	Parts Name	Material	Q'ty	Parts No
711	パッキン packing	fiber	1	436308001

*1 付属品リストを参照ください。

Please refer to the accessories list

HORIZONTAL SHAFT ASSEMBLY



BRAKE

GBC: SJ10G
GSH: SJ100GH, 120GH

File No. SJ10G~SJ150G

Model Y. TANAKA

Checked S. KIMURA

Designed R. SAITO

Drawn

Date

NDR. 1. 2001

This drawing and the design it covers are the property of MITSUBISHI KAKOKI KAISHA, LTD. They are hereby loaned and on the borrower's express agreement that they will not be reproduced, loaned, exhibited, nor used except in the limited way

AP A B C D E F G H I J K
R L A B C D E F G H I J K



MITSUBISHI KAKOKI KAISHA, LTD.

DWG. NO.

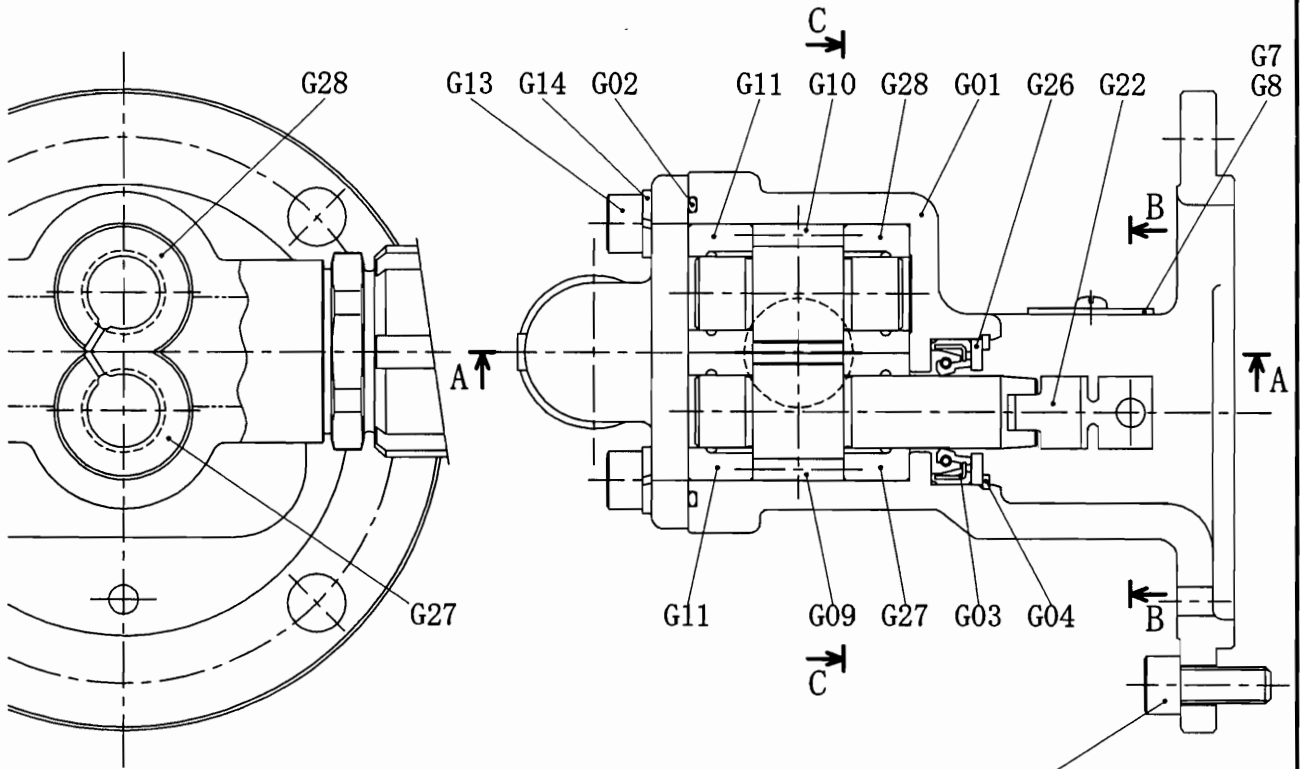
206349A

Parts List

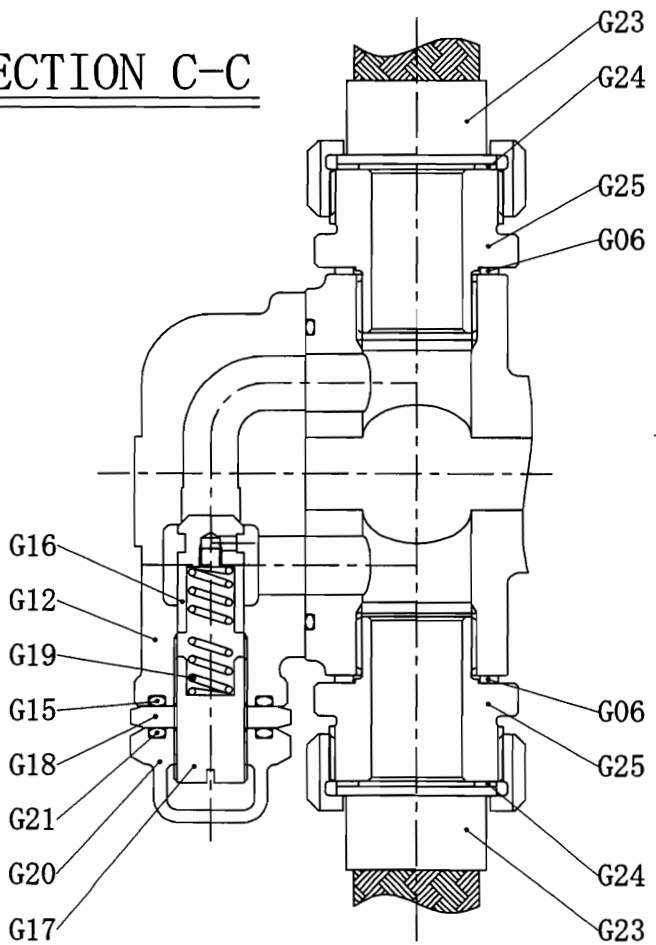
DWG. No. 206349A

Symbol	Parts Name	Material	Q'ty	Parts No
232	ブレーキ座	brake boss	cast iron	1 205548001
233	六角ボルト	bolt	structural steel	2 F1008020C
234	ブレーキばね	brake spring	piano wire	1 04095
235	ブレーキ軸	brake shaft	structural steel	1 457032001
236	スプリングピン	spring pin	tool steel	2 B4005032E
237	ブレーキハンドル	brake handle	cast iron	1 317755001
238	ブレーキライニング	brake lining	resin	1 316088001
239	ライニング座	lining boss	cast iron	1 316090001
240	すりわり付き皿小ねじ	set screw (2)	copper-alloy	2 E10051211
601	横軸	horizontal shaft	carbon steel	1 200946001
602	深溝玉軸受	ball bearing (1)	bearing steel	2 I16308J1
603	平行キー	key	carbon steel	2 C112040A2
604	軸受用ナット	locknut	structural steel	1 J2008C0
605	軸受用座金	lock washer	structural steel	1 J3008C0
606	軸用C形同心止め輪	retaining ring (C)	carbon steel wire	1 D3040D2
607	六角穴付き止めねじ	socket set screw	chromium molybdenum steel	1 E400620G6
608	大軸受盤	bearing housing (3)	cast iron	1 132886001
609	オイルシール	oil seal	NBR	1 K1507010A
610	Oリング	O ring	NBR	1 A20280A
611	ベアリング押え	bearing retainer	structural steel	1 451059001
612	六角ボルト	bolt	structural steel	4 F1010030C
613	ギヤボス	gear boss	cast iron	1 205541001
614	六角ボルト	bolt	structural steel	3 F1010030C
615	ばね座金	spring washer	carbon steel wire	3 H1010D1
616	スパイラルギヤ(60Hz)	spiral gear(60Hz)	special bronze casting	1 205471001
616	スパイラルギヤ(50Hz)	spiral gear(50Hz)	special bronze casting	1 205476001
617	カラー(1)	collar	carbon steel	1 450564001
618	フリクションプーリー	friction pulley	cast iron	1 200945001
619	フリクションボス(ハイデンス)	friction boss(hidens)	cast iron	1 201004001
619	フリクションボス	friction boss	cast iron	1 200935001
620	六角穴付き止めねじ	socket set screw	chromium molybdenum steel	1 E401012G7
621	フリクションクラッチ(50Hz)	friction clutch(50Hz)	copper alloy	4 385079105
621	フリクションクラッチ(60Hz)	friction clutch(60Hz)	copper-alloy	3 385079105
622	小軸受盤	bearing housing (4)	cast iron	1 200944001
623	六角ボルト	bolt	structural steel	4 F1010025C
624	Oリング	O ring	NBR	1 A20145A
625	オイルシール	oil seal	NBR	1 K1507010A
626	六角ボルト	bolt	structural steel	2 F1008020C
627	カラー(2)	collar	carbon steel	1 451278001
628	六角穴付き止めねじ	socket set screw	chromium molybdenum steel	1 E400404G7

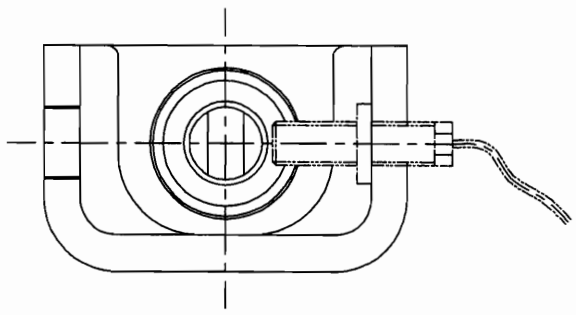
GEAR PUMP ASSEMBLY



SECTION C-C



SECTION A-A



SECTION B-B
(with D.D)

NOV. 13. 2006
 Date JUN. 14. 2004
 F.I.M. No. _____
 DRAWN A. Nakamura
 DESIGNED K. Tsuji
 CHECKED S. Kimura
 MODEL GP10GA~GP100GA (HFD, DD)
 a. Nakamura
 A. Nakamura

This drawing and the design it covers are the property of MITSUBISHI KAKOKI KAISHA, LTD. They are hereby loaned and on the borrower's express agreement that they will not be reproduced, loaned, exhibited, nor used except in the limited way.



MITSUBISHI KAKOKI KAISHA, LTD.

DWG. NO.

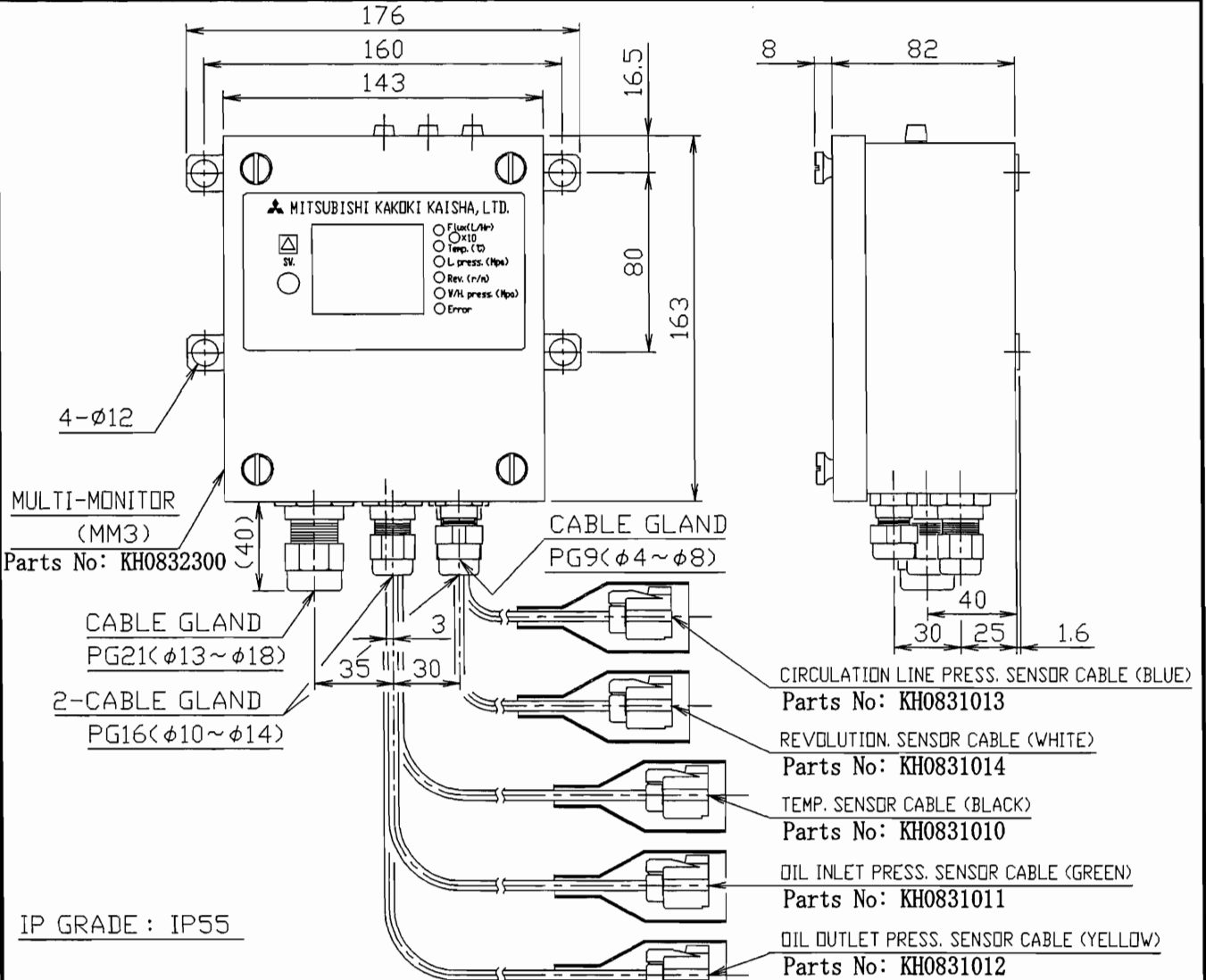
208770

Parts List

DWG. No. 208770

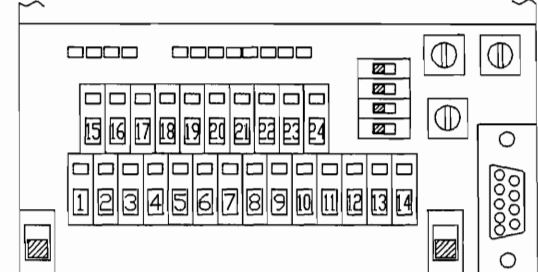
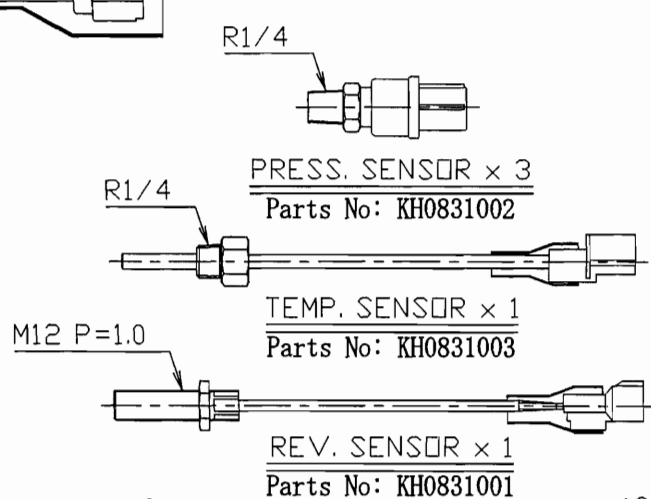
Symbol	Parts Name		Material	Q'ty	Parts No
G01	ポンプハウジング	pump housing	cast iron	1	132536001
G02	Oリング	O ring	NBR	1	A20135A
G03	オイルシール	oil seal	viton	1	K2355511F
G04	C形止め輪	retaining ring (C)	tool steel	1	D1055F1
G05	六角穴付きボルト	socket cap screw	chromium molybdenum steel	4	F3010025G
G06	シートパッキン	gasket	fiber	2	L07106120
G07	カバー	cover	structural steel	1	456871001
G08	十字穴付きなべ小ねじ	set screw (3)	structural steel	2	E200308CA
G09	ドライブギヤ	drive gear	carbon steel	1	351275001
G10	ドリブンギヤ	driven gear	carbon steel	1	351280001
G11	ブッシュ	bush	bronze casting	2	450361001
G12	バルブケース	valve case	cast iron	1	200739001
G13	六角穴付きボルト	socket cap screw	chromium molybdenum steel	4	F3012025G
G14	ばね座金	spring washer	carbon steel wire	4	H1012D1
G15	Oリング	O ring	NBR	1	A10044A
G16	調圧弁	valve stem	carbon steel	1	450085001
G17	調圧ねじ	adjusting screw	structural steel	1	450362001
G18	調圧ナット	nut	structural steel	1	450087001
G19	調圧弁ばね	valve spring	piano wire	1	369052001
G20	袋ナット	cap nut	cast iron	1	450088001
G21	Oリング	O ring	NBR	1	A10044A
G22	安全接手	safety joint	polyacetal	1	459771001
G23	ポンプ接続フレキ管	connecting tube(1)	stainless steel	2	319991ABS
G24	シートパッキン	gasket	fiber	2	L06105115
G25	ニップル	nipple	cast iron	2	456787001
G26	押さえ板	clamp plate	structural steel	1	456797001
G27	ブッシュ (2A)	bush (2A)	bronze casting	1	461498001
G28	ブッシュ (2B)	bush (2B)	bronze casting	1	461499001

MULTI-MONITOR (MM3)



IP GRADE : IP55

NO.	CONNECTION	CONNECT TO
1	POWER SOURCE (DC24V)	CONTROL PANEL
2	GND	
3	OIL LEAKAGE ALARM	
4	NO DISCHARGE ALARM	
5	HIGHLY WATER SIGNAL	
6	OIL FEED SIGNAL	
7	DISCHARGE SIGNAL	
8	REVOLUTION.SIGNAL OUTPUT (COLLECTOR)	REVOLUTION. SIGNAL OUTPUT
9	REVOLUTION.SIGNAL OUTPUT (EMITTER)	
10	REVOLUTION. SENSOR (BLACK)	
11	REVOLUTION. SENSOR (WHITE)	REVOLUTION. SENSOR (WHITE)
12	REVOLUTION. SENSOR (RED)	
13	TEMP. SENSOR (BLACK)	TEMP. SENSOR (BLACK)
14	TEMP. SENSOR (RED)	
15	OIL INLET PRESS. SENSOR (BLACK)	OIL INLET PRESS. SENSOR (GREEN)
16	OIL INLET PRESS. SENSOR (GREEN)	
17	OIL INLET PRESS. SENSOR (RED)	
18	OIL OUTLET PRESS. SENSOR (BLACK)	OIL OUTLET PRESS. SENSOR (YELLOW)
19	OIL OUTLET PRESS. SENSOR (BLACK)	
20	OIL OUTLET PRESS. SENSOR (RED)	
21	CIRCULATION FLOW PRESS. SENSOR (BLACK)	CIRCULATION LINE PRESS. SENSOR (BLUE)
22	CIRCULATION FLOW PRESS. SENSOR (PINK)	
23	CIRCULATION FLOW PRESS. SENSOR (RED)	
24		



OUTSIDE VIEW OF TERMINAL

SEP. 27. 05' Date
 a. Takamura - KPEC
 DESIGNED
 No. Issue
 CHECKED
 MODEL MM3 S.J10G~150G
 DRAWN
 FILM No.

This drawing and the design it covers are the property of MITSUBISHI KAKOKI KAISHA, LTD. They are hereby loaned and on the borrower's express agreement that they will not be reproduced, loaned, exhibited, nor used except in the limited way



MITSUBISHI KAKOKI KAISHA, LTD.

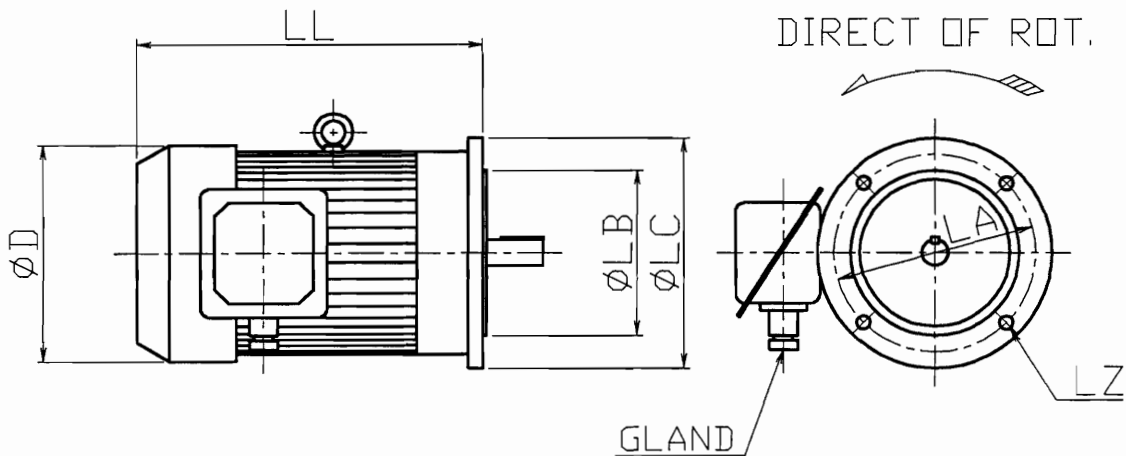
DWG. NO. 206912A

INDUCTION MOTOR

AC440V, ~~220V~~ 60Hz 4P

INSULATION CLASS	1.5~3.7kwE , 5.5~18.5kw:B	No.of PHASE	3
RULE	ABS, BV (JG, NV, LR, NK)	RATING	CONTINUOUS
AMBIENT. TEMP.	50°C, (45°C)	IP GLADE	IP44

OUT LINE



DIMENSION

NO.	FRAME NO.	OUT PUT (kw)	440V			220V			OIL PURIFIER TYPE
			AMP'S	min-1	GLAND	AMP'S	min-1	GLAND	
1	90L	1.5	3.0	1740	20a	6.0	1740	20a	DP12, DP20, SJ700
2	100L	2.2	4.0	1730	20a	8.0	1730	20a	DP31
3	112M	3.7	6.5	1720	20a	12.9	1720	20a	DP41, SJ10G
4	132S	5.5	9.3	1755	20a	18.5	1755	20b	DP54, SJ10GH, 20G, 30G
5	132M	7.5	12.7	1770	20a	25.4	1770	20c	SJ20GH, 30GH, 50G
6	160M	11	18.5	1770	20b	37.0	1770	25b	SJ50GH, SJ60G/GH, 70G/GH
7	160L	15	24.4	1765	20c	48.8	1765	30a	SJ100G, SJ120
8	180M	18.5	30.1	1760	25a	60.2	1760	30a	SJ150G/GH, SJ100GH, SJ120GH

NO.	FRAME NO.	D	LA	LB	LC	LL	LZ	BALL BEARING		WEIGHT (kg)
								LOAD SIDE	FREE SIDE	
1	90L	188	165	130	200	302	12	6205ZZ	6205ZZ	24
2	100L	208	215	180	250	328	14.5	6206ZZ	6205ZZ	30
3	112M	235	215	180	250	368	14.5	6306ZZ	6206ZZ	45
4	132S	270	265	230	300	375	14.5	6308ZZ	6306ZZ	59
5	132M	270	265	230	300	413	14.5	6308ZZ	6306ZZ	72
6	160M	320	300	250	350	485	18.5	6309ZZ	6208ZZ	110
7	160L	320	300	250	350	525	18.5	6309ZZ	6208ZZ	130
8	180M	390	350	300	400	575	18.5	6311ZZ	6310ZZ	180

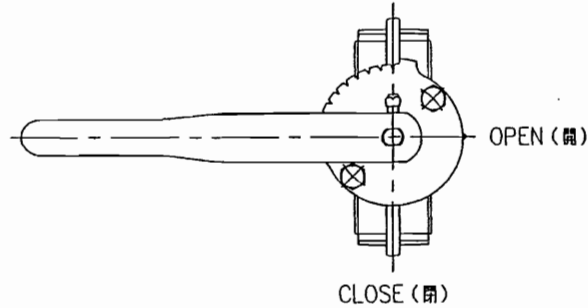


MITSUBISHI KAKOKI KAISHA, LTD.

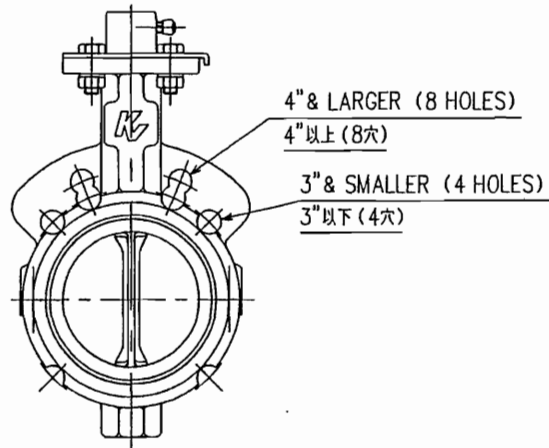
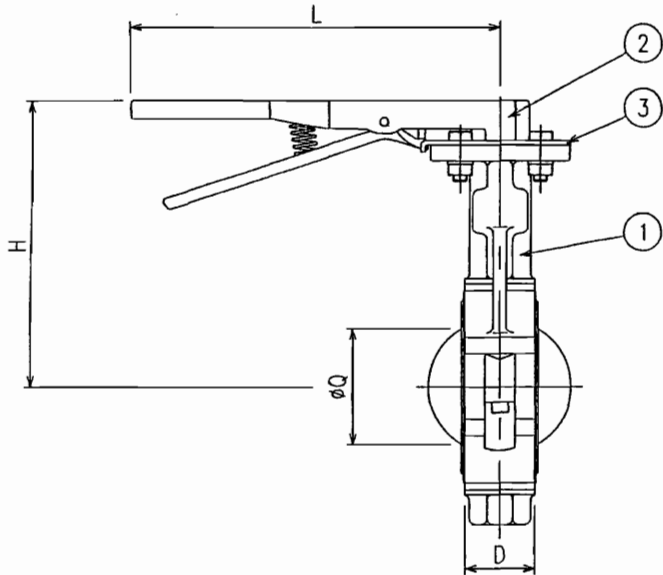
DWG. NO. **206911C**

MAR. 1. 06' Date
 a. Nakamura DESIGNED
 KPEC
 DRAWN
 F. Uchiwa CHECKED
 S. Kimura MODEL
 SJ10G~SJ150G

This drawing and the design it covers are the property of MITSUBISHI KAKOKI KAISHA, LTD. They are hereby loaned out on the borrower's express agreement that they will not be reproduced, loaned, exhibited, nor used except in the limited way



CLOSE (閉)



VALVE SIZE		VALVE DIMENSIONS (mm)				MASS (kg)
mm	inch	D	H	L	Q	
50	2	41	172	267	35	4
65	2-1/2	44	184	267	52	5
80	3	44	191	267	65	6
100	4	51	210	267	92	7
125	5	54	223	267	121	8
150	6	54	235	267	140	11

NOTE: 1."Q" IS THE DISC CHORDAL DIMENSION AT FACE VALVE FOR DISC CLEARANCE INTO PIPE FITTING OR EQUIPMENT.
 2.DO NOT USE FLANGE GASKETS.
 3.OPEN VALVE BEFORE TIGHTENING FLANGE BOLTS.
 4.DO NOT USE IN RUBBER LINED PIPING.
 IN CASE OF USE IN LINED PIPING, PLEASE CONTACT NIPPON KEYSTONE CORP..
 5.DO NOT USE FOR JIS5K RF FLANGE AND LAP JOINT FLANGE.
 IF USE FOR JIS5K RF FLANGE AND LAP JOINT FLANGE, PLEASE CONTACT NIPPON KEYSTONE CORP..

注: 1. Q寸法はバルブに隣接するフランジ又はパイプの許容最小内径です。
 2. バルブを取付ける際、ガスケットを使用しないで下さい。
 3. フランジを締め込む際、弁体を数度開いて下さい。
 4. ゴムライニング配管には使用しないで下さい。
 ライニング配管にご使用の場合は弊社にご相談下さい。
 5. JIS5K RF フランジ及びラップジョイントには使用しないで下さい。
 ご使用になる場合は、弊社にご相談下さい。

3	NOTCHED PLATE	ASTM A36	1	UNI-CHROM PLATED SS400
2	LEVER HANDLE	ASTM A536	1	FCD
1	VALVE		1	SEE DWG.No.V-BA6291SE.
No.	PARTS NAME	MATERIAL	Q'TY	REMARKS

BUTTERFLY VALVE
 WITH LEVER HANDLE
 F990 (JIS 5K DRILLING) 2"~6"

Design	Check	Approval
<i>[Signature]</i> 200/11/16	<i>[Signature]</i> 200/11/16	<i>[Signature]</i> 200/11/19
Scale		

KEYSTONE

Dwg.No.	Rev.
BA2A00031E	0

Ref.No.
tyco / Flow Control
 NIPPON KEYSTONE CORPORATION
 Kobe-Tokyo

MAX. OPERATING PRESSURE: 1.0MPa
 MAX. OPERATING TEMPERATURE: 149°C
 FLUID: FUEL OIL SLUDGE, OILS EXCEPT FOR FUEL,
 AIR, CARBON DIOXIDE, WATER, SEAWATER,
 LUBRICATING OILS, OILS FOR HEAT
 EXCHANGING.

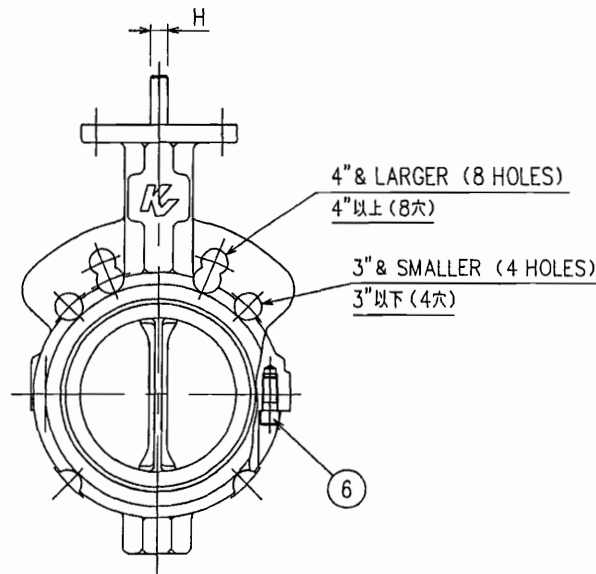
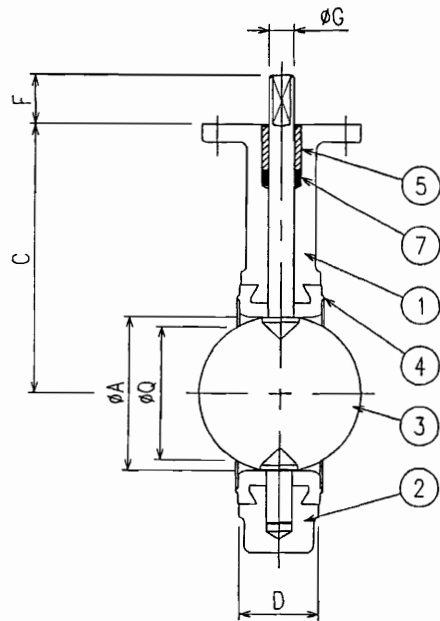
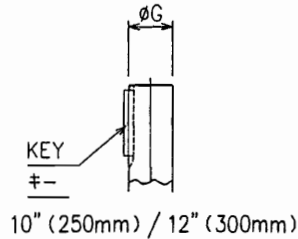
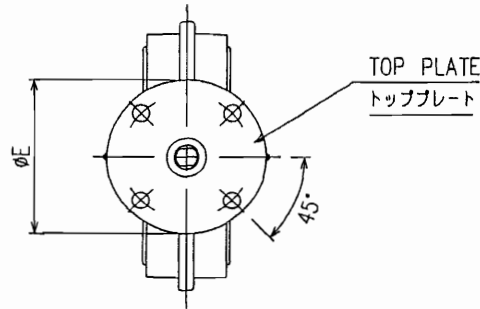
最大使用圧力: 1.0MPa
 最大使用温度: 149°C

流体: 燃料油スラッジ、燃料油を除く油、空気、炭酸ガス、水、
 海水、潤滑油、操作油及び熱媒油

< HYDROSTATIC TEST PRESSURE >
 SHELL TEST: 1.5MPa
 SEAT LEAKAGE TEST: 1.1MPa

< 静水圧試験 >
 耐圧試験: 1.5MPa
 弁座漏れ試験: 1.1MPa

VALVE SIZE		VALVE DIMENSIONS (mm)						STEM DIMENSIONS (inch)			TOP PLATE DATA (mm)			MASS
mm	inch	A	C	D	E	F	Q	G	H	KEY	BOLT CIRCLE	No. HOLES	HOLE DIA.	(kg)
50	2	51	140	41	102	32	35	9/16	3/8	—	82.6	4	11.1	3
65	2-1/2	64	152	44	102	32	52	9/16	3/8	—	82.6	4	11.1	4
80	3	76	159	44	102	32	65	9/16	3/8	—	82.6	4	11.1	5
100	4	102	178	51	102	32	92	5/8	7/16	—	82.6	4	11.1	6
125	5	127	191	54	102	32	121	3/4	1/2	—	82.6	4	11.1	8
150	6	146	203	54	102	32	140	3/4	1/2	—	82.6	4	11.1	9
200	8	197	241	64	152	32	191	7/8	5/8	—	127	4	14.3	16
250	10	248	273	64	152	51	241	1-1/8	—	1/4x1/4	127	4	14.3	22
300	12	298	311	76	152	51	286	1-1/8	—	1/4x1/4	127	4	14.3	31



NOTE: 1. "Q" IS THE DISC CHORDAL DIMENSION AT FACE VALVE FOR DISC CLEARANCE INTO PIPE FITTING OR EQUIPMENT.
 2. DO NOT USE FLANGE GASKETS.
 3. OPEN VALVE BEFORE TIGHTENING FLANGE BOLTS.
 4. DO NOT USE IN RUBBER LINED PIPING.
 IN CASE OF USE IN LINED PIPING, PLEASE CONTACT NIPPON KEYSTONE CORP..
 5. DO NOT USE FOR JIS5K RF FLANGE AND LAP JOINT FLANGE. IF USE FOR JIS5K RF FLANGE AND LAP JOINT FLANGE, PLEASE CONTACT NIPPON KEYSTONE CORP..

注記: 1. Q寸法はバルブに隣接するフランジ又はパイプの許容最小内径です。
 2. バルブを取付ける際、ガスケットを使用しないで下さい。
 3. フランジを締め込む際、弁体を数度開いて下さい。
 4. ゴムライニング配管には使用しないで下さい。
 ライニング配管にご使用の場合は弊社にご相談下さい。
 5. JIS5K RF フランジ及びラップジョイントには使用しないで下さい。
 ご使用になる場合は、弊社にご相談下さい。

SPECIAL NOTE : ELONGATION OF THE BODY MATERIAL SHALL BE 12% AND ABOVE.

特記 : ボディ材質の伸びが12%以上であること。

Ref.No.

tyco / Flow Control
 NIPPON KEYSTONE CORPORATION
 Kobe - Tokyo

No.	PARTS NAME	MATERIAL	Q'TY	REMARKS
7	PACKING	BUNA N	1	
6	CAP SCREW	ASTM A307 B	2	S25C
5	BUSHING	ACETAL	1	
4	SEAT	PTFE/EPDM	1	
3	DISCSTEM	SUS316	1	
2	LOWER BODY	ASTM A395	1	FCD450
1	UPPER BODY	ASTM A395	1	FCD450

Design			Check			Approval		
yalk			Sas			RS		
2022.01.30			2022.01.30			2022.01.30		
Scale			~			④		
KEYSTONE								
Dwg.No.						Rev.		
V-BA6291SE						2		

BUTTERFLY VALVE
 (JIS 5K DRILLING)
 F990-629 2"~12"

**AUTOMATIC CONTROL DEVICE
FOR OIL PURIFIER
自動制御盤**

Client
顧客 SASEBO HEAVY INDUSTRIES CO.,LTD.

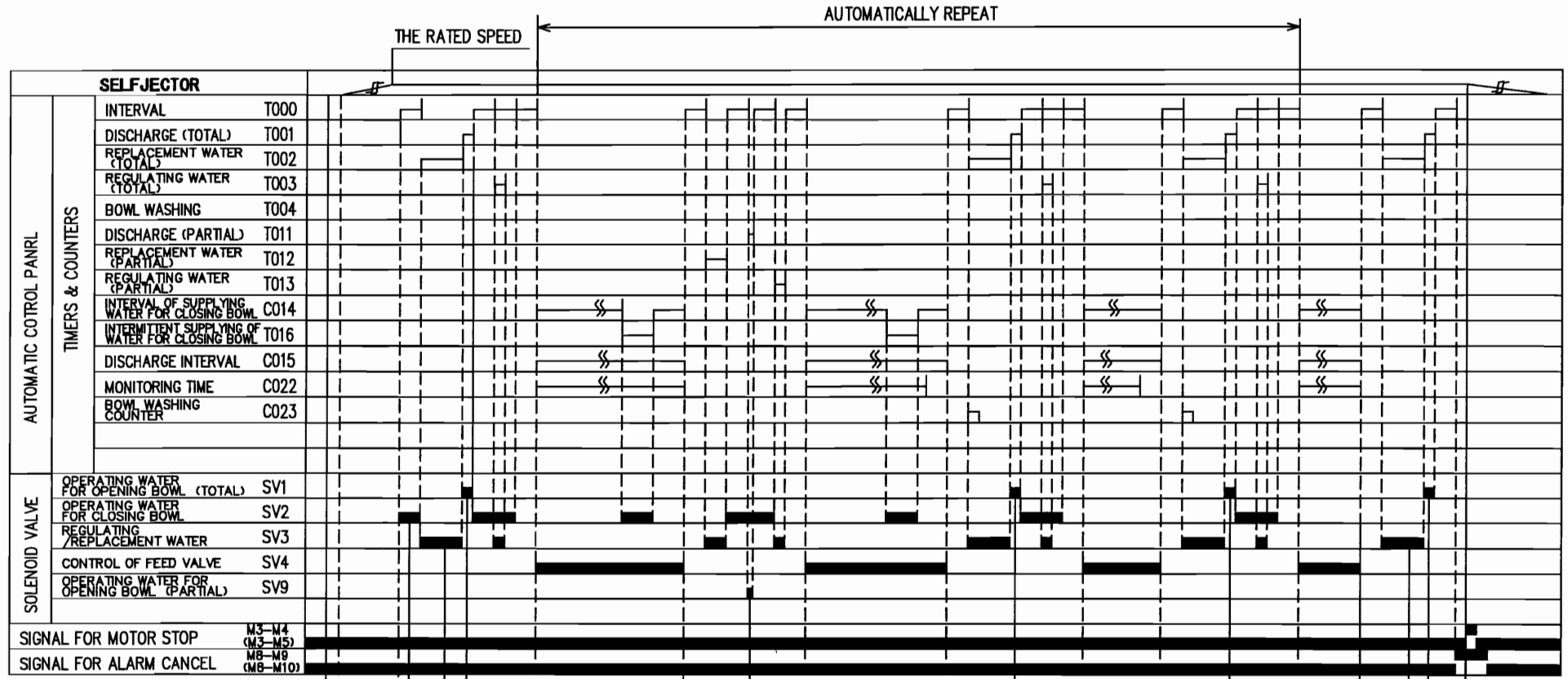
Ship No.
船番 761 / ~~762~~

Purifier model
清浄機型番 SJ50GH

Service 用途		Type of panel 盤の型式	Supply 供給数	Mass 質量	
No.1 No.2 FUEL OIL PURIFIER		GSH-1	2 set(s)	12 kg /set	
SCREWS	ISO	ITEMES 項目			
		Control source 電源	AC 110V, 60Hz		
		Control voltage 制御電圧	AC 110V, 60Hz		
Engineering design department MITSUBISHI KAKOKI KAISHA, LTD. 三菱化工機株式会社 産業機械技術部		Name plate 銘板	Letter 記入文字	Material 材料	
			For use 用途銘板	English 英文	Acryl アクリル
			For notice 注意銘板	English 英文	
Approved 照査	<i>S.Kimura</i>	Color of panel 盤塗装色	Munsell No. 7.5BG7/2 マンセル No.		
Checked 検図	<i>S.Kita</i>	Class of ship 船級	ABS		
Made 作成	<i>H.Sasaki</i>	Remarks 備考	IP44		
Scale 尺度	NONE	Our order No. 弊社工番 A1001140-1000/ A1001141-1000			
Date 日付	- -				

The drawing and the design it covers are the property of MITSUBISHI KAKOKI KAISHA, LTD. They are merely loaned and on the borrower's express agreement that they will not be reproduced, copied, loaned, exhibited, not used except in the limited way and private use permitted by any written consent given by the lender to the borrower.

M.F. A.P. A.B.C.D.E.F.G.H.I.J.K...
 R.L. A.B.C.D.E.F.G.H.I.J.K...



TURN THE POWER SOURCE SWITCH ON THE AUTOMATIC CONTROL PANEL TO "ON".

START SELFJECTOR BY A STARTER PROVIDED SEPARATELY.

ACTION OF TIMERS: TIME-UP, PRE-SET TIME

ACTION OF COUNTERS: COUNT, COUNT-UP

FEEDING

OPERATING WATER FOR OPENING BOWL (TOTAL)

OPERATING WATER FOR OPENING BOWL (PARTIAL)

WHEN "WATER DETECT" SIGNAL IS RECEIVED FROM THE WATER DETECTOR ON CONDITION THAT C022 IS NOT TIMED UP.

WHEN "WATER DETECT" SIGNAL IS RECEIVED FROM THE WATER DETECTOR ON CONDITION THAT C022 IS TIMED UP.

REPLACEMENT WATER

OPERATING WATER FOR CLOSING BOWL

AFTER CONFIRMING THAT SELFJECTOR HAS ATTAINED THE RATED SPEED, PRESS THE PUSH-BUTTON SWITCH "AUTO. START"

WHEN C015 IS TIMED UP TOTAL DISCHARGE OPERATION IS PERFORMED.

PRESS THE PUSH-BUTTON SWITCH "AUTO. STOP"

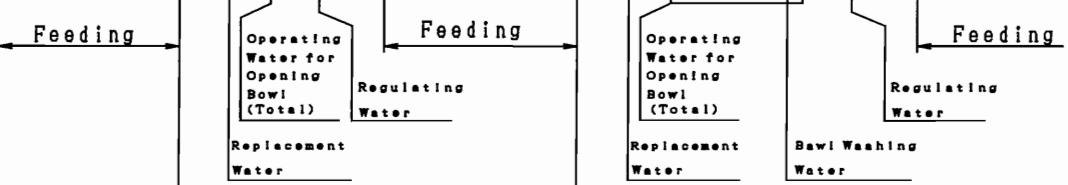
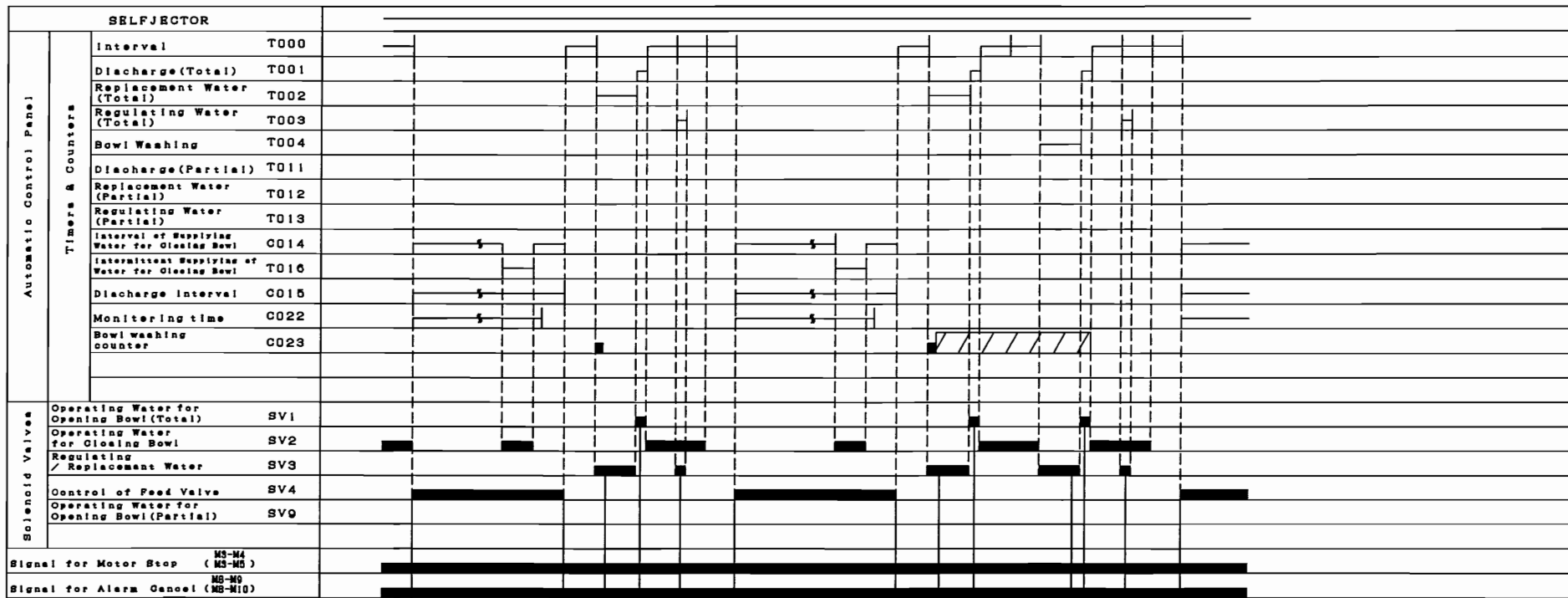
MOTOR STOP

OPERATING WATER FOR OPENING BOWL REPLACEMENT WATER

No.	DATE	REVISIONS	MADE	CHKD.	APPR.	CLIENT	LOCATION	DATE	MADE	CHKD.	APPR.	DRAWING NO.	JOB NO.	REV.
1	11-18-05	REVISED THE WORD	K.N.	K.U.	S.K.	CLIENT		May-18-2002	K. Nojima			351319		D
2	Aug-27-05	MODIFIED	K.N.	K.U.	M.S.	PLANT			K. Usui					
3	Dec-27-02	MODIFIED	K.N.	K.U.	N.I.				N. Ikeda					

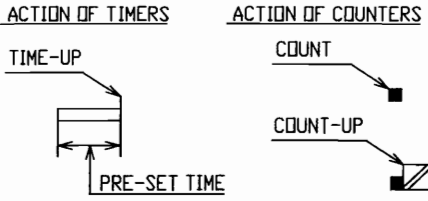
TITLE Timing Chart "Bowl Washing" GSH

(HIDENS Operation)



When C015 is timed up or "Water Detect" signal is received from the Water Detector on condition that C022 is timed up.

When C015 is timed up or "Water Detect" signal is received from the Water Detector on condition that C022 is timed up.



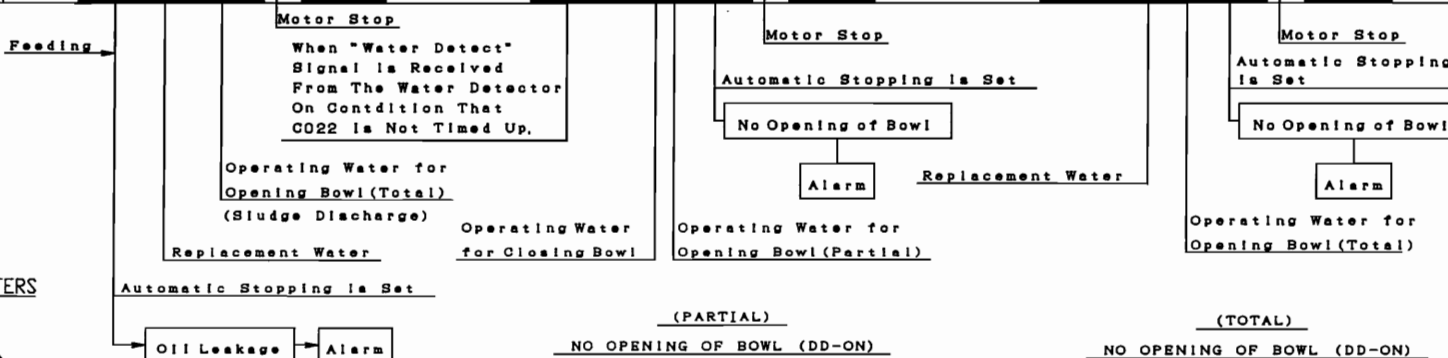
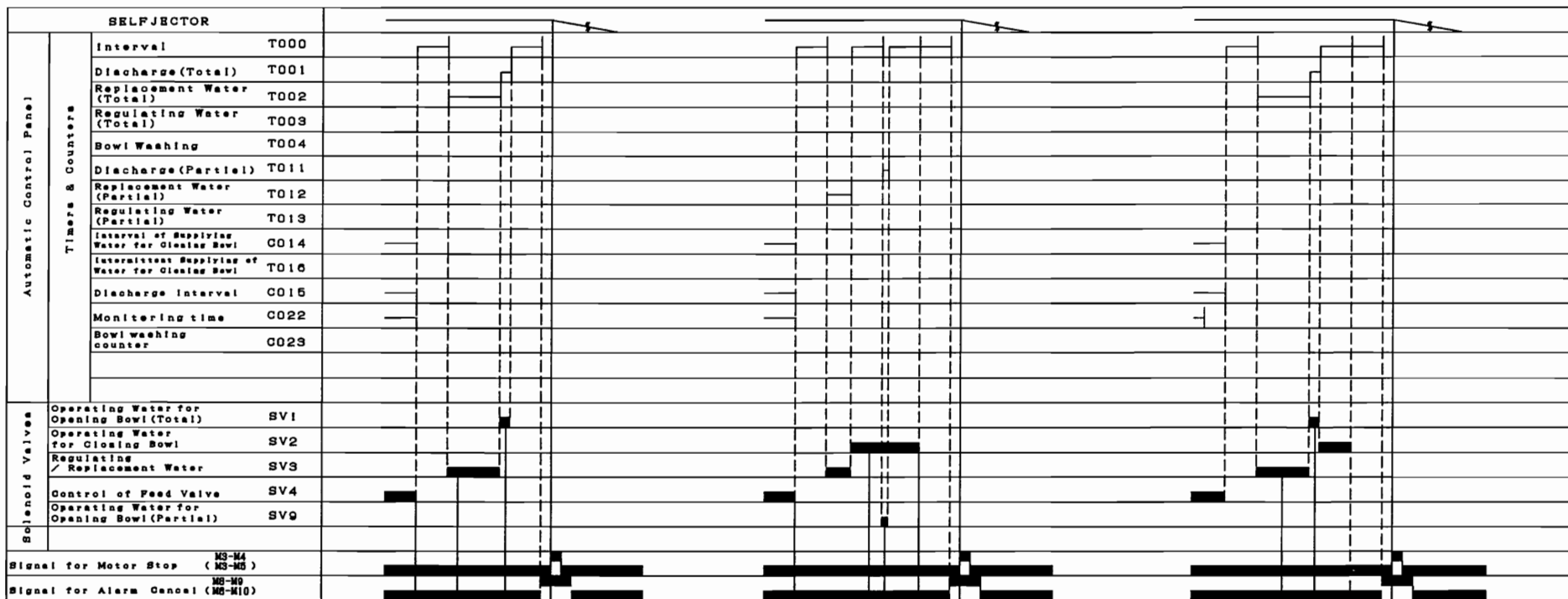
ISSUED TO	
DUPL	
TOTAL	

NO. 1	DATE 11-27-12	MODIFIED	CLIENT	DATE OCT-17-2002	DOCUMENT NO. 351907	REV. A
			PLANT	MADE K. NOJIMA		
			LOCATION	CHKD. K. USUI	JOB NO.	
				APPR. Y. TANAKA		

TITLE

Timing Chart "Alarm" GSH

(HIDENS Operation)

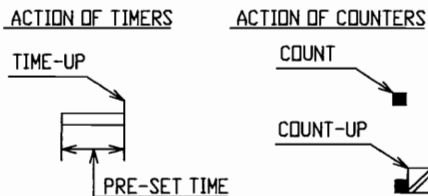


OIL LEAKAGE (LM-ON)

NO.	DATE	REVISIONS	MADE	CHKD.	APPR.
1	Aug-27-10	MODIFIED	K.N.	K.U.	M.S.
2	Dec-27-10	MODIFIED	K.N.	K.U.	N.I.

CLIENT	DATE	DOC. NO.	REV.
	Oct.-17-2002	351908	B
PLANT	MADE	CHKD.	JOB NO.
LOCATION	K. USUI	APPR.	Y. TANAKA

ISSUED TO	
DUPL.	
TOTAL	



PARTS LIST

TYPE:GSH-1 (TR) 部 品 表

Name of part 名 称	Mfr's Name 製 造 所	Specification 仕 様		DeviceNo. 器具番号
Programmable Controller シーケンサ	Mitsubishi Kakoki Kaisha, LTD. Koyo Electronics Industries Co., LTD. Yamanaka Denko Co., Ltd 三菱化工機 光洋電子 ヤマナカ電工	CPU BOARD CPU基板	PZ3M	PC
		RELAY BOARD リレー基板	GY-1 FUSE ヒューズ FGBO-A 2A RELAY リレー G6D-1A G6E-134P	
		PLC PANEL 操作表示パネル	S-10D-M	S-10D-M
Change-over switch 切換スイッチ	Fuji electric Co., Ltd 富士電機	Type : AR22PR-220B		8A
		Type : AR22PR-210B		43QA
Push-button Switch 押釦スイッチ		Type : AR22F0R-10R	Red	3-5A
		Type : AR22F0R-10B	Black	3-11
		Type : AR22G2R-11R	Red	3-5E
Push-button switch with lamp 照光式 押釦スイッチ		Type : AR22G4L-10E4G	Green	GL/3-4
		Type : AR22G4L-10E4R	Red	RL/3R-28
Signal lamp 表示灯	Type : DR22DOL-E4W	White	WL	
Fuse ヒューズ	Utsunomija electric Mfg. Co., Ltd 宇都宮電機	Type : UC-1	5A	EF1, EF2, EF3 ※1
Transformer 変 圧 器	Yamanaka Denko Co., Ltd ヤマナカ電工	Type : 300VA		TR ※1
Power supplies 直流電源	Cosel Co., Ltd コーセル	Type : LCA50S-24		PS
Terminal block 端子台	Kimura electric Co., Ltd キムラ電機	Type : TS		TB

※1 TR and Fuse EF3 are equipped
in case of GSH-1TR
型式「GSH-1TR」のみの装備

MITSUBISHI KAKOKI KAISHA. LTD.

DWG. NO.

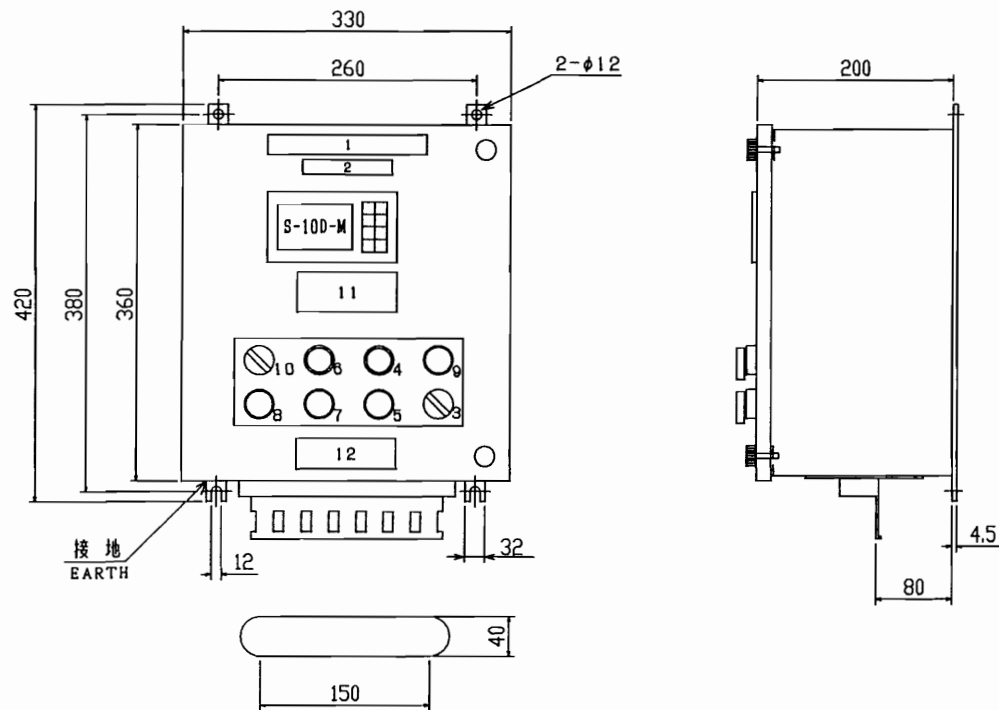
457175S

1 2 3 4 5 6 7 8 9 10 11 12 13 14 15 16 17 18 19 20

TITLE OUTLINE DIMENTION

TYPE:GSH-1 外形図

21 22 23 24 25 26 27 28 29 30 31 32 33 34 35 36 37

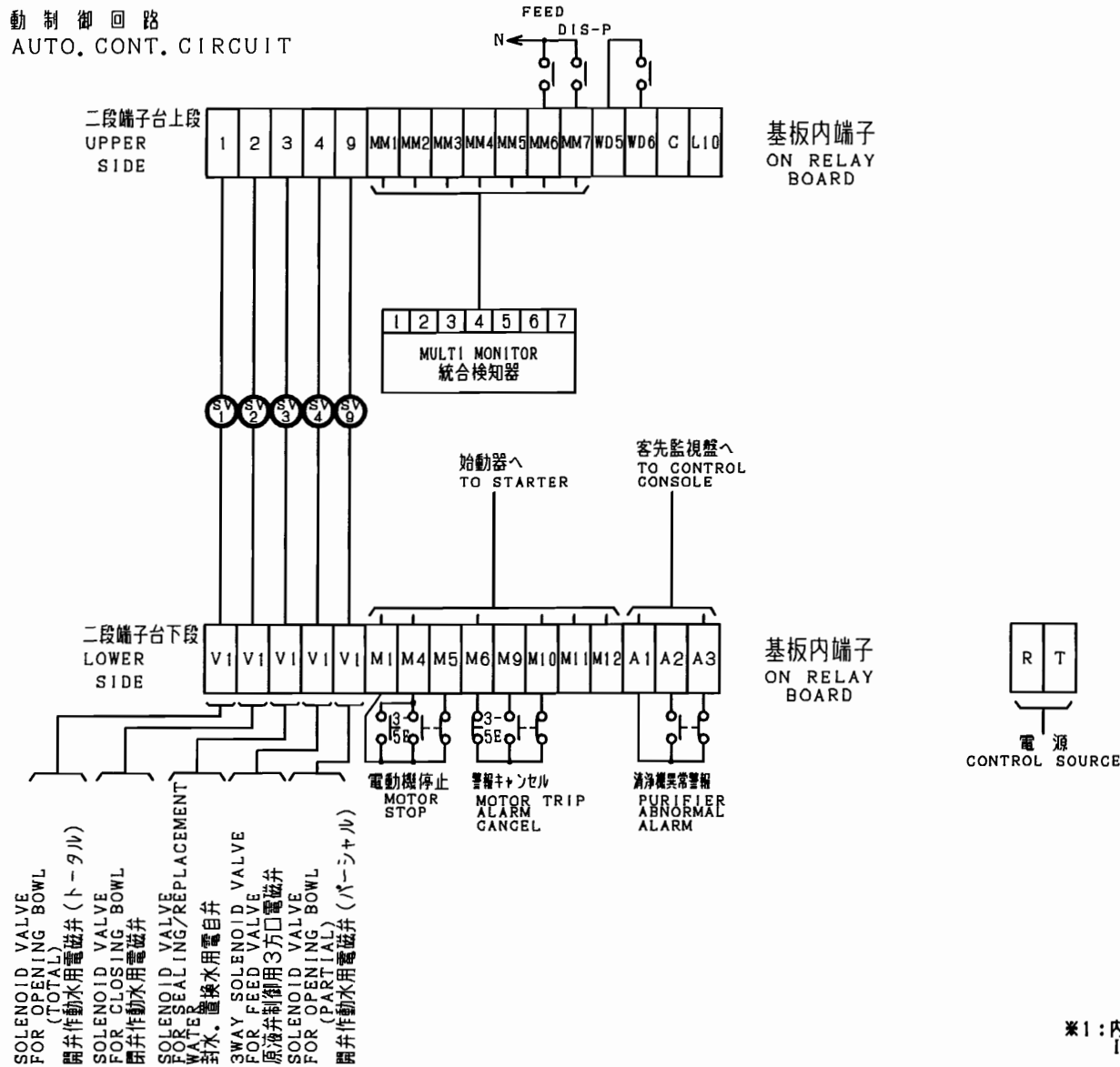


LETTER ON NAMEPLATE 銘板記入文字		
1	AUTO, CONT. PANEL	自動制御盤
2	(SERVICE NAMEPLATE)	(用途銘板)
3	CONT. SOURCE OFF ON	制御電源 OFF ON
4	AUTO. START	自動運転
5	AUTO. STOP	自動停止
6	ALARM RESET	警報リセット
7	DISCHG TEST	排出テスト
8	EMERG. STOP	非常停止
9	CONT. SOURCE	制御電源
10	MM FUNCTION OFF ON	MM機能 OFF ON
11	NOTICE STARTING WHEN OIL PURIFIER HAS ACQUIRED RATED SPEED, PRESS PUSH BUTTON "AUTO START"	注意 始動 油清浄機が定格速度 に達した時 押釦 「自動運転」を押すこと。
12	MITSUBISHI KAKOKI KAISHA, LTD.	MITSUBISHI KAKOKI KAISHA, LTD.

質量 12kg

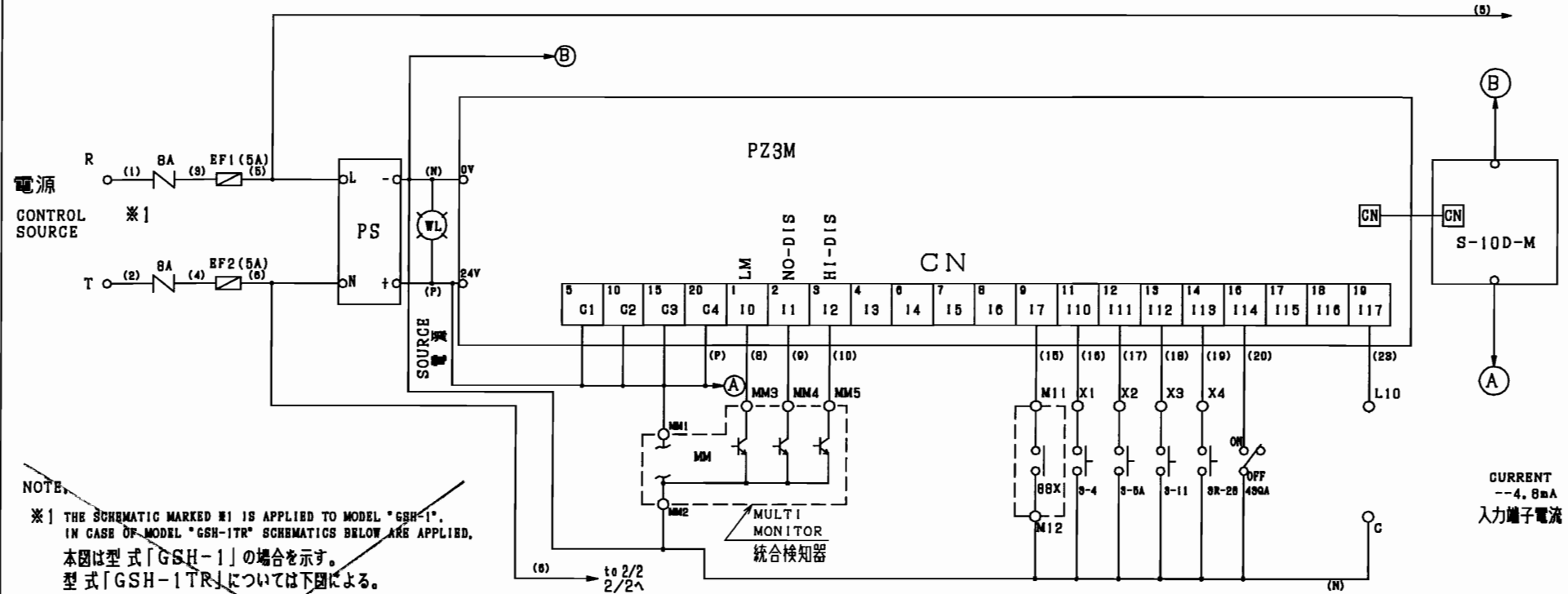
<table border="1"> <tr><td>C</td></tr> <tr><td>B</td></tr> <tr><td>A</td></tr> </table>	C	B	A	DATE	REVISIONS	MADE	CHKD	APPR.	CLIENT	DATE: Dec-26-2002	DWG. NO.	REV.
	C											
	B											
	A											
					PLANT	MADE: K.No jima	351911					
					LOCATION	CHKD: K.Usul	JOB NO.					
						APPR: N.Ikeda						

1号 (2号) 自動制御回路
NO. 1 (NO. 2) AUTO. CONT. CIRCUIT

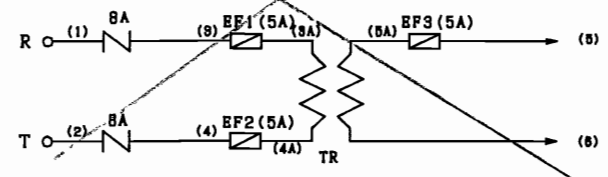


*1: 内部配線
INTERNAL WIRING

No.	DATE	REVISIONS	MADE	CHKD	APPR.	CLIENT	DATE: Dec.-26-2002	DOCUMENT NO.	REV.
						PLANT	MADE: K.Nojima	351910S	
						LOCATION	CHKD: K.Usui	JOB NO.	
						APPR: N.Ikeda			



NOTE.
 ※1 THE SCHEMATIC MARKED #1 IS APPLIED TO MODEL "GSH-1".
 IN CASE OF MODEL "GSH-1TR" SCHEMATICS BELOW ARE APPLIED.
 本図は型式「GSH-1」の場合を示す。
 型式「GSH-1TR」については下図による。

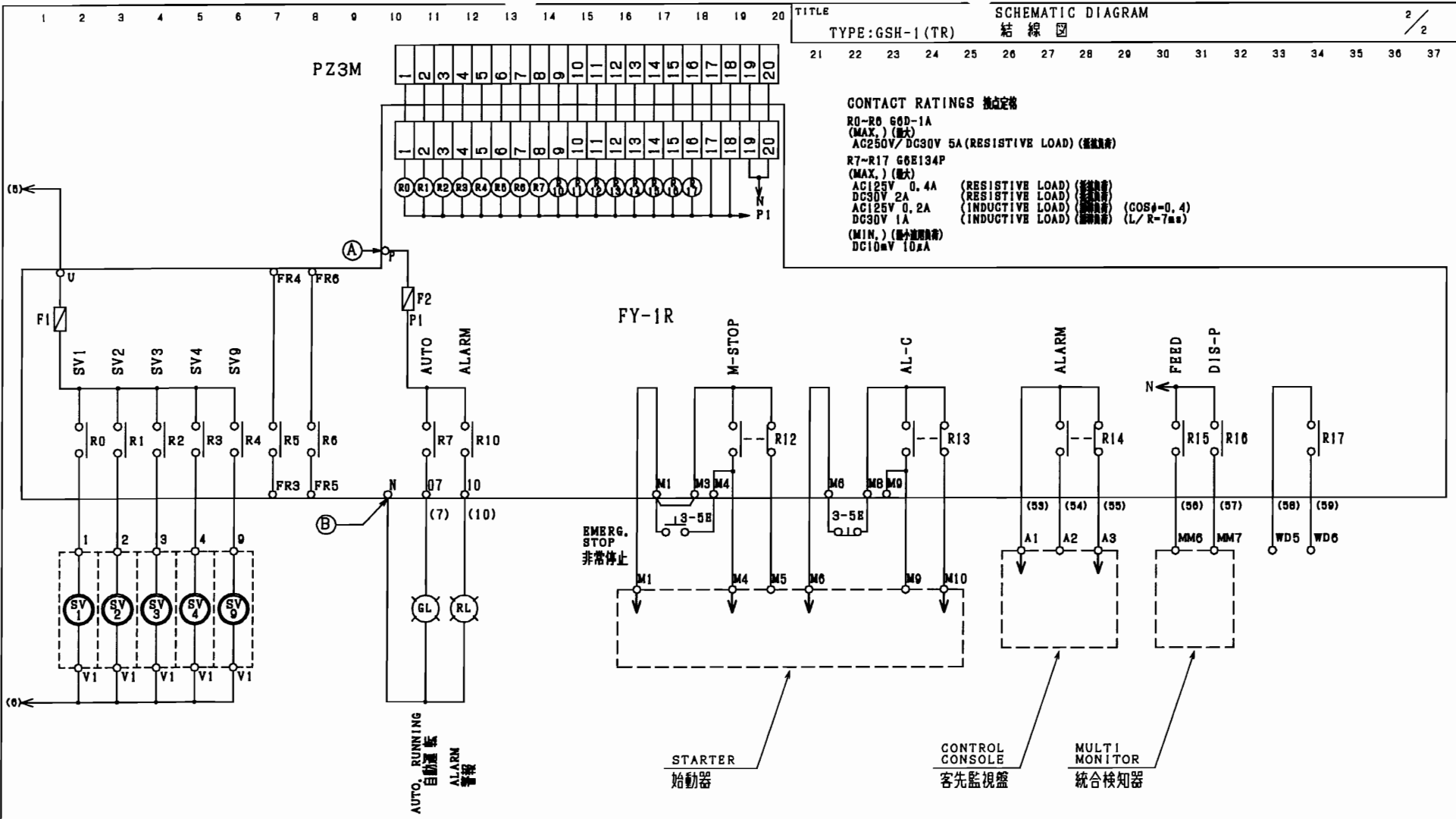


- MULTI MONITOR SOURCE
マルチモニタ電源
- LEAKAGE SIGNAL
漏れ検知信号
- NO DISCHARGE SIGNAL
排出不良信号
- WATER DETECTION SIGNAL
水分検知信号
- MOTOR RUNNING
電動機運転
- AUTO. START
自動運転
- AUTO. STOP
自動停止
- DISCHARGE TEST
排出テスト
- ALARM RESET
警報リセット
- MM FUNCTION
MM機能

CURRENT
 --4.8mA
 入力端子電流

C					CLIENT	DATE: Dec.-26-2002	DOCUMENT NO.	REV.
	B				PLANT	MADE: K.Nojima	351913	A
A	Aug-18-03	MODIFIED	K.N.	K.U.	M.S.	CHKD: K.Usui	JOB NO.	
No.	DATE	REVISIONS	MADE	CHKD	APPR.	APPR: N.Ikeda		

CONTACT RATINGS 接点定格
 R0-R6 60D-1A (MAX.) (最大)
 AC250V/DC30V 5A (RESISTIVE LOAD) (抵抗負荷)
 R7-R17 G6E134P (MAX.) (最大)
 AC125V 0.4A (RESISTIVE LOAD) (抵抗負荷)
 DC30V 2A (RESISTIVE LOAD) (抵抗負荷)
 AC125V 0.2A (INDUCTIVE LOAD) (誘起負荷) (COSφ=0.4)
 DC30V 1A (INDUCTIVE LOAD) (誘起負荷) (L/R=7ms)
 (MIN.) (最小適用値)
 DC10mV 10mA



- | | | |
|-------|---------------------------|--------------|
| M-STP | - MOTOR STOP | 電動機停止 |
| AL-C | - MOTOR TRIP ALARM CANCEL | 電動機停止警報キャンセル |
| ALARM | - PURIFIER ABNORMAL ALARM | 浄化機異常警報 |
| FEED | - FEEDING | 通液 |
| DIS-P | - DISCHARGE PROCESS | 排出工程 |

① ② ③ ④	DATE	REVISED	MADE	CHKD.	APPR.	CLIENT	DATE: Dec.-26-2002	DOCUMENT NO.	REV.
	11-16-03	MODIFIED	K. N.	K. U.	M. S.	PLANT	MADE: K.Nojima	351914S	A
	No.	DATE	REVISIONS	MADE	CHKD.	APPR.	LOCATION	CHKD: K.Usui	JOB NO.
								APPR: N.Ikeda	

Valve specification 弁類要目表

AUTOMATIC CONTROL DEVICE

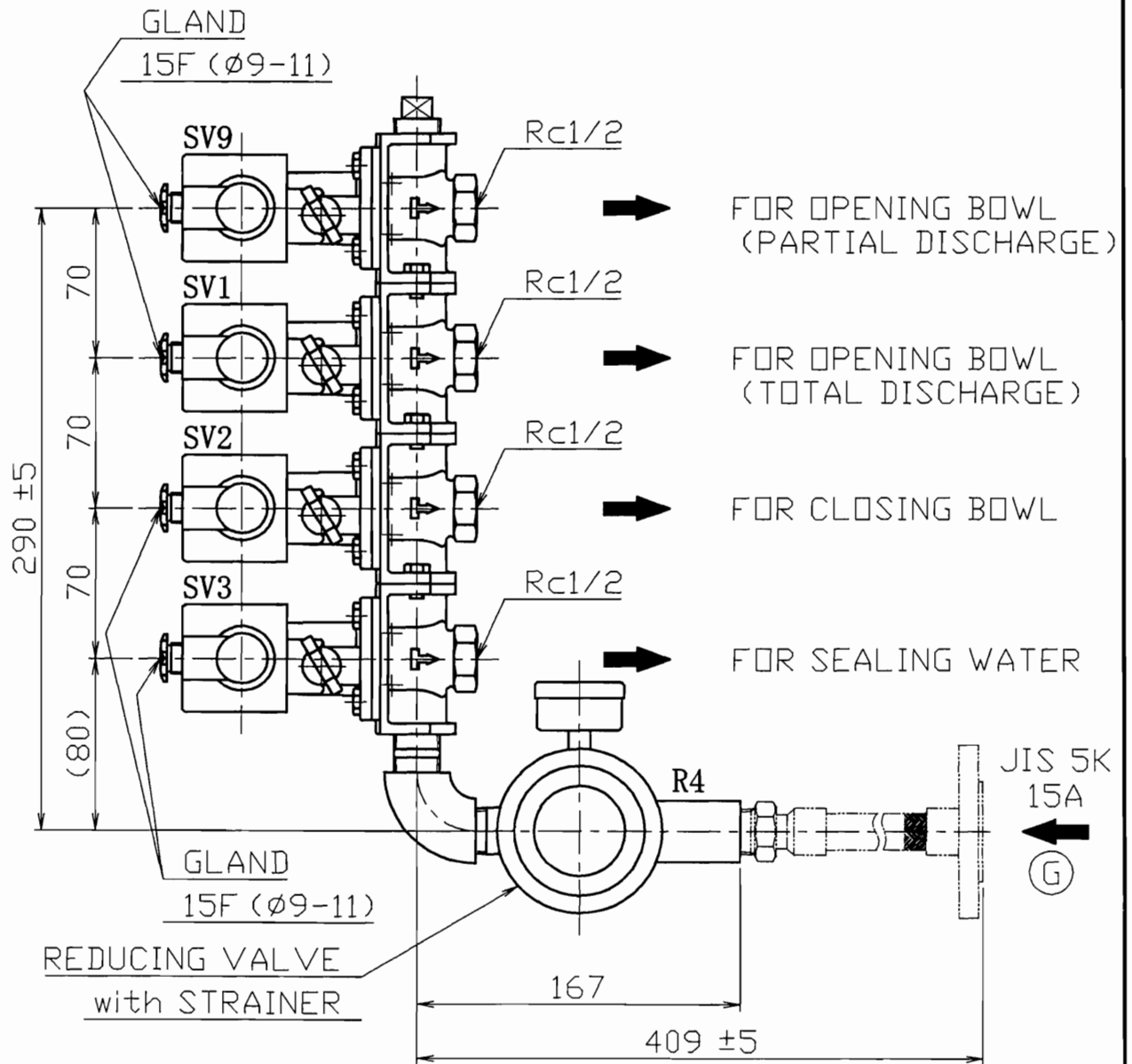
GSH-1

Our order No. : A1001140-1000/A1001141-1000
弊社工番 :

Service : 用途 :			
No.1 No.2 FUEL OIL PURIFIER			
Valves 弁類	Solenoid valve 電磁弁	3-way solenoid valve 3方口切換電磁弁	3-way cylinder valve 3方口シリンダ弁
Use 用途	For sealing water & Operating water 封水/作動水用	For 3-way cylinder valve 3方口シリンダ弁用	For dirty oil 原液用
Bore 口径 (mm)	15 A	8 A	40 A
Voltage or inlet press 電圧、又は 入口圧力	AC 110V , 60Hz		Air supply 0.5 ~ 0.9 MPa (5.0 ~ 9.0 Kg/cm ²)
Action 動作	Magnetized → Open 通電 → 開	---	Air supply B → C Air less B → A
Mass 質量	1.5 kg/set	0.3 kg/set	16 kg/set
Quantity 台数	4 set(s)	1 set(s)	1 set(s)
Symbol 記号	SV1 SV2 SV3 SV9	SV4	CV1
Remarks 備考	SV1: for opening 開弁用 SV2: for closing 閉弁用 SV3: for sealing / replacement water 封水 / 置換水用 SV9: for partial opening ハーフ開弁用		

OUTLINE OF VALVES FOR AUTO. CONTROL DEVICE

IP GRADE : IP 55



MAY 17.07
 Date SEP. 4.02
 Film No.
 Drawn KPEC
 Designed a. Nakamura
 Checked S. Kuroki
 Model SJ10G~SJ150G (GSH)
 This drawing and the design it covers are the property of MITSUBISHI KAKOKI KAISHA, LTD. They are hereby loaned and on the borrower's express agreement that they will not be reproduced, loaned, exhibited, nor used except in the limited way



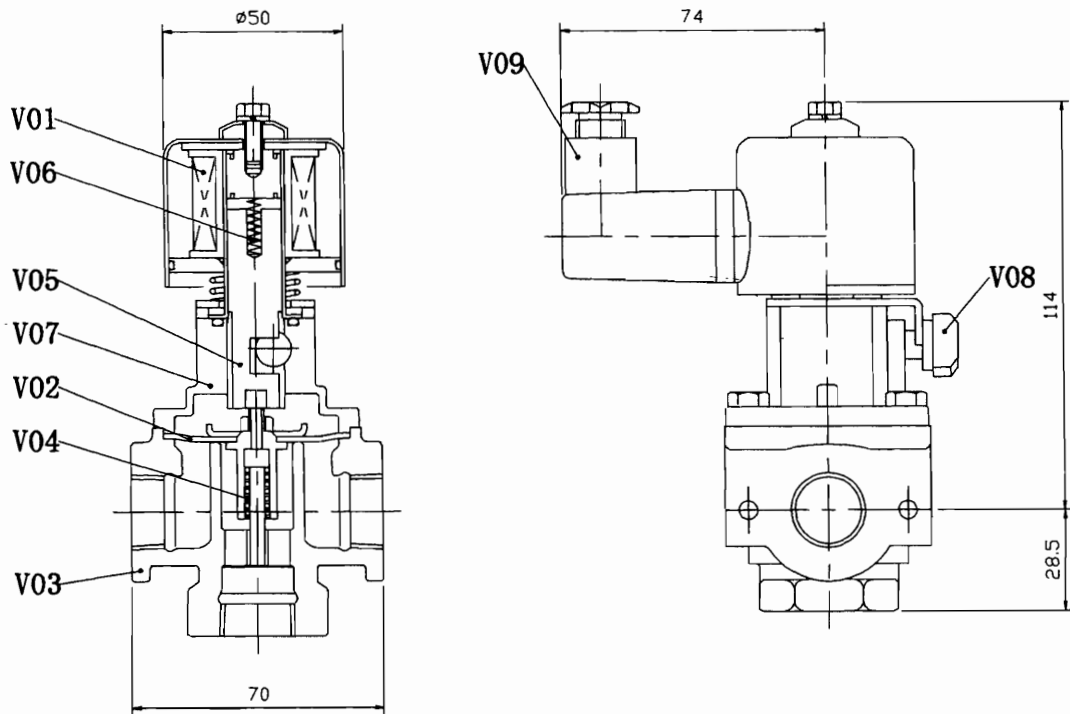
MITSUBISHI KAKOKI KAISHA, LTD.

DWG. NO.

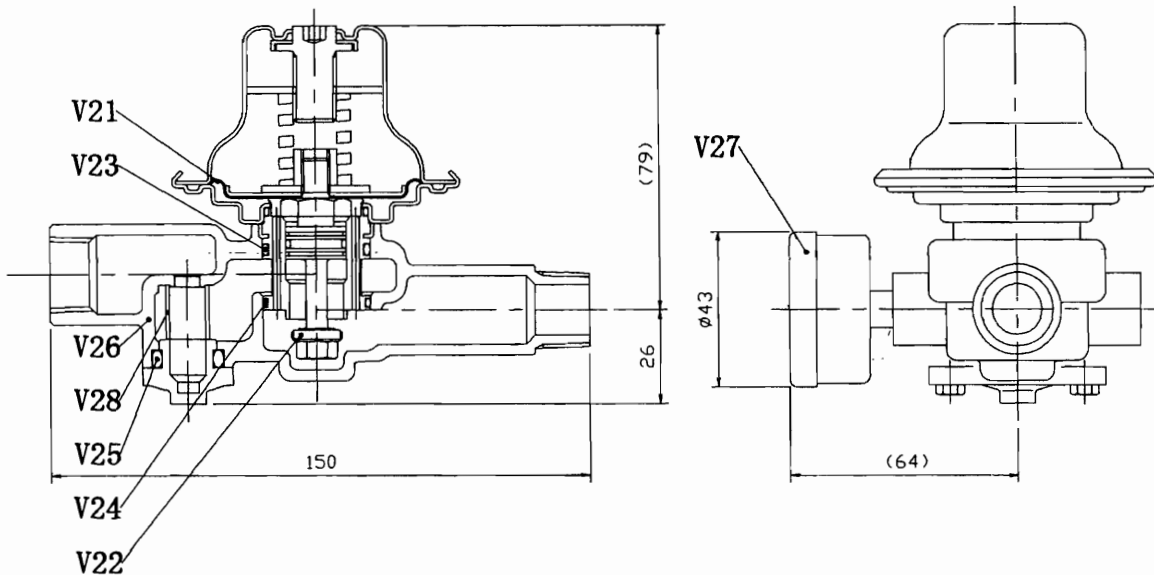
206906A

ASSEMBLY OF VALVES FOR AUTO. CONTROL DEVICE

SOLENOID VALVE (SV1, SV2, SV3, SV9)



REDUCING VALVE (R4)



E.I.R. No. _____ Date SED. 4.02' _____ DRAWN KPEC _____ DESIGNED S. Kimura _____ CHECKED Y. Tanaka _____ MODEL S-J10G~S-J150G

This drawing and the design it covers are the property of MITSUBISHI KAKOKI KAISHA, LTD. They are hereby loaned and on the borrower's express agreement that they will not be reproduced, loaned, exhibited, nor used except in the limited way

APPLICABLE REVISIONS
 A B C D E F G H I J K



MITSUBISHI KAKOKI KAISHA, LTD.

DWG. NO.

206910A

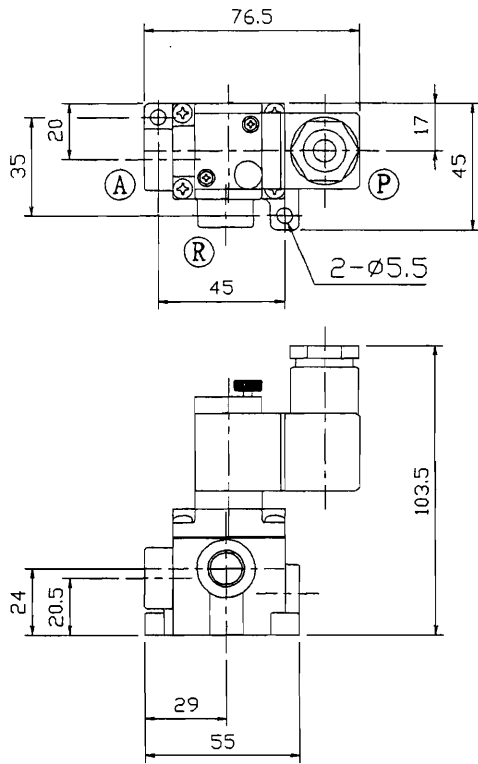
Parts List

DWG. No. 206910A

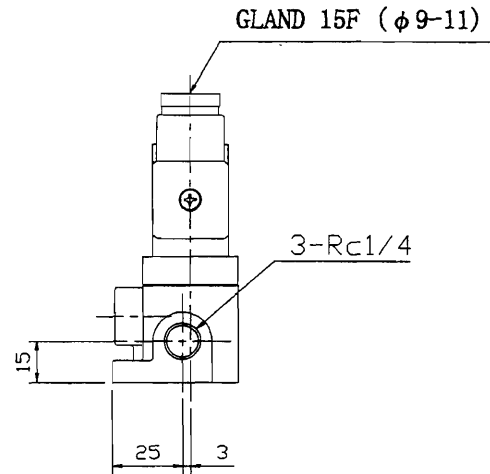
Symbol	Parts Name	Material	Q'ty	Parts No
V01	コイルアセンブリ	coil assembly	--	1 0JDSP7017
V02	ダイヤフラムアセンブリ	diaphragm assembly	NBR	1 0JDSPE003
V03	バルブボディ	valve body	cast bronze	1 0JDSP6001
V04	パイロットスプリング	pilot spring	stainless steel	1 0JDSPE005
V05	プランジャ	plunger	stainless steel	1 0JDSP4019
V06	プランジャスプリング	plunger spring	stainless steel	1 0JDSP4021
V07	バルブボンネット	valve bonnet	copper-alloy	1 0JDSP4020
V08	ハンドル	handle	carbon resin	1 0JDSP5010
V09	ターミナルボックス	terminal box	-	1 0JDSP7022
V21	ダイヤフラムアセンブリ	diaphragm assembly	-	1 RU1502003
V22	ディスク	disk	viton	1 RU1502004
V23	Oリング	O ring	NBR	1 RU1502005
V24	Oリング	O ring	NBR	1 RU1502006
V25	Oリング	O ring	NBR	1 RU1502009
V26	ボディ	body	cast bronze	1 RU1502001
V27	圧力計	pressure gauge	copper-alloy	1 RU1502010
V28	ストレーナ	strainer	stainless steel	1 RU1502008

OUTLINE OF VALVES FOR AUTO. CONTROL DEVICE

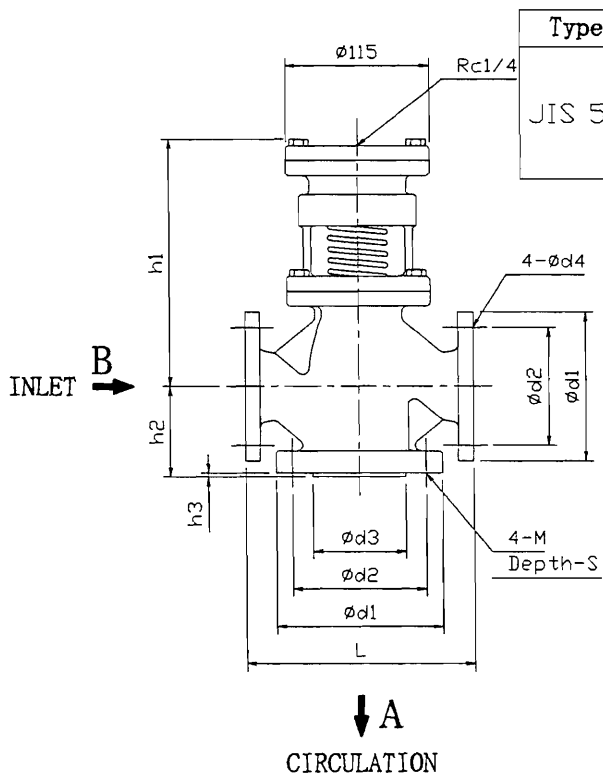
3-WAY SOLENOID VALVE (SV4)



- Ⓐ : OUTLET (TO FEED VALVE)
- Ⓟ : INLET
- Ⓡ : EXHAUST



FEED VALVE (CV1)



Type	Size	h1	h2	h3	d1	d2	d3	d4	L	M	S
JIS 5K	25A	204	66	6	95	75	59	12	152	M10	15
	40A	200	80	6	120	95	75	15	182	M12	20
	50A	200	85	6	130	105	85	15	216	M12	20

Air Supply ; B→C
Air Less ; B→A

Connection

Model	SJ10G,20G,30G	SJ50G,60G,70G	SJ100G,120G,150G
Bore	25A	40A	50A
Weight	9kg	16kg	24kg

Film No. _____ Date MAY. 12th. 96' _____ DRAWN H. TERASHIMA _____ DESIGNED S. HIRAHARA _____ CHECKED Y. TANAKA _____ MODEL SJ10G~SJ150G (5K)

This drawing and the design it covers are the property of MITSUBISHI KAKOKI KAISHA, LTD. They are hereby loaned and on the borrower's express agreement that they will not be reproduced, loaned, exhibited, nor used except in the limited way



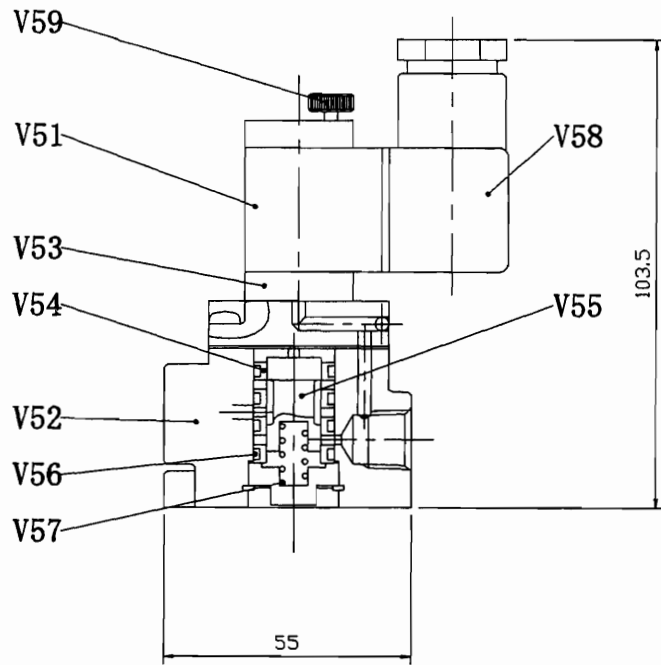
MITSUBISHI KAKOKI KAISHA, LTD.

DWG. NO.

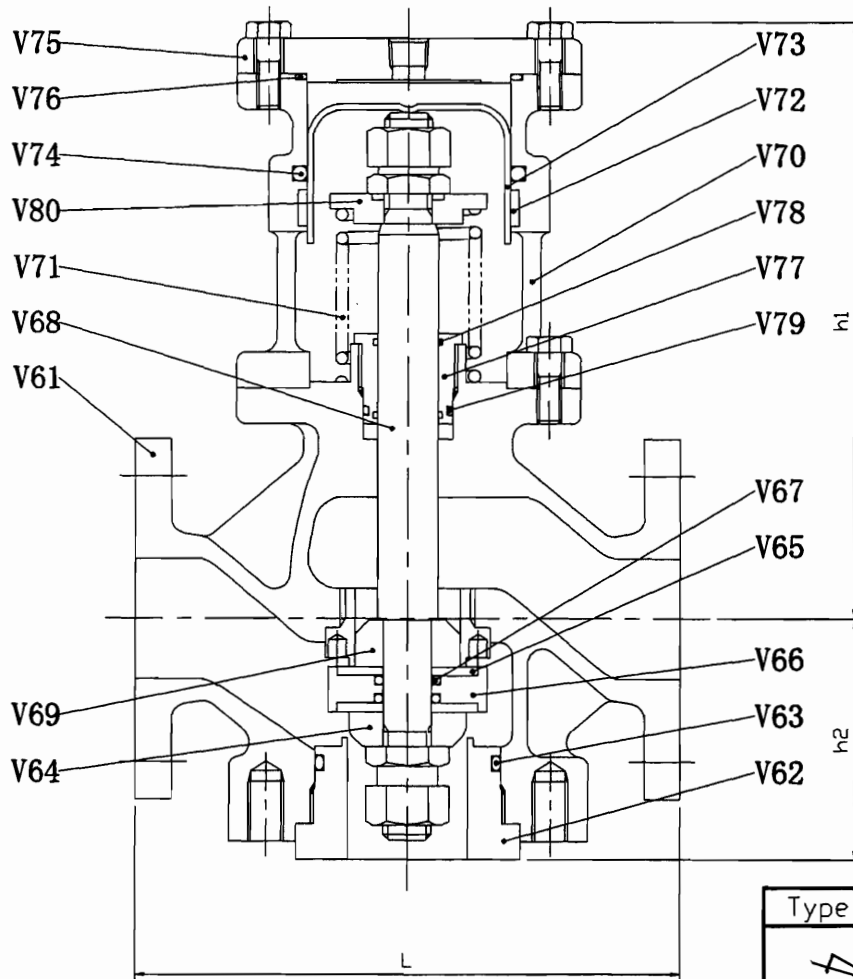
201342B

ASSEMBLY OF VALVES FOR AUTO. CONTROL DEVICE

3-WAY SOLENOID VALVE (SV4)



FEED VALVE (CV1)



Type	Size	h1	h2	L
JIS 5K	25A	204	66	152
	40A	200	80	182
	50A	200	85	216

Film No. _____ Date MAR. 12th. 96' _____ Drawn H. TERASHIMA _____ DESIGNED _____ CHECKED _____ MODEL S. KIMURA _____ SJJ10G~SJ150G

This drawing and the design it covers are the property of MITSUBISHI KAKOKI KAISHA, LTD. They are hereby loaned and on the borrower's express agreement that they will not be reproduced, loaned, exhibited, nor used except in the limited way

HF AP ABCD EFGH IJK...
 RL ABCD EFGH IJK...



MITSUBISHI KAKOKI KAISHA, LTD.

DWG. NO.

201441B

Symbol	Parts Name		Material	Q'ty	Parts No
V51	パイロット弁	pilot valve	-	1	PMS23001
V52	ボディ	body	aluminium alloy casting	1	PMS23003
V53	ベース	base	aluminium alloy casting	1	PMS23004
V54	スリーブ	sleeve	stainless steel	1	PMS23005
V55	スプール	spool	stainless steel	1	PMS23006
V56	Oリング	O ring	NBR	4	PMS23007
V57	スプリング	spring	stainless steel	1	PMS23008
V58	DINソケット	DIN socket	-	1	PMS23009
V59	ロッキングボタン	roking button	-	1	PMS23010
V61	ボディ	body	ductile iron	1	OSK8RT003
V62	バルブシート	valve sheet	copper-alloy	1	OSK8RT004
V63	Oリング	O ring	viton	1	OSK80R029
V64	ワッシャ	washer	copper-alloy	1	OSK80R041
V65	バルブディスク	valve disk	teflon	2	OSK80R031
V66	バルブ	valve	copper-alloy	1	OSK80R032
V67	Oリング	O ring	viton	2	OSK80R033
V68	ステム	stem	stainless steel	1	OSK80R034
V69	ワッシャ	washer	copper-alloy	1	OSK80R040
V70	シリンダ	cylinder	ductile iron	1	OSK8RD010
V71	スプリング	spring	spring steel	1	OSK8RD036
V72	ウェアリング	ware ring	resin	1	OSK8RD012
V73	ピストン	piston	structural steel	1	OSK8RD013
V74	Oリング	O ring	NBR	1	OSK8RD014
V75	シリンダカバ	cylinder cover	structural steel	1	OSK8RD015
V76	Oリング	O ring	NBR	1	OSK8RD017
V77	グランド	gland	copper-alloy	1	OSK80R037
V78	Oリング	O ring	viton	2	OSK80R038
V79	Oリング	O ring	viton	1	OSK80R039
V80	スプリングシート	spring seat	structural steel	1	OSK8RD042