

来 歴

- ・ SNO. 740の完成状態をベースに、その後の変更点を含めた最新図面 (SNO. 746) を流用した。但し塗装仕様及び電圧をAC220V⇒AC110Vに変更した。(2007年6月19日)
- ・ BATTERY BOXの図面を追加、およびP-5にBATTERY AIR PIPEを記載した。
(2007年12月25日)
- ・ 1/24日付造船所殿ご指示(FAX)により、一部変更した。(2008年1月28日)
- ・ 2/15日付打合せ結果で一部変更した。(2008年3月31日)
- ・ 4/1及び4/17日付貴FAXにて塗装色及び銘柄を変更した。(2008年4月23日)

工事番号 M6108/6109

SNO. 761/762

SASEBO HEAVY INDUSTRIES
CO., LTD.

EMERGENCY GENERATOR
MODULE

-SCHEMATIC PLAN-

(非常用発電機モジュール)
140kW (175kVA)

配布先

注文主	打合図	
	承認図	7
	工事図	5
	完成図	

ABS 5

マシナ 1

製造 1

検査 1

組立 4

大三 1

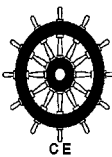
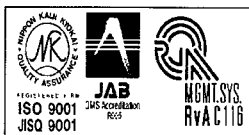
徳山

宮本

日冷

控 1

TAIKŌ SANGYO CO., LTD.



A.754(18)
DOOR &
PANEL
SYSTEM

DEVELOPMENT & BUSINESS DIVISION

DATE Jun. 19, 2007

DRAWN BY M. Inoue

CHECKED BY

CHIEF OF SEC

DWG. NO. DM00298-C

計 8

DELIVERY

SNO. 761 : JUN. 05, 2008
SNO. 762 : NOV. 18, 2008

15 SHEETS WITH COVER

SNO. 761/762

EMERGENCY GENERATOR MODULE
SPECIFICATION

ITEM	PARTICULARS	QUANT	MAKER	REMARKS
1	MODULE BOX Material : SS400, Plate : t6.0 F.O. Tank : 1.0 m ³ with manhole F.O. supply: by G/E D.O. serv. Pump Float type level gauge (with LLA) Emerg. shut-off valve	1set	Taiko Sangyo	Taiko sangyo
2	GENERATOR SET Engine : Mitsui-Cummins 6CTA8.3D Electric starter (Battery) Gene. : NISHISHIBA NTAKL-VEK 140kW (175kVA) 1800min ⁻¹ AC450V 3 φ 60Hz • Exhaust gas silencer • Expansion joint	1set	Mitsui Zosen Machinery & Service	Shipyard
3	EMERG. SWITCHBOARD Stand type (Including Battery charger) L2000 x D600 x H2000 mm	1set	JRCS	Shipyard
4	BATTERY GMX-210H52, DC24V, 160Ah	2sets	GS YUASA	Shipyard
5	TRANSFORMER AC450V/115V, 1 φ, 10kVA x 3 (1-piece type), W840 x D380 x H430	1set		Shipyard
6	AUTO. TELEPHONE Wall type	1set		Shipyard
7	BELL For tel call, 120 φ, 24V	1	Sanshin Elect.	Taiko sangyo
8	EXHAUST FAN AC440V, 3 φ, 0.75kW, EF-50FTB	1	Mitsubishi	
9	STARTER For EXHAUST FAN	1	Terasaki Elect.	
10	EMERG. STOP SWITCH FOR EXHAUST FAN, WITH BOX	1set		
11	LIGHT AC110V 20W x 2, With guard	2	Sanshin Elect.	
12	EMERG. LIGHT AC110V 20W x 2, With guard	1		
13	SWITCH For light, 10A, Type-1M	2	Senpaku Shoji	
14	RECEPTACLE With switch, 250V/110V-10A, SI-RM	1		
15	BELL For general alarm, 120 φ, AC110V	1	Sanshin Elect.	
16	STARTER For No. 2 E/R Supply Fan	1		
17	FIRE DETECTOR	1		
18	PUSH BUTTON For Fire Detector	1		
19	JUNCTION BOX	1		Taiko sangyo
20	INSULATION MAT For ESB Front, 2000x1000, 6t	1		
21	EXTINGUISHER 6.8kg, CO ₂ Type	1set		Shipyard
22	BATTERY BOX	2set		Taiko sangyo
23	CABLE JIS, FA Type	1set		
24	PIPE & VALVE	1set		

SNO.761/762

SPECIFICATION OF PIPING SYSTEM

	System	Design		Pipe			Joint			Valve or Cock			Shop Test Press. MPa	Gasket	Bolt & Nut	Insu lation
		Press. MPa	Temp ℃	Nom. Dia.	Material	Trea t ment	Nom. Dia	Name	Material	Nom. Dia	Nom. Press.	Material				
1	D. O. Service Line (Pump Suc. &Open end)	0.3	50	15~ 40 Sch 40	STPG370	—	15~ 40	JIS SOP 5K	SS	15 ~ 40	5K	BC	0.45	Non Asbestos Joint Sheet	SS400 (Znメッキ)	—
2	D. O. Transfer Line (Pump Del.)	1.1	50	25 Sch40-S	AB Rule (ABS Gr. 2)	—	25	JIS SOP 16K	SS	25	16K	BC	1.65	Non Asbestos Joint Sheet	SS400 (Znメッキ)	—
3	Air Vent & Overflow	0.1	50	50	SGP-E	—	50	JIS SOP 5K	SS	15 ~ 50	5K	FC	—	Non Asbestos Joint Sheet	SS400 (Znメッキ)	—
4	Drain (Exh. Gas Pipe)	0.1	50	25	SGP-E	—	25	JIS SOP 5K	SS	25	5K	BC	—	Non Asbestos Joint Sheet	SS400 (Znメッキ)	—
5	Emerg. G/E Exh. Gas	0.1	460	125	SGP-E	—	125	JIS SOP 5K	SS	—	—	—	—	Non Asbestos Joint Sheet	SS400	Rock Wool with AIGC

SNO. 761/762

PAINTING SPECIFICATION

(CHUGOKU MARINE PAINTS LTD.,)

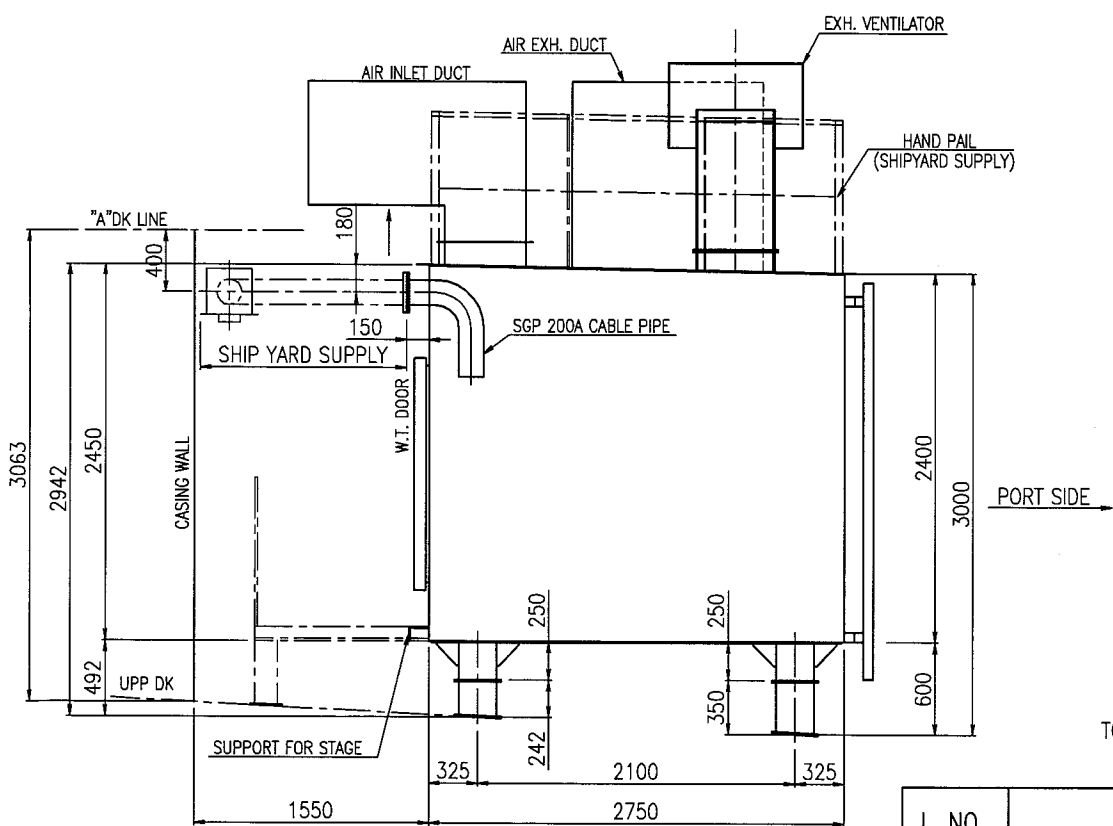
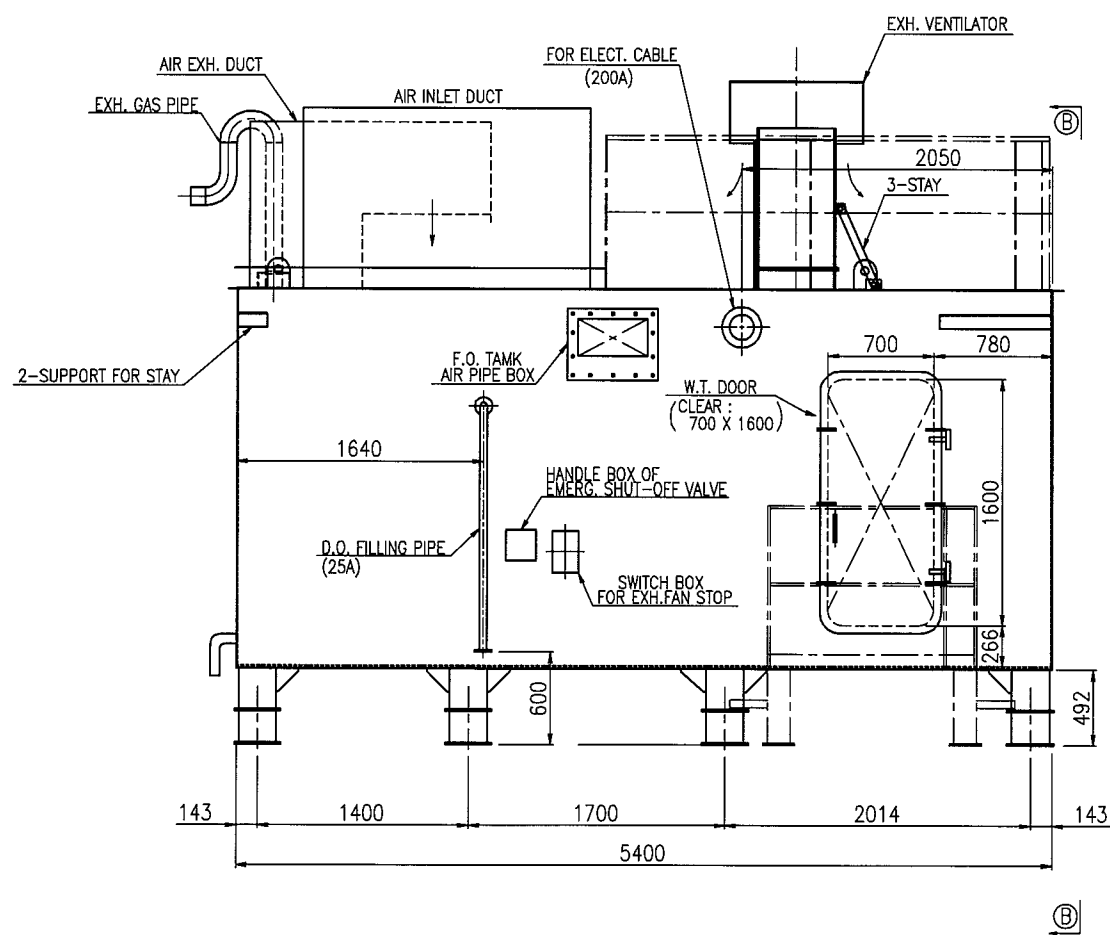
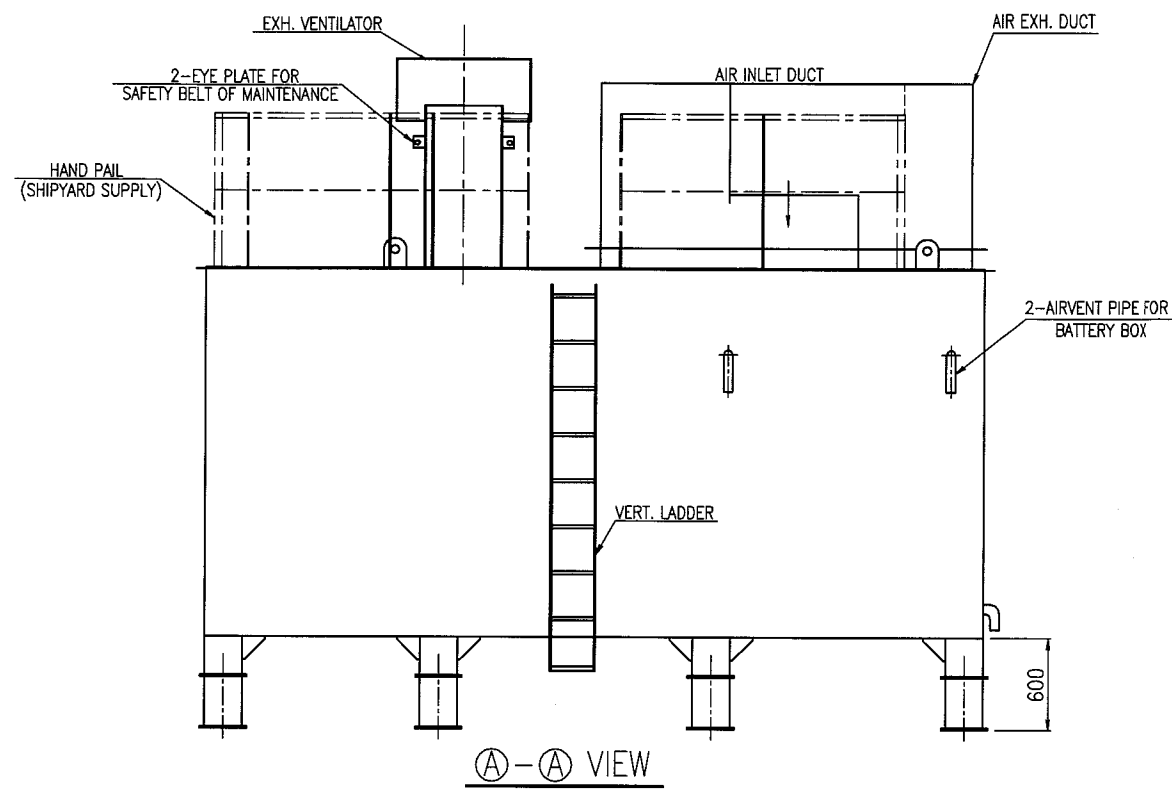
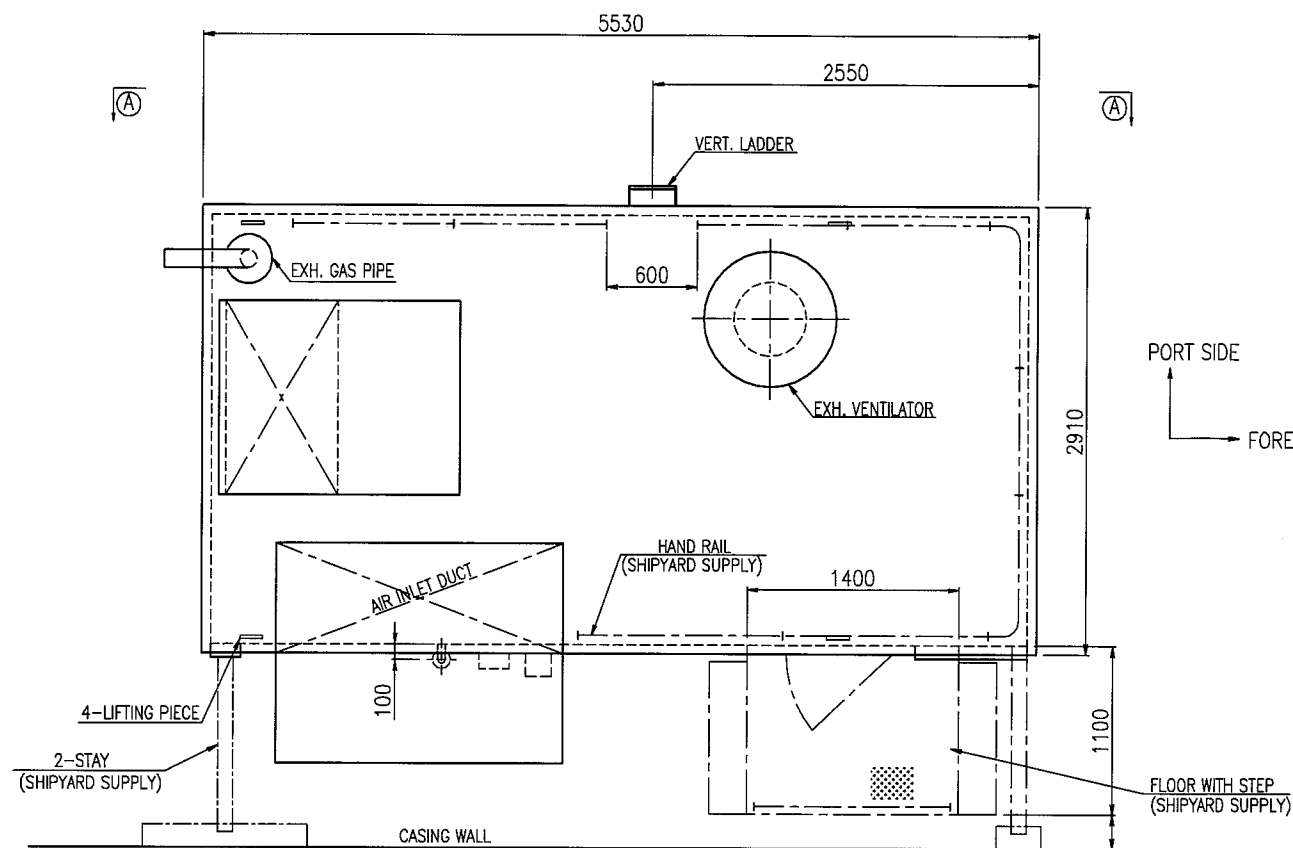
I t e m		Process	Paint	Dry Film Thickness (μm)	Painting Method	Finish Color	Remarks	
Module Outside	Ceiling, Bottom & Wall	Surface Preparation	Shot Blast & Zinc Primer / SIS Sa 2.5					
		1 st Coat	M/E	110	Spray			
		2 nd Coat	M/E	110	Spray	White N9.5		
Module Inside	Ceiling, Wall & Bottom	Surface Preparation	Shot Blast & Zinc Primer / SIS Sa 2.5					
		1 st Coat	R/P(W) (HB)	70	Spray	Pale White 2.5PB9/1		
		2 st Coat	F/P	30				
	Oil pan	1 st Coat	R/P(W) (HB)	70	Spray	Green 10GY4/7		
		2 st Coat	F/P	30	Brush			
	Floor (Checker plate)	1 st Coat	R/P(W) (HB)	70	Spray	Green 10GY4/7		
		2 st Coat	F/P	30				
	Duct & Ventilator (In. & Outside)		1 st Coat	M/E	110	Spray		
2 st Coat			M/E	110	Spray	White N9.5		
Hand Rail		1 st Coat	M/P(Pipe : Galvanized Pipe)					
		2 st Coat	M/E	110	Spray	White N9.5		
Vertical Ladder		1 st Coat	M/E	110	Spray			
		2 st Coat	M/E	110	Spray	White N9.5		
Exhaust Gas Pipe		1 st Coat	Heat Resist. Silver Paint	50	Spray	Silver		
Tank Inside		1 st Coat	S/P(TU)15	15				

M/E : Modified Epoxy Paint(BISCON HB-NT L)

R/P(W) (HB) : Rust Preventive Primer(ROSWAN QD-HB)

F/P : Finish Paint(EVAMARINE)

M/P : METAL PRIMER



TOTAL WEIGHT : APT 12000kg (at dry)

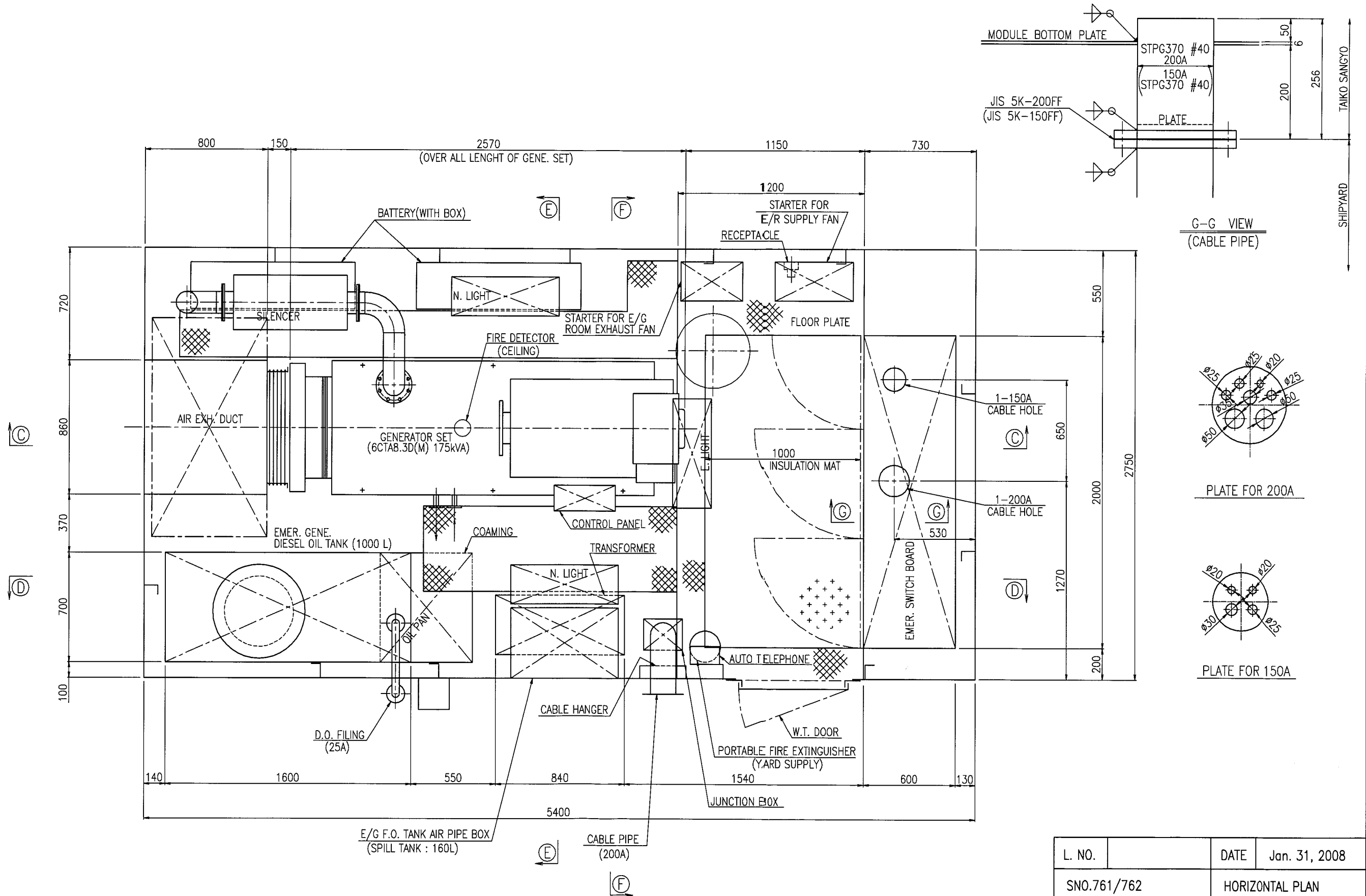
(A)-(A) VIEW

(B)-(B) VIEW

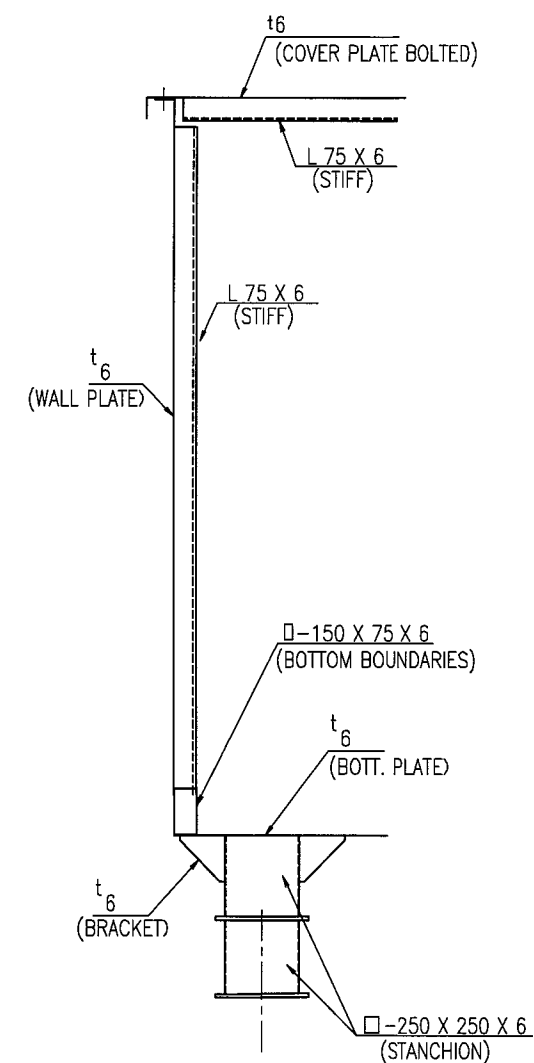
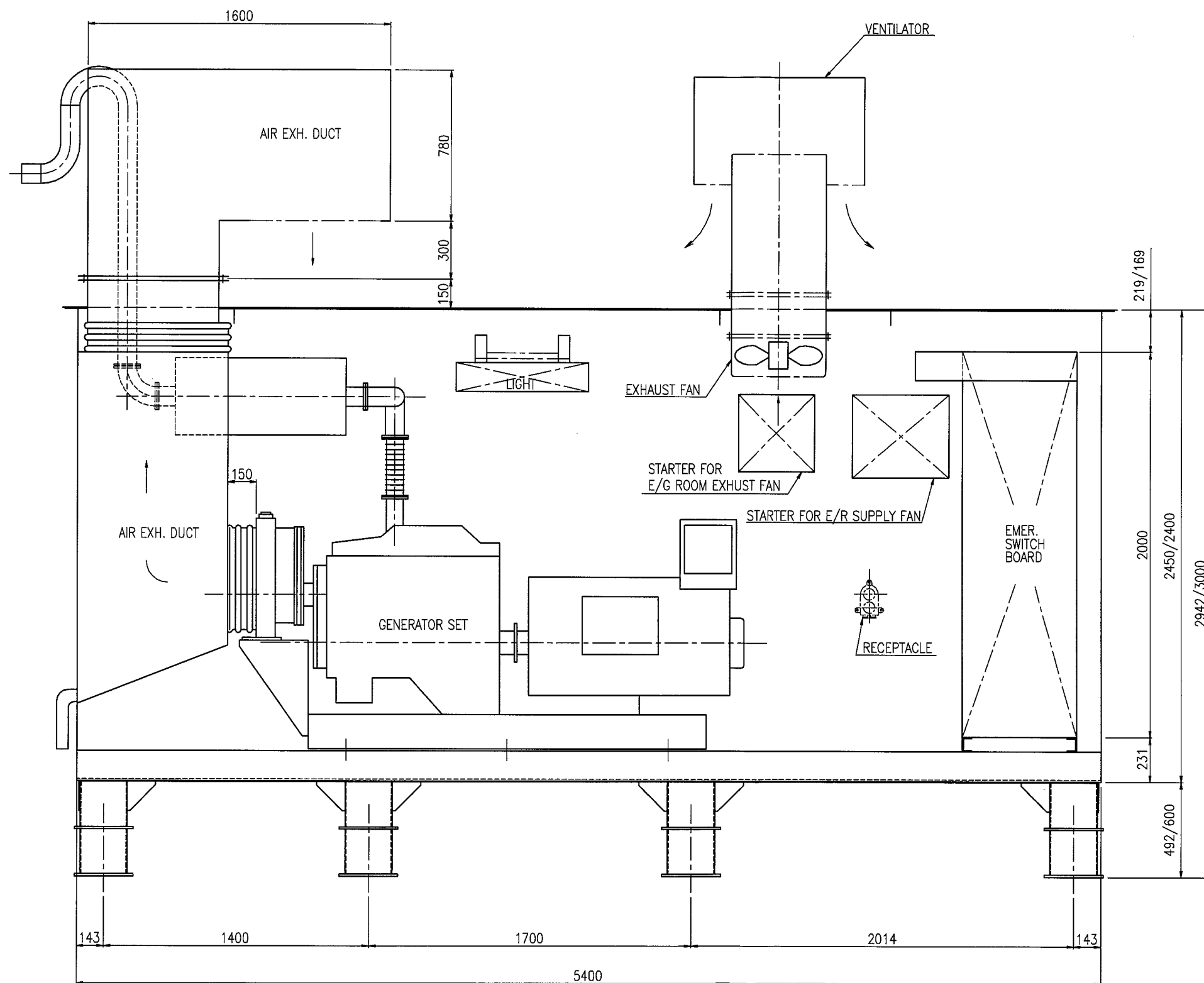
51.2
1000

DECK CAMBER

L. NO.		DATE	Apr. 23, 2008
SNO.761/762		OUTLINE PLAN	
TAIKO SANGYO CO.,LTD.		D.W.G. BY	
DEVELOPMENT & BUSINESS DIVISION		CHECKED BY	
		CHIEF OF SEC.	
SCALE	1/50	SHEET NO.	P - 1

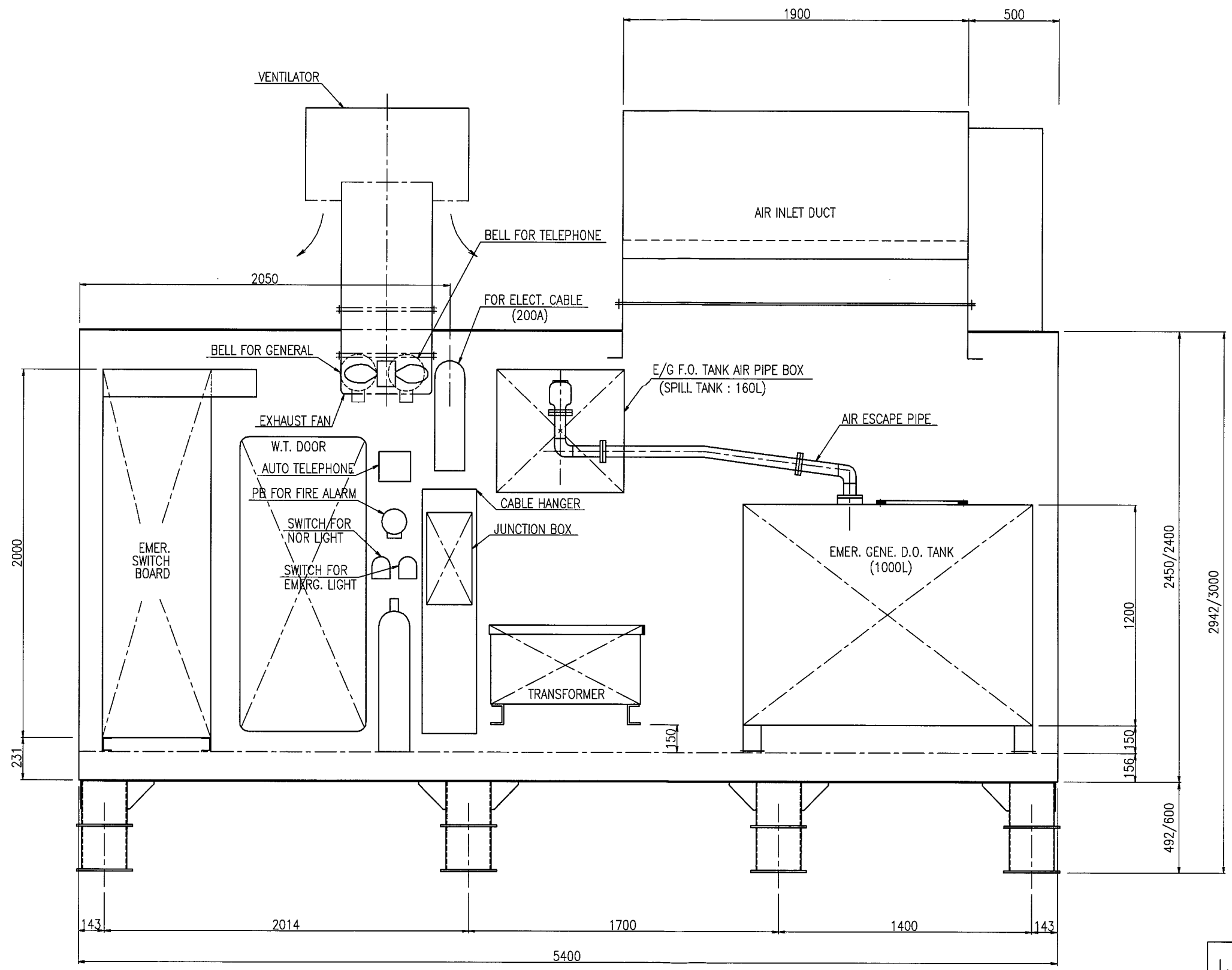


L. NO.		DATE	Jan. 31, 2008
SNO.761/762		HORIZONTAL PLAN	
TAIKO SANGYO CO.,LTD. DEVELOPMENT & BUSINESS DIVISION		D.W.G. BY M.INOUE CHECKED BY CHIEF OF SEC.	
SCALE	1/25	SHEET NO.	P - 2



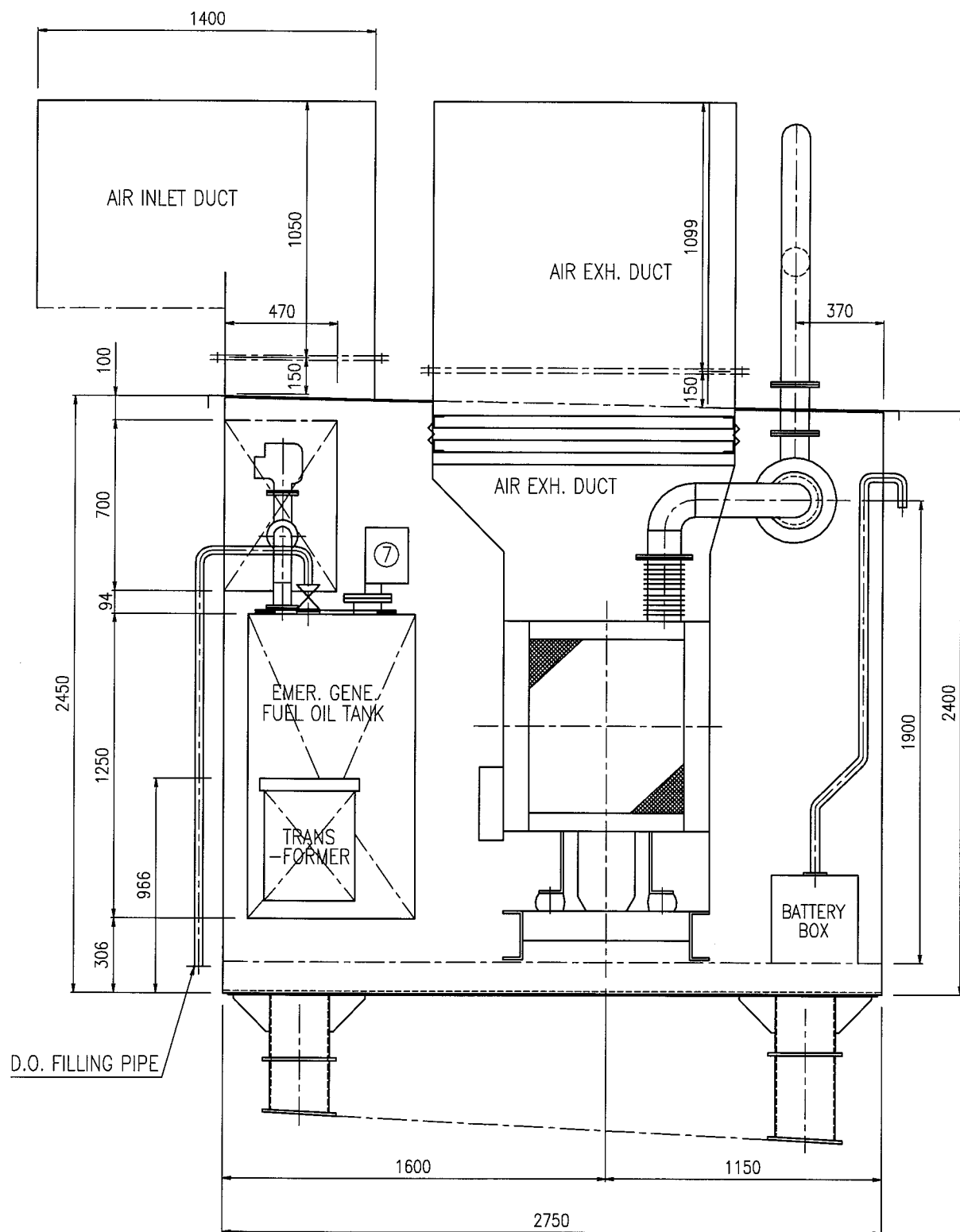
C - C VIEW

L. NO.		DATE	Mar. 31, 2008
S. NO. 761/762		LONG SECTION ①	
TAIKO SANGYO CO.,LTD.		D.W.G. BY	M.INOUE
DEPARTMENT & BUSINESS DIVISION		CHECKED BY	CHIEF OF SEC.
SCALE	1/25	SHEET NO.	P - 3

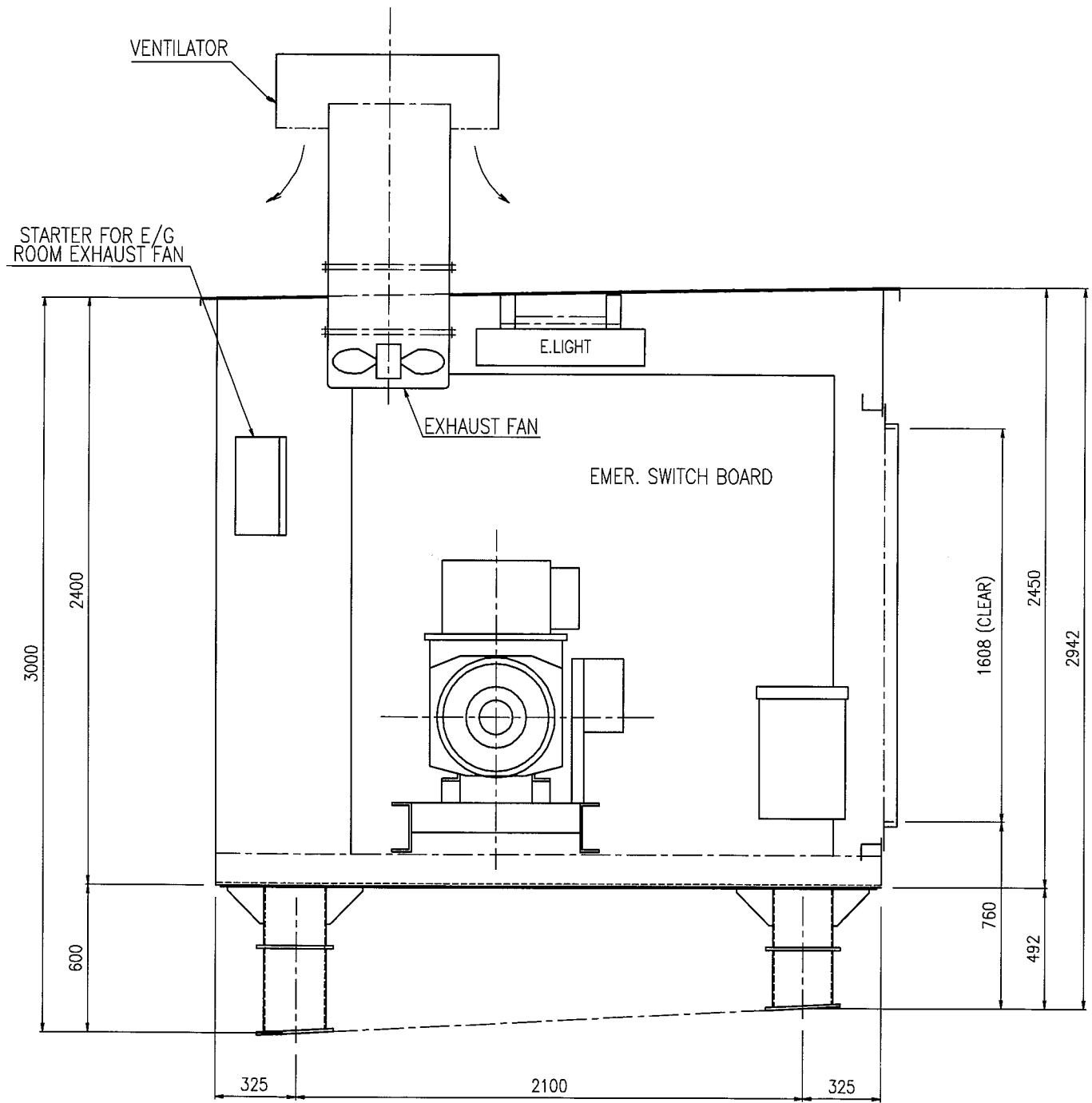


D - D VIEW

L. NO.		DATE	Mar. 31, 2008
S. NO. 761/762		LONG SECTION ②	
TAIKO SANGYO CO.,LTD.		D.W.G. BY M.INOUE	
DEVELOPMENT & BUSINESS DIVISION		CHECKED BY CHIEF OF SEC.	
SCALE	1/25	SHEET NO.	P - 4

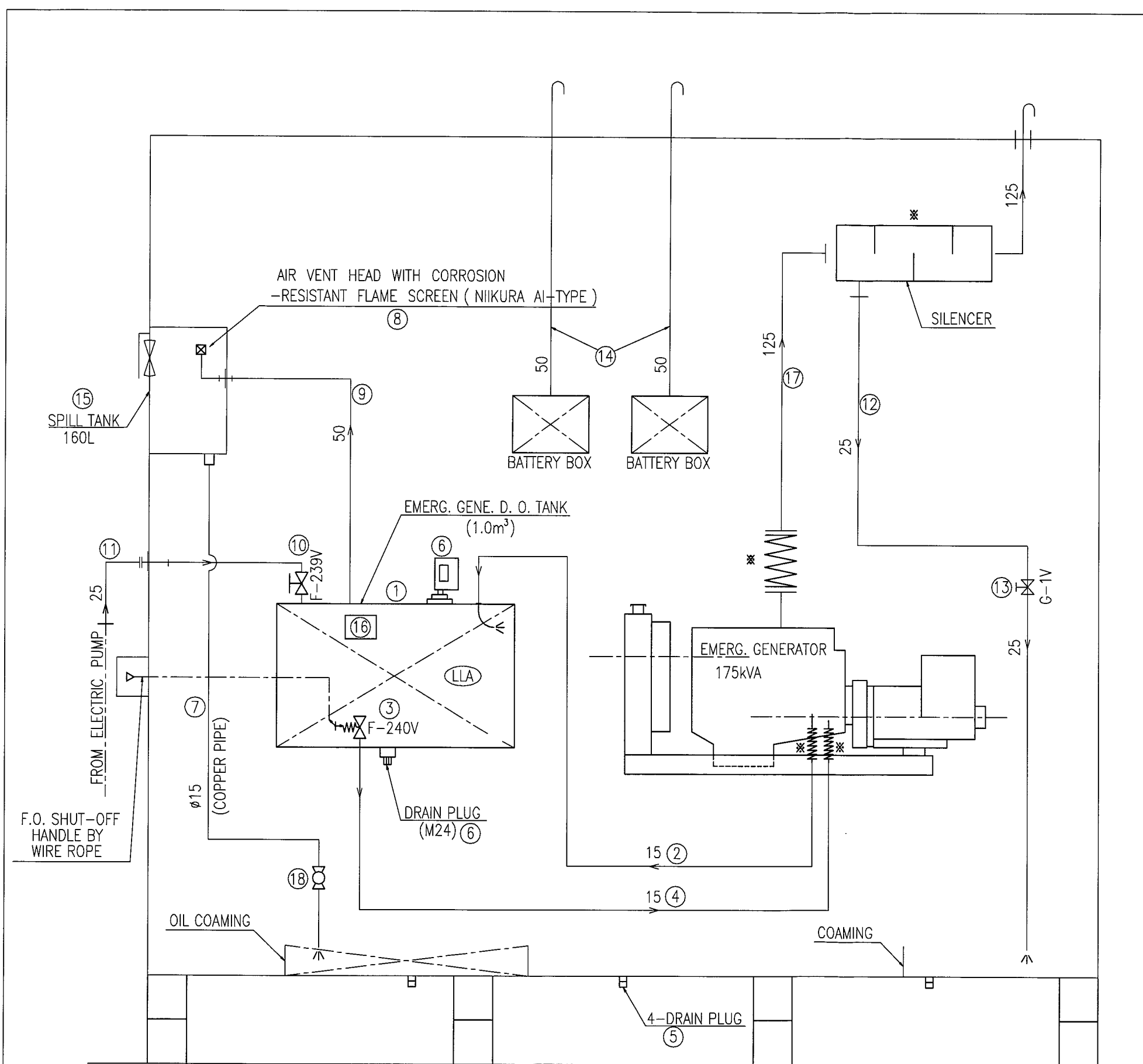


E - E VIEW



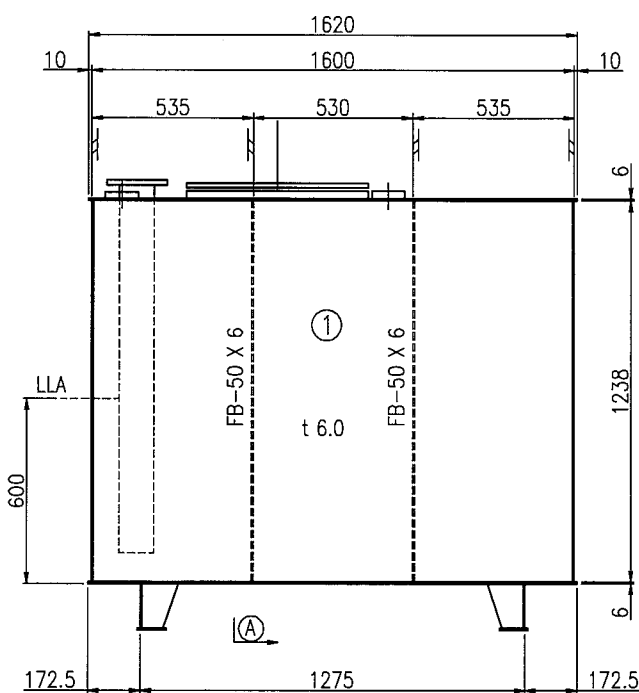
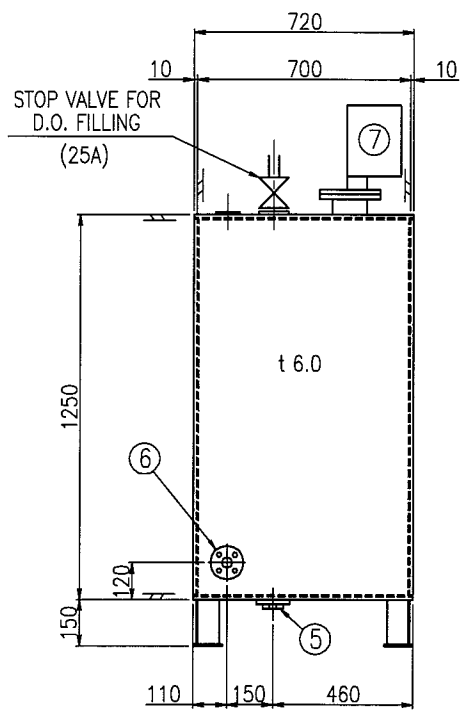
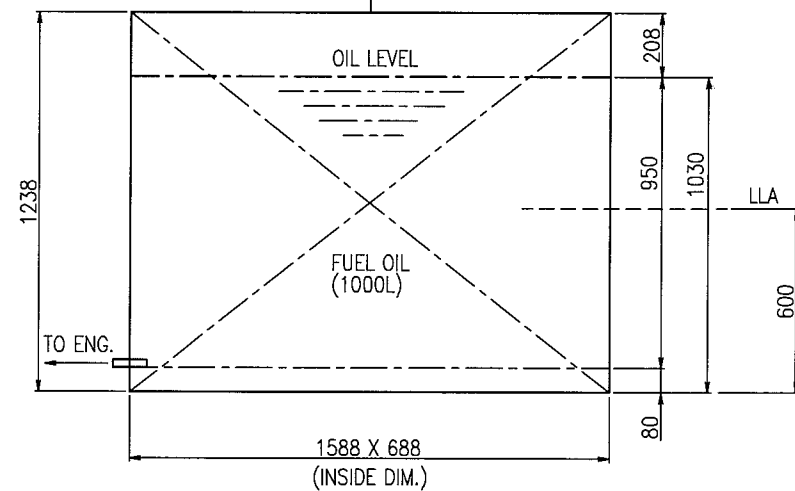
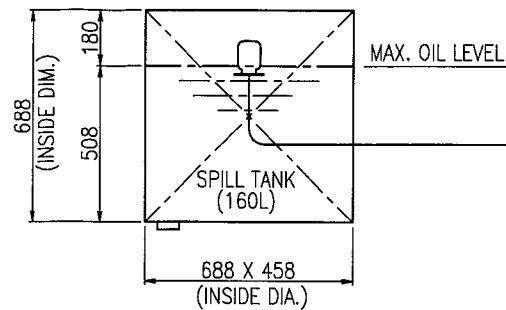
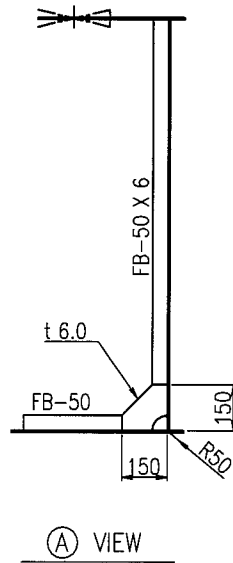
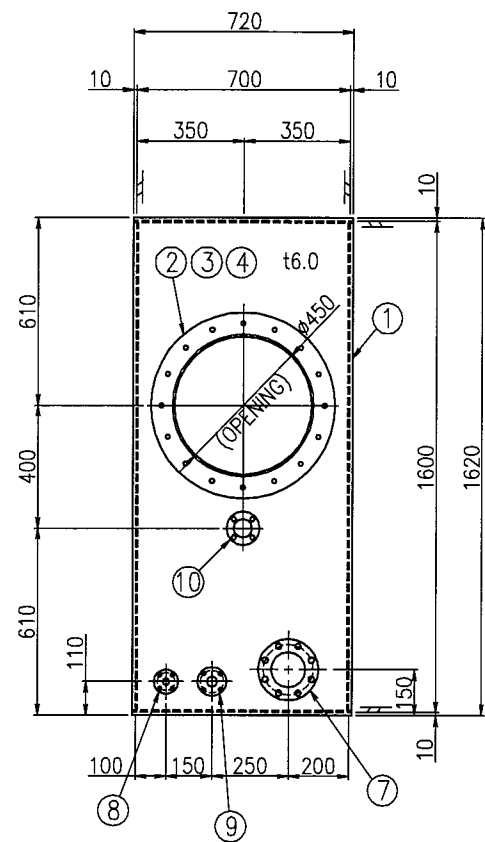
51.2
1000
F - F VIEW

L. NO.		DATE	Dec. 25, 2007
S.NO.761/762		HORIZONTAL SECTION	
TAIKO SANGYO CO.,LTD.		D.W.G. BY	
DEVELOPMENT & BUSINESS DIVISION		CHECKED BY	
		CHIEF OF SEC.	
SCALE	1/25	SHEET NO.	P - 5



NO.	DESCRIPTION	MAT'L	QUANT	W(kg)	REMARKS
1	F.O.TANK	SS400	1		1000 Liter
2	F.O.RETURN PIPE	STPG370E sch40	1		JIS 5K-15AFF
3	F.O.SUPPLY EMRG. SHUT-OFF VALVE	FCD	1		JIS F 7399 5K-25A
4	F.O.SUPPLY PIPE	STPG370E sch40	1		JIS 5K-15AFF
5	DRAIN PLUG	SS	4		JIS F 3006-M24
6	LEVEL INDICATOR		1		FLOAT TYPE(100A) ABS APPROVED TYPE
7	DRAIN RECOVERY PIPE	CU	1		D.O.φ15
8	AIR PIPE HEAD	FC	1		JIS 5K-50A / FLOAT / 30M30#
9	AIR PIPE	SGP-E	1		JIS 5K-50AFF
10	F.O.FILLING VALVE	BC	1		JIS F 7303 16K-25A
11	F.O.FILLING PIPE	ABS Gr.2 sch40-S	1		25A (SHIPYARD SUPPLY)
12	DRAIN PIPE	SGP-E	1		25A
13	VALVE	BC	1		JIS F 7301 5K-25A
14	AIR VENT PIPE	SGP-E	2		50A
15	SPILL TANK	SS400	1		MIN.160 LITTER
16	CAUTION PLATE		1		REFER TO P-8
17	EXHAUST GAS PIPE	SGP-E	1		JIS 5K-125AFF
18	COCK	BC	1		PT1/2

L. NO.		DATE	dec. 05, 2006
SNO.761/762		PIPING SYSTEM	
TAIKO SANGYO CO.,LTD.		D.W.G. BY	
DEVELOPMENT & BUSINESS DIVISION		CHECKED BY	
		CHIEF OF SEC.	
SCALE		SHEET NO.	P - 6



注意 CAUTION

燃料給油方法
F.O.FILLING METHOD

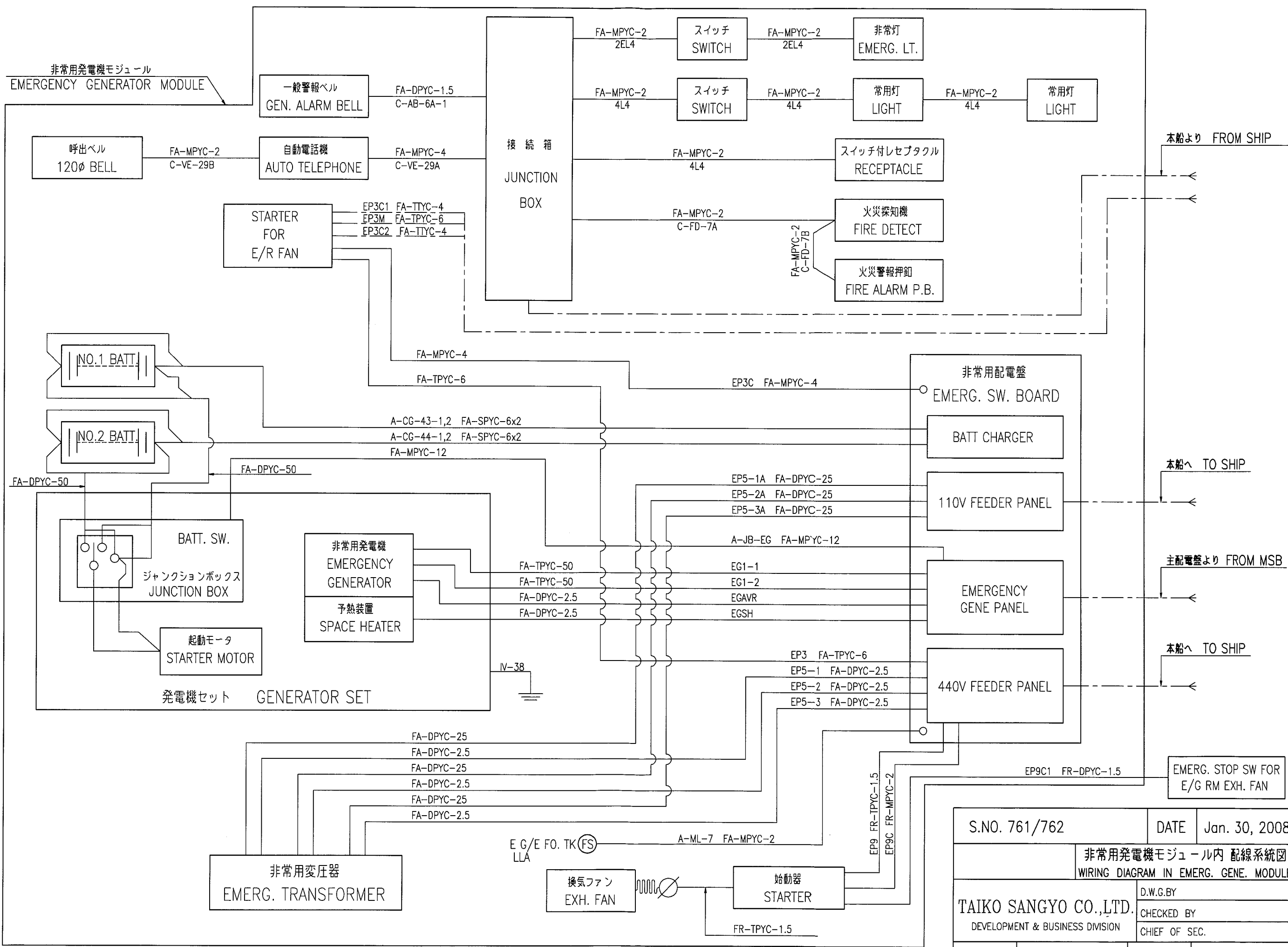
① 当該弁は、給油時以外は常時閉とし、給油時は必ず当該タンクの液位を乗務員が確認しながら行うこと。
THIS VALVE SHOULD BE SHUT ALWAYS EXCEPT F.O.FILLING. THE F.O.LEVEL OF THIS TANK SHOULD BE CONFIRMED BY THE CREW DURING F.O.FILLING.

② 液面計で確認しながら1000リットルレベルまで給油してください。
THE TANK SHALL BE FILLED UP TO 1000 LITER LEVEL OBSERVING THE LEVEL GAUGE.

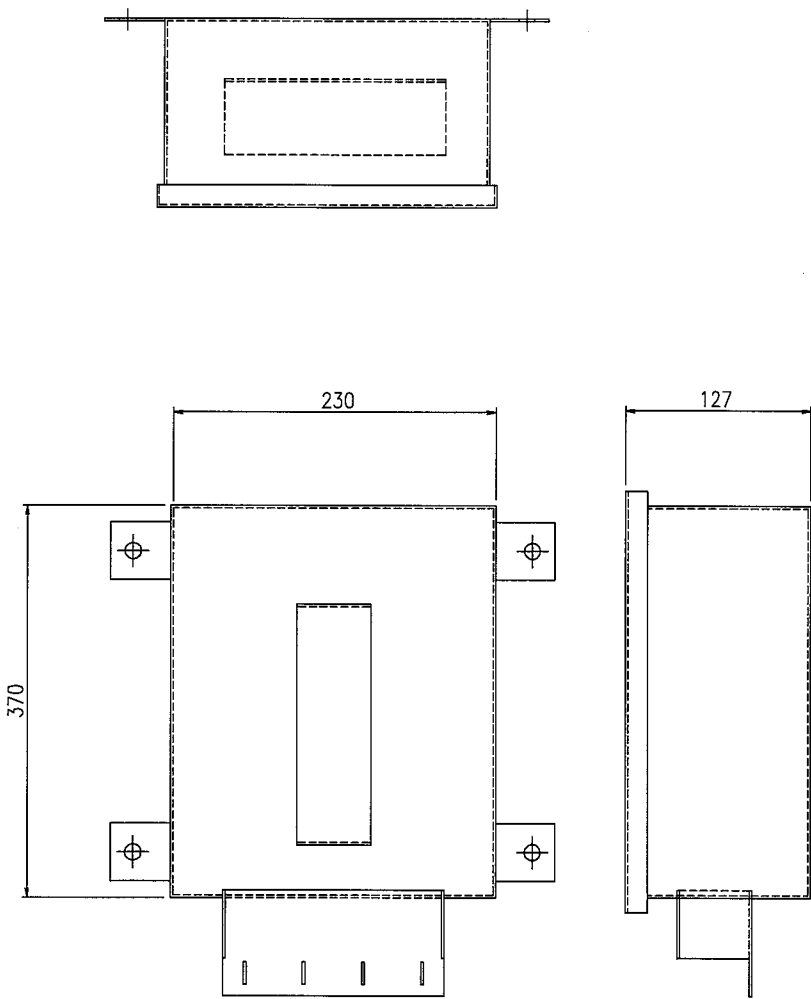
10	AIR EXHAUST PIPE	1	SGP	50A	
9	FUEL OIL FILLING PIPE	1	AB Rule sch. 40-S	25A	
8	FUEL OIL RETURN PIPE	1	SGP	15A	
7	FLOAT TYPE LEVEL INDICATOR	1	SGP	100A	SEMCO
6	EMERGENCY SHUT-OFF VALVE	1	BIC6	JISF7399 5K-25A	
5	DRAIN PLUG	1	SS	M24	
4	MAN HOLE (GASKET)	1	JOINT SHEET	t 1.5	T/#1995
3	MAN HOLE (COVER)	1	SS400	φ600x10	M16BOLT
2	MAN HOLE (LINER)	1	SS400	t14.0	φ440 HOLE
1	BODY	1	SS400	t6.0	
NO.	PART. NAME	Q'Y	MTL.	SIZE	NOTE

L. NO.	DATE	AUG. 31, 2006
S. NO.761/762		FUEL OIL TANK
TAIKO SANGYO CO.,LTD.		D.W.G. BY
DEVELOPMENT & BUSINESS DIVISION		CHECKED BY
		CHIEF OF SEC.
SCALE	1/25	SHEET NO. P-7

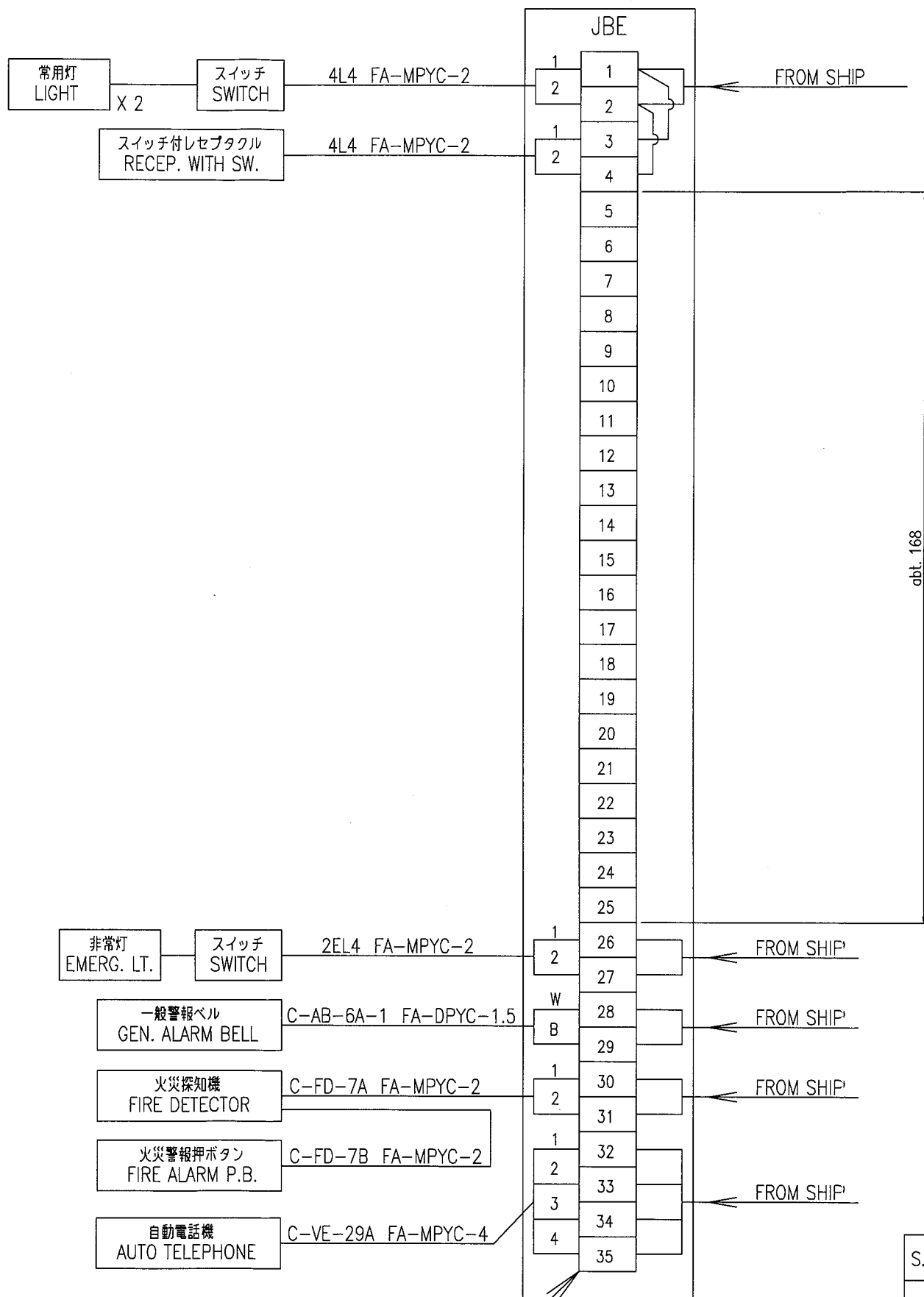
非常用発電機モジュール
EMERGENCY GENERATOR MODULE



S.NO. 761/762	DATE	Jan. 30, 2008
非常用発電機モジュール内 配線系統図 WIRING DIAGRAM IN EMER. GENE. MODULE		
TAIKO SANGYO CO., LTD. DEVELOPMENT & BUSINESS DIVISION		D.W.G.BY CHECKED BY CHIEF OF SEC.
SCALE	-	SHEET NO. P - 8



JUNCTION BOX

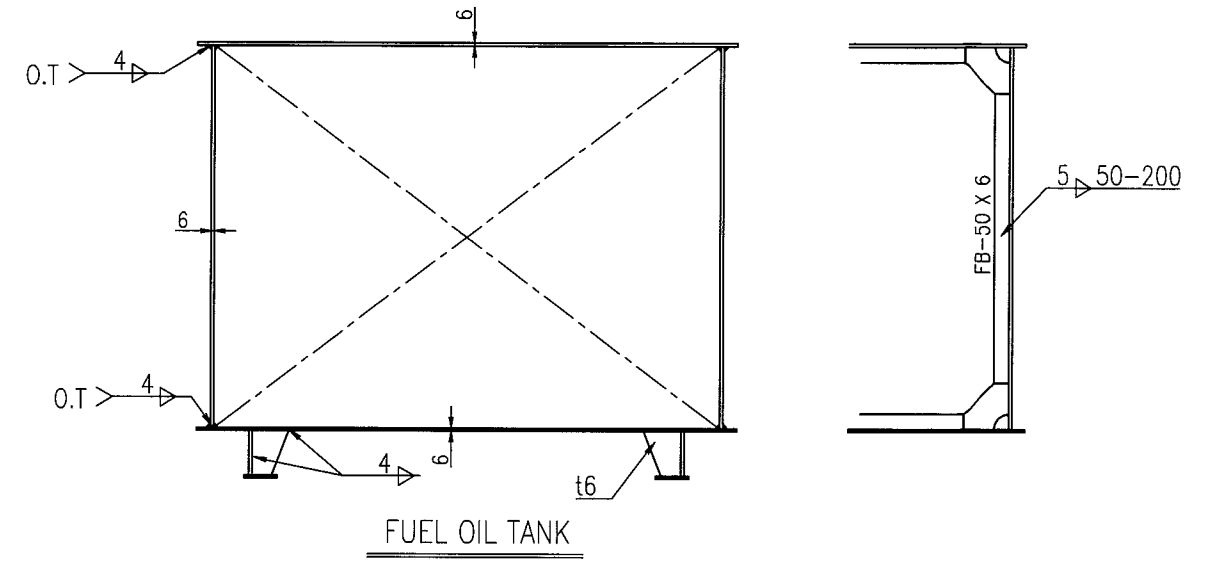
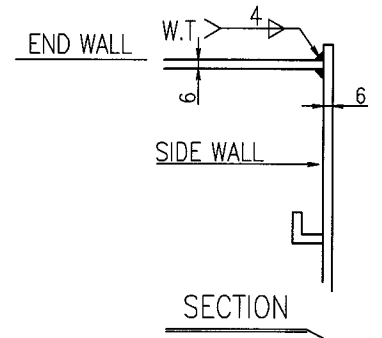
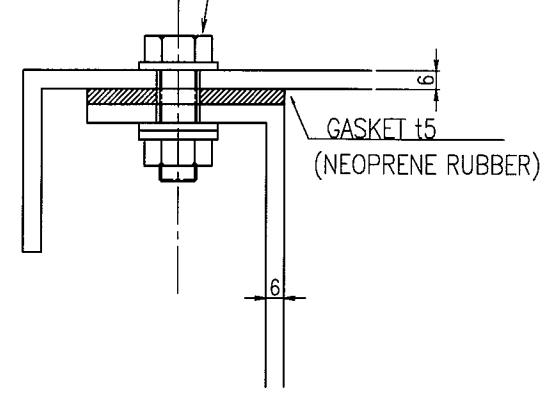


TERMINAL(SCREW UP TYPE)
TERMINAL NO.1~35(PTU)

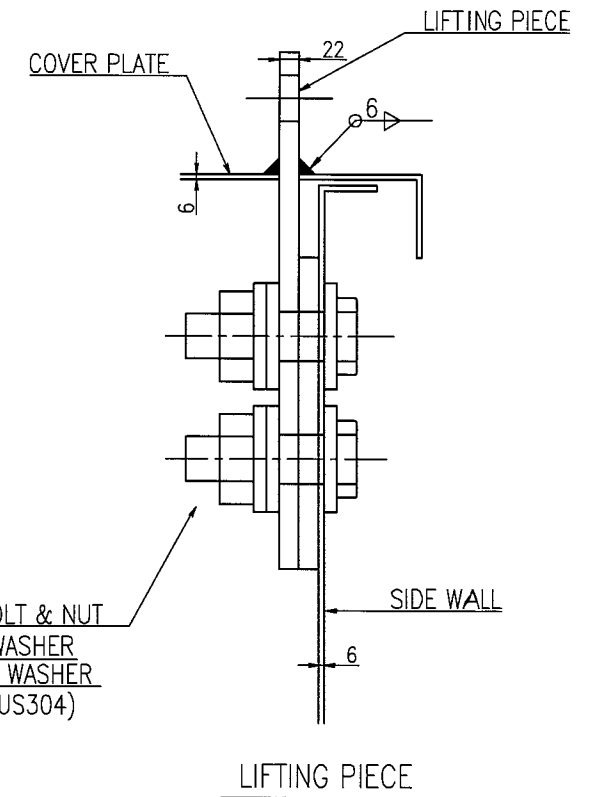
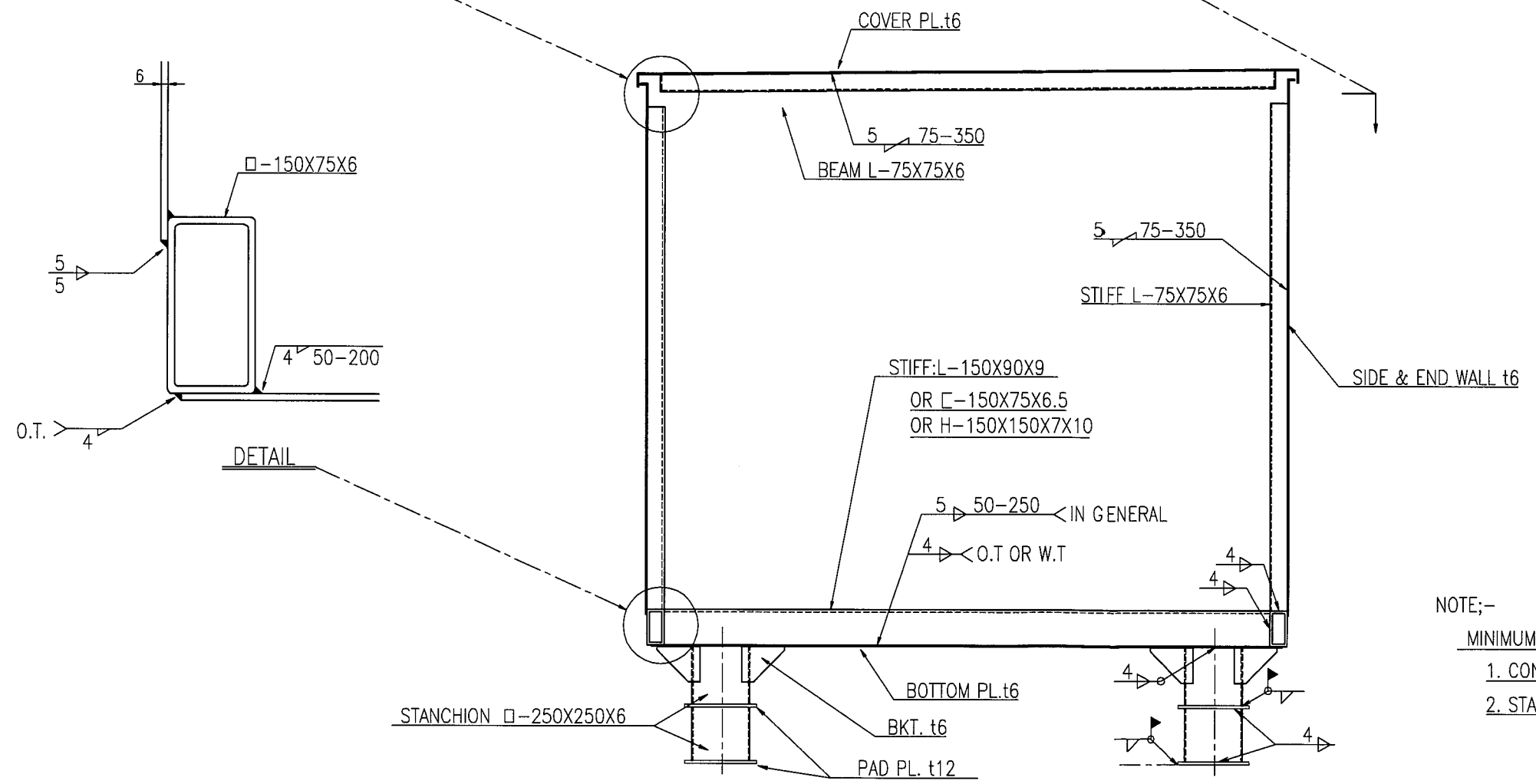
CONNECTION DIAGRAM

S. NO. 761/762	DATE	Feb. 18, 2008
CONNECTION DIAGRAM ON JUNCTION BOX.		
TAIKO SANGYO CO.,LTD. DEVELOPMENT & BUSINESS DIVISION	D.W.G. BY	
	CHECKED BY	CHIEF OF SEC.
SCALE	1/5	SHEET NO. P - 9

M12 BOLT & NUT
 2-PLAIN WASHER
 1-SPRING WASHER
 (MTL : SUS304)



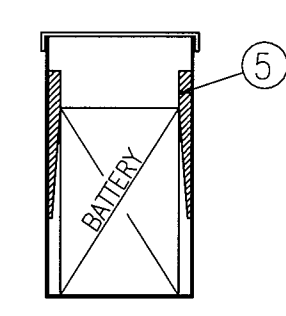
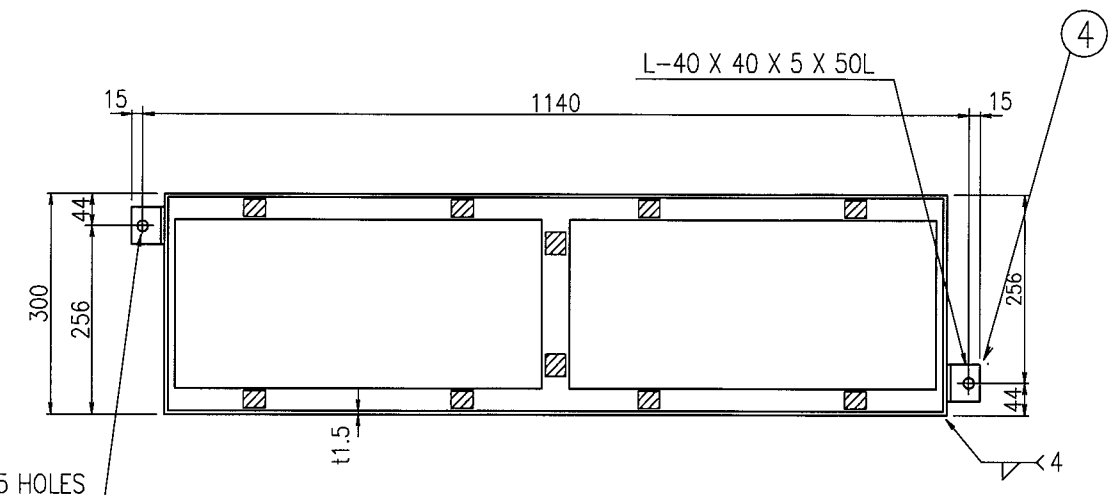
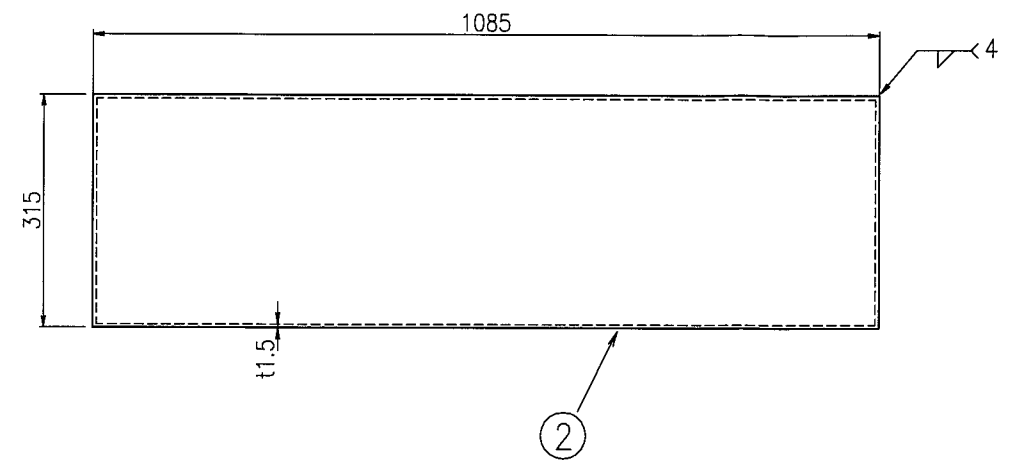
DETAIL



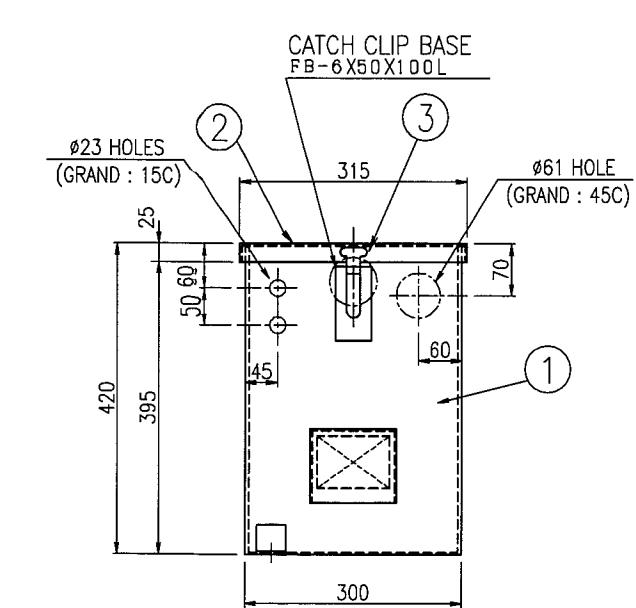
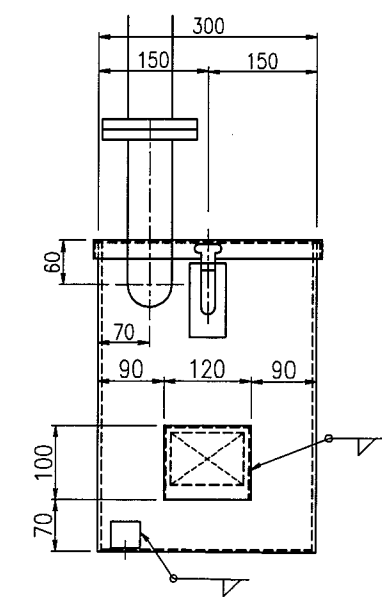
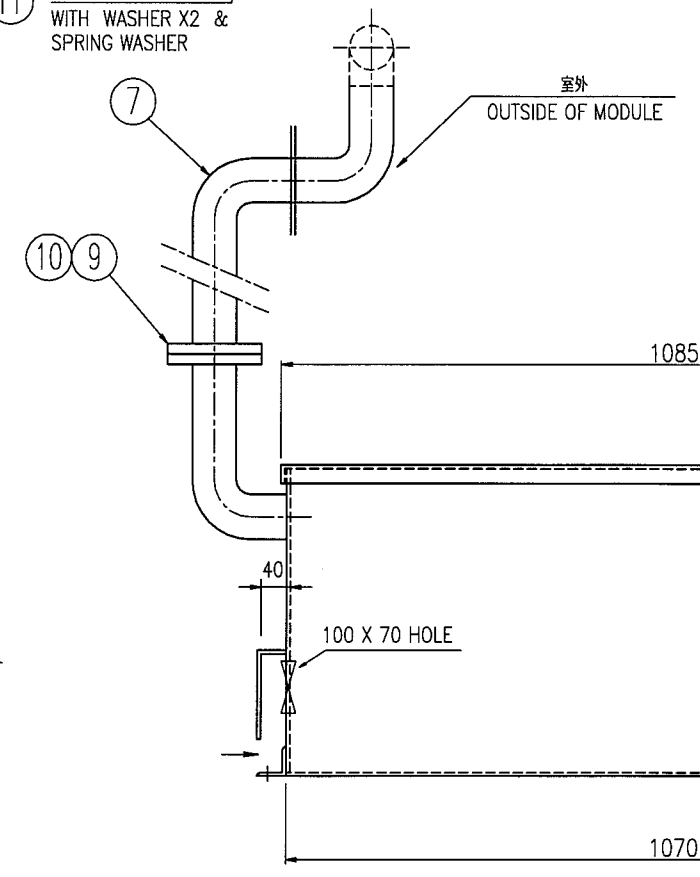
4-M22 BOLT & NUT
 2-PLAIN WASHER
 1-SPRING WASHER
 (MTL : SUS304)

NOTE;-
 MINIMUM LEG LENGTH ARE AS FOLLOWS.
 1. CONTINUOUS WELD 4
 2. STAGGERD WELD 5

L. NO.		DATE	JUN. 15, 2006
S.NO. 761/762		WELDING SCHEME	
TAIKO SANGYO CO.,LTD.		D.W.G. BY N.FUJIKI	
DEVELOPMENT & BUSINESS DIVISION		CHECKED BY	
		CHIEF OF SEC.	
SCALE	-	SHEET NO.	S - 9



⑪ 2-φ15 HOLES WITH WASHER X2 & SPRING WASHER



REMARKS

1) BATTERY SIZE 275 X 518 X 265^H
(GMX-210H52)

製作数：2ヶ

NO.	PART NAME	Q'Y	MTL	SIZE	NOTE
10	PACKING	1		5K-50A	T/#1995 t1.5
9	FLANGE	1	SS400	5K-50A	
7	AIR ESCAPE PIPE	1	SGP	50A	
6	BATTERY	2		DC12 ▽	GMX-21052
5	WOOD	10	WOOD		
4	PIECE	2	SS400	L50 x 6	
3	CATCH CLIP	2	SUS	C-1007-1	
2	COVER	1	SUS	t1.5	
1	CASE	1	SUS	t1.5	

L. NO.	DATE	Apr. 16, 2008
SNO.761/762		BATTERY BOX
TAIKO SANGYO CO.,LTD.		D.W.G. BY
DEVELOPMENT & BUSINESS DIVISION		CHECKED BY
		CHIEF OF SEC.
SCALE	1/10	SHEET NO. D-24